
Carrying Location Objects in RADIUS - GEOPRIV Discussion

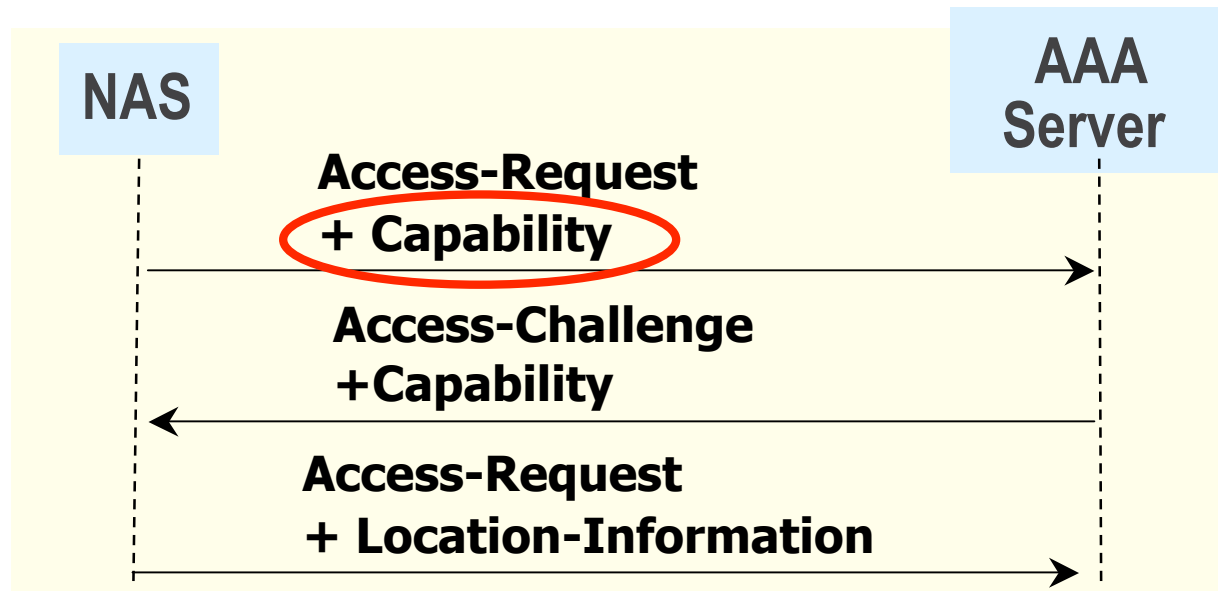
<draft-ietf-geopriv-radius-lo-04.txt>

Presentation written by:
Hannes Tschofenig, Allison Mankin

Draft Authors:
Hannes Tschofenig, F. Adrangi , A. Lior, M. Jones

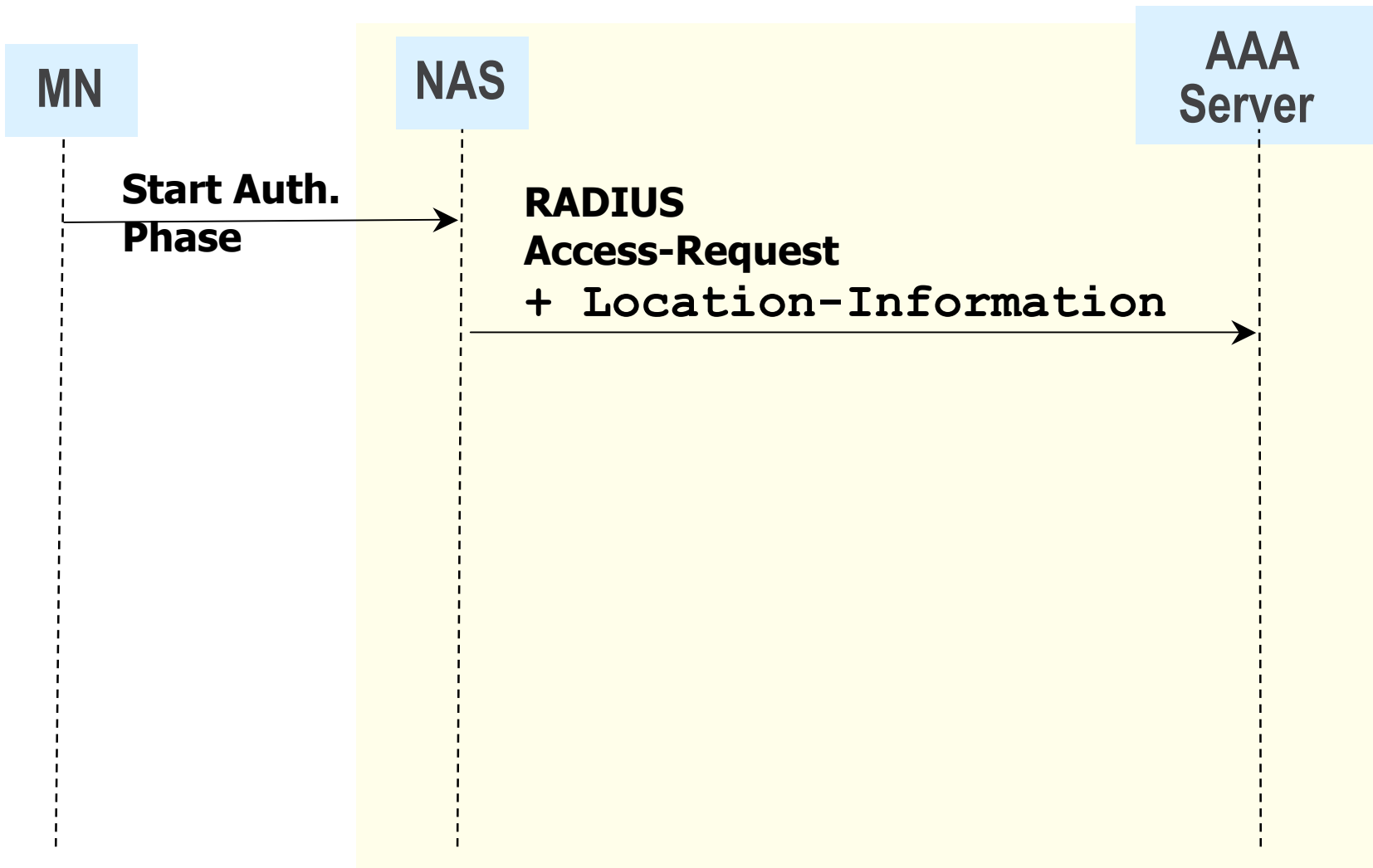
Current Status

- The recent draft update <draft-ietf-geopriv-radius-lo-04.txt> raised some discussions on the RADEXT mailing list because of the generic capability functionality.



- The GEOPRIV scenarios should not depend on Capability work (future) in the RADEXT working group.
- Suggested approach for dealing with the problem is outlined in the subsequent slides.

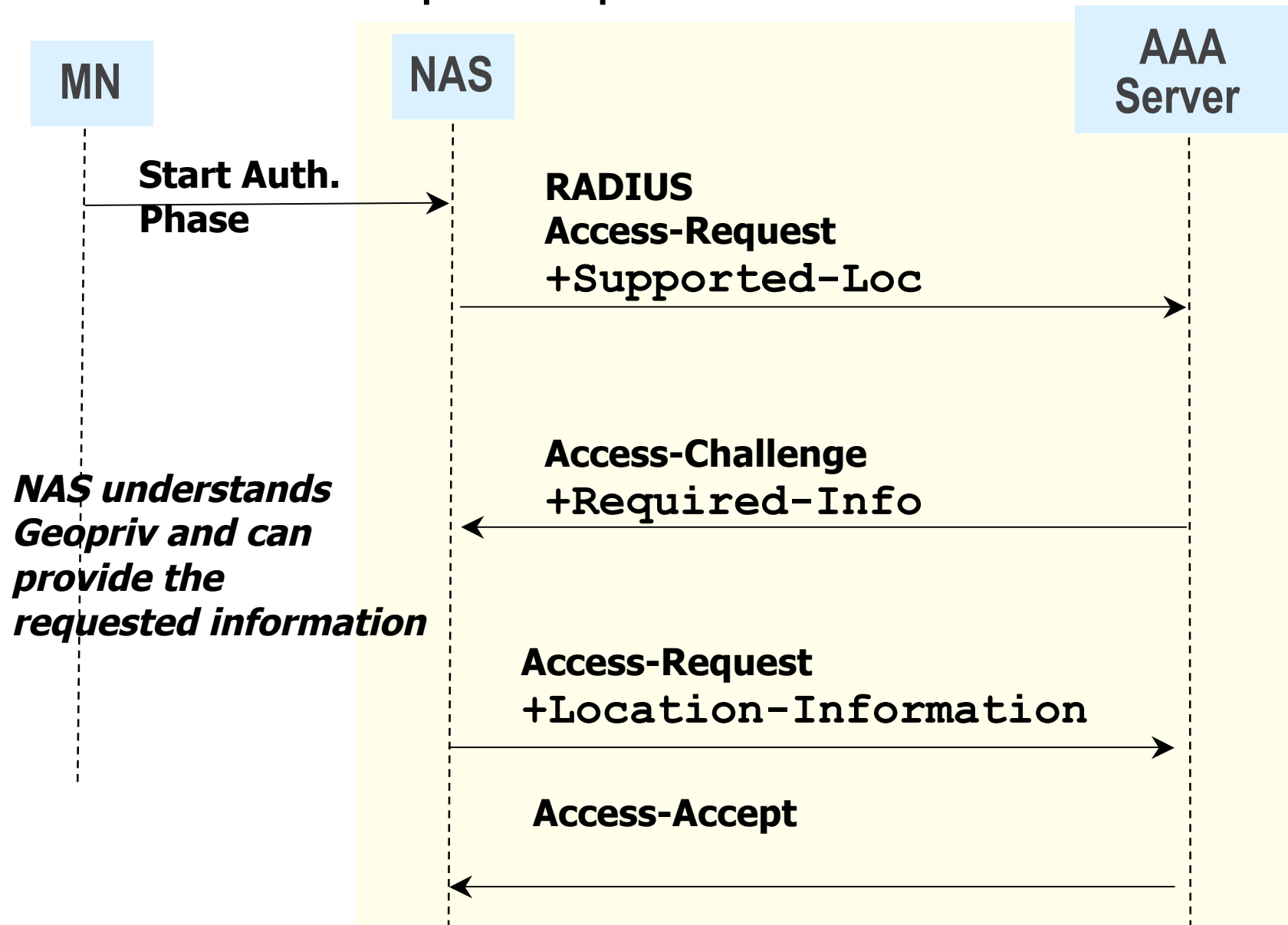
Static Scenario



NAS and AAA have a prior agreement on the transmission of location information

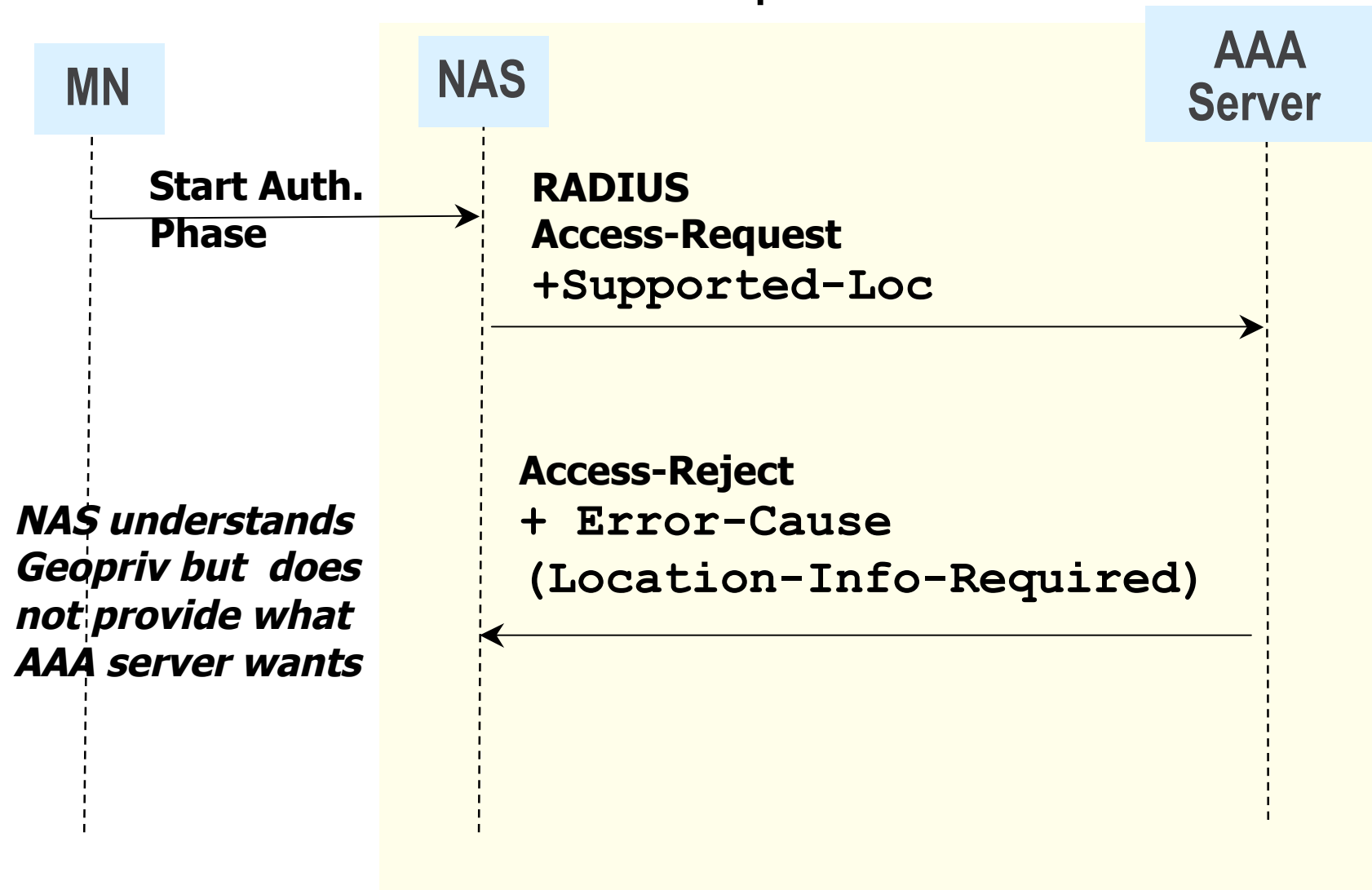
Dynamic Scenario for location-based authorization

Case A: NAS is Geopriv Capable



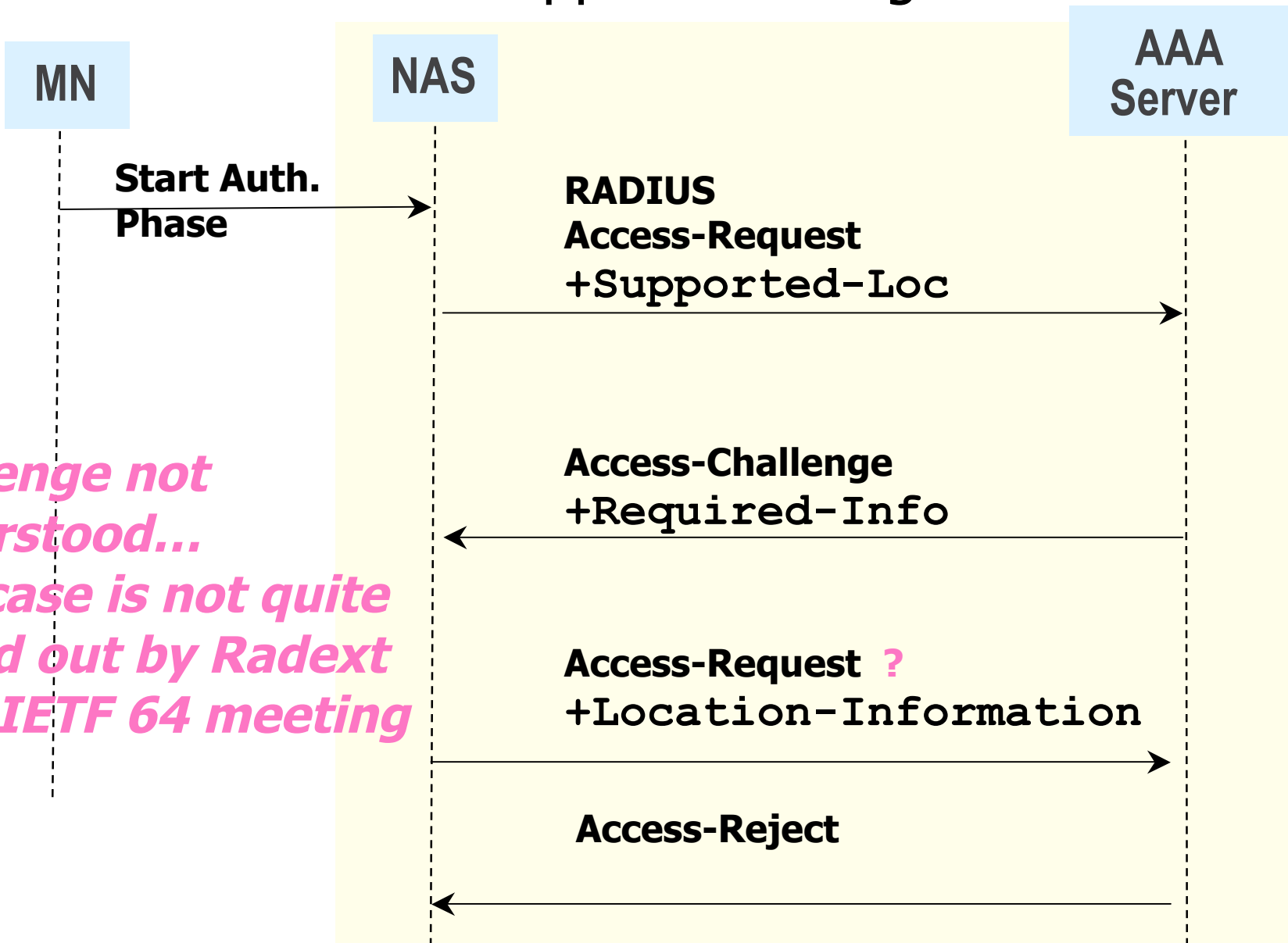
Dynamic Scenario for location-based authorization

Case B: NAS cannot deliver requested info



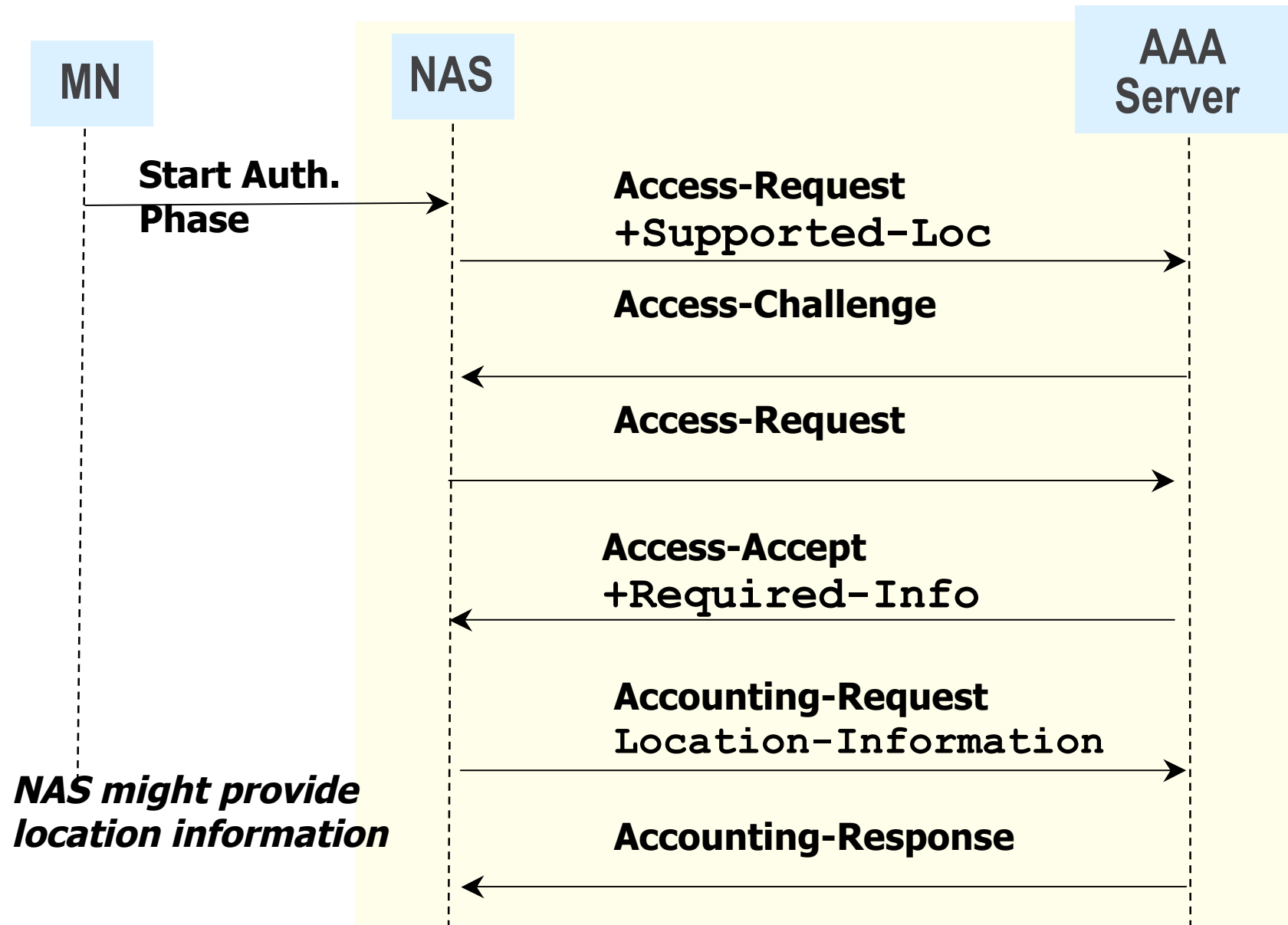
Dynamic Scenario for location-based authorization

Case C: NAS does not support Challenge



*Challenge not Understood...
This case is not quite sorted out by Radext as of IETF 64 meeting*

Dynamic Scenario Location for Billing, Taxation and Accounting



Impact for Scenarios

- The 3GPP Rel-6 I-WLAN deployment scenario requires Challenge to be supported by the NAS since EAP is used.
- GSMA IR.61 WLAN roaming scenario does not mandate the support for a Challenge but mandates the transport of certain location attributes.

Points for GEOPRIV

- RADEXT is working on resolution of its tough protocol issue with the next rev
 - Scenarios are addressed without adding Capability
- There have been a number of issues in the RADEXT issue tracker*
 - We have now elicited the authors to confirm their issues are resolved, on the radext mailing list
 - More mail about resolved issues is coming
 - In particular, issues of mid-session re-authorization (Change of Authorization / COA / RFC 3576), which are due to RADIUS protocol, should get settled this week
- From here, goal is to WGLC/review the **geo** and **priv** aspects
- GEOPRIV will track and resolve the issues.

*<http://www.drizzle.com/~aboba/RADEXT/>
Closed by mail (not yet on site): 23, 24, 27, 28, 29.
Mail coming shortly: 26, 71, 72, 73, 85, 86
Open: 70, 74, 131