

Diameter QoS Attributes and Diameter Qos Parameters

Presenter: Mayutan A.

References

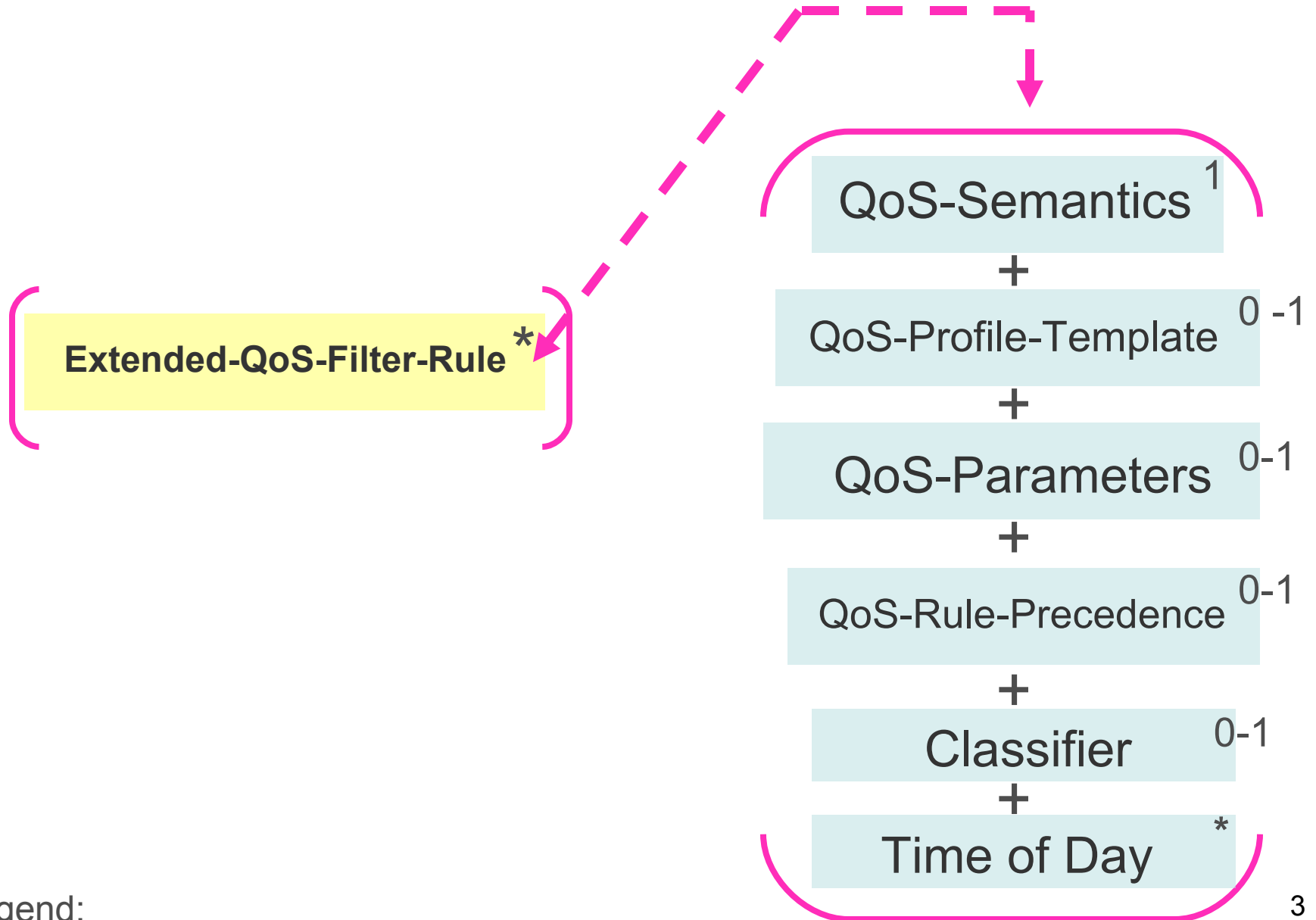
- QoS Attributes (Actions)

<http://tools.ietf.org/html/draft-ietf-dime-qos-attributes>

- QoS Parameters (values)

<http://tools.ietf.org/html/draft-ietf-dime-qos-parameters>

QoS-Resources*



Legend:
*: May appear more than once

Extended QoS-Filter

- QoS-Semantics (QoS-Desired, QoS-Available, Minimum QoS)
- QoS-Precedence rules(execution order of the rules present in QoS-Resources)
- Classifier (classifies the packets for treatment [From, to direction, Ip options etc])
- QoS-Template (the template of the Qos-parameters)
- QoS-Parameters (<http://tools.ietf.org/html/draft-ietf-dime-qos->)
- Time-of-Day

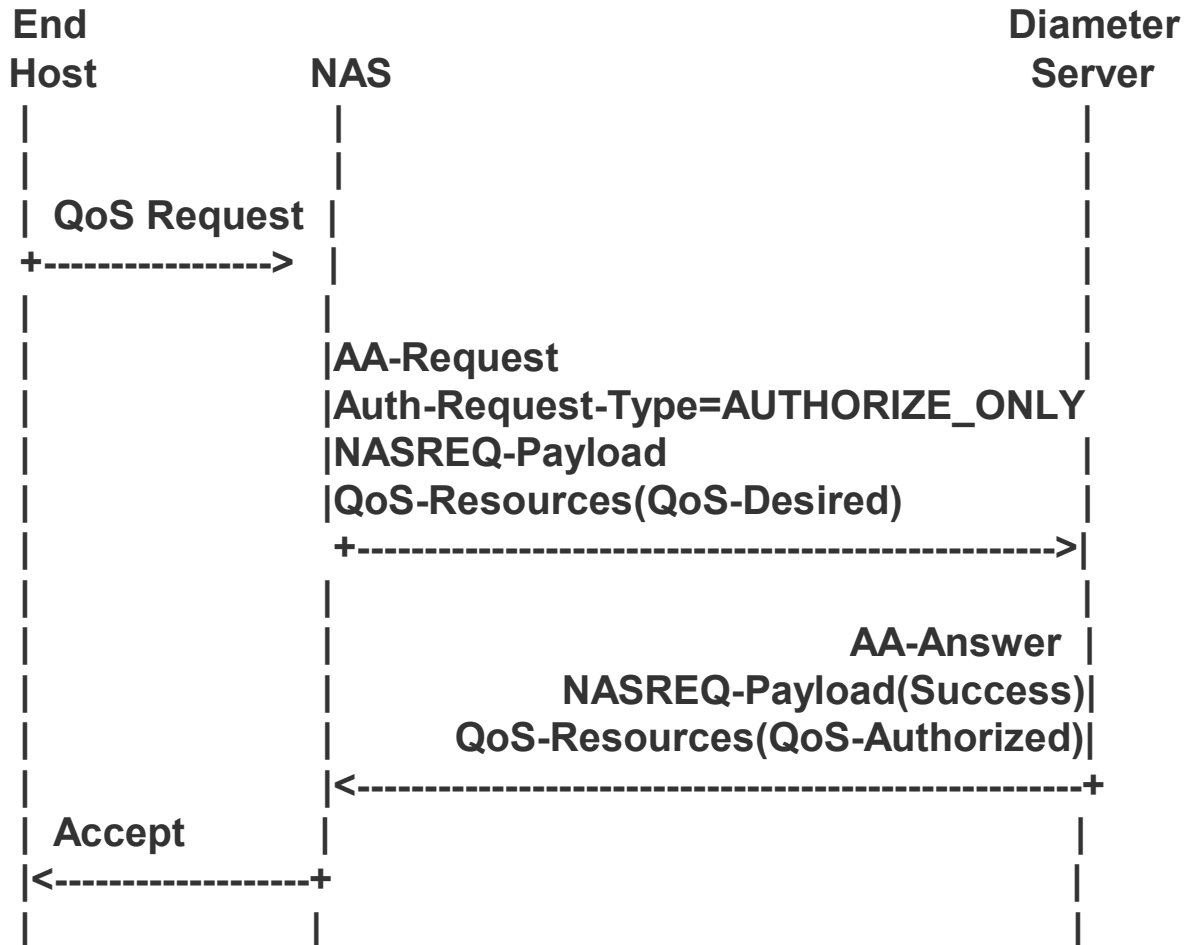
Example 1

Semantic

- AAA server provides QoS information for a particular end host to the NAS
- Subsequent signaling is necessary to activate the QoS parameters.
- The example should indicate that the user is allowed to consume X/sec

Example 1

Message flow

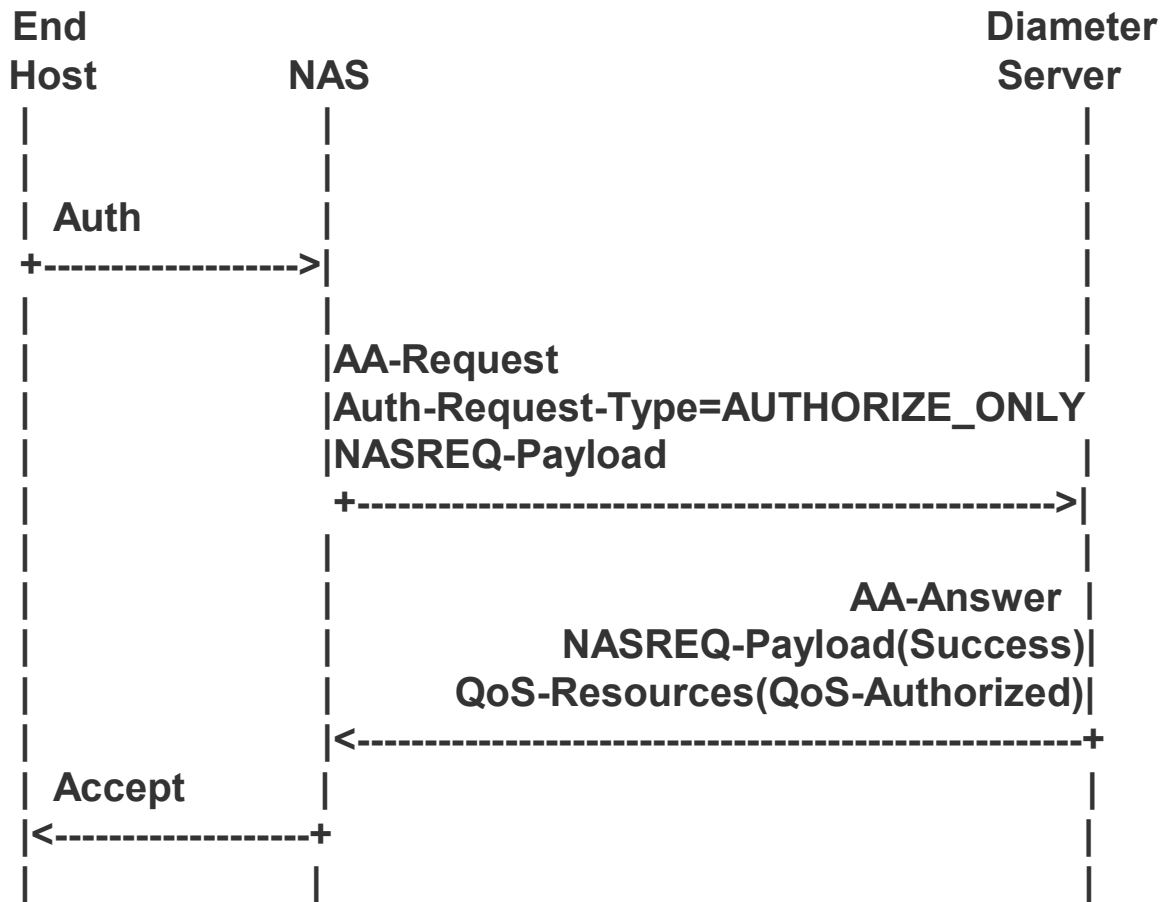


Example 2

Semantic

- AAA server provides QoS information for a particular end host to the NAS
- No signaling is necessary for the end host
- Examples indicates that a particular user is allowed to consume a certain uplink and downlink bandwidth

Example 2 Description



Example 2

Description

- **Extended-QoS-Filter-Rule**
 - **QoS-ID = 1**
 - **Direction = upstream**
 - **QoS-ObjectType = QoS-Authorized**
 - **QoS-Parameters**
- **Extended-QoS-Filter-Rule**
 - **QoS-ID = 2**
 - **Direction = downstream**
 - **QoS-ObjectType = QoS-Authorized**
 - **QoS-Parameters**

