



DTN simulation: The Opportunistic Networking Environment (ONE) Simulator

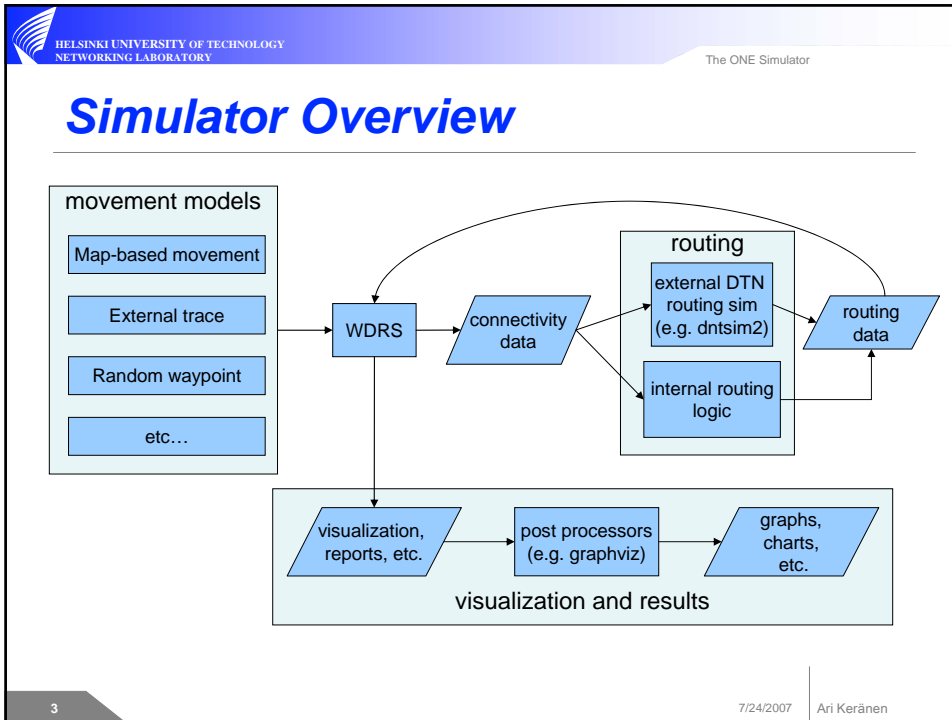
***Ari Keränen
Jörg Ott***

DTNRG @ IETF 69, 24 July 2007



The ONE Simulator

- Visualizes the movement of nodes
- Generates connectivity data from mobility model
 - Can generate output e.g. for dtnsim2 and ns-2
- Supports internal and external routing
 - Can read dtnsim2's output of routing decisions
 - Contains implementations of different routing algorithms
- Visualizes message passing in the simulator
 - simulator can be automatically paused on interesting events and uninteresting events can be filtered out
- Generates reports of connections and message passing
 - simple logs of e.g. connection times
 - graphs using Graphviz (adjacency, message paths...)

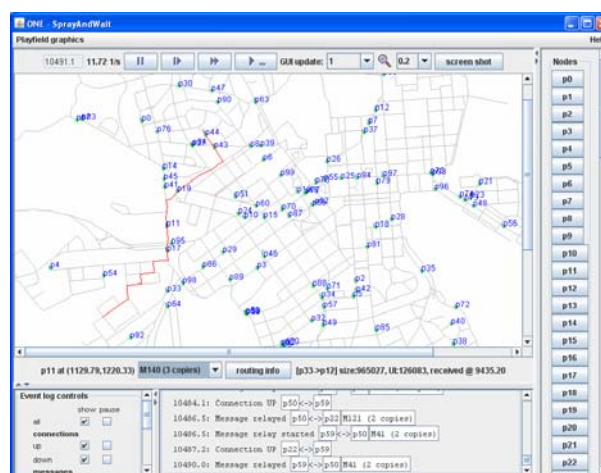


- HELSINKI UNIVERSITY OF TECHNOLOGY NETWORKING LABORATORY The ONE Simulator
- ## Components (1)
- Mobility Generation
 - Random Waypoint
 - “Random Helsinki Model” (map-based)
 - “Not-so Random Helsinki Model”
 - Communities, points of interests, ...
 - Node groups
 - Further steps to model behavior and motion
 - Interfaces to dtnsim2, ns2, ...
- 4 7/24/2007 Ari Keränen

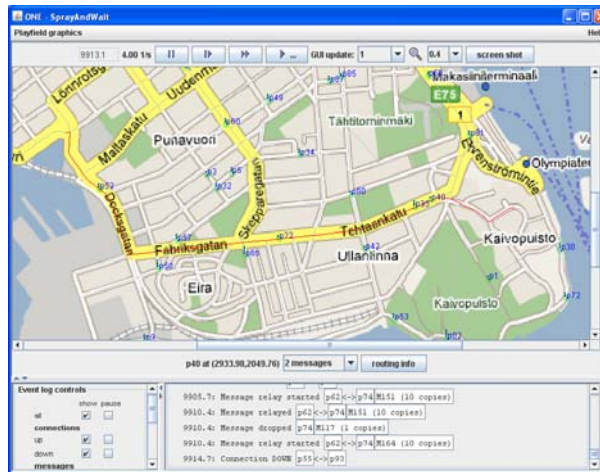
Components (2)

- Routing Core
 - Extensible for different routing/queuing schemes
 - Flooding, Epidemic, PROPHET, Spray & Wait
 - More to come
 - Different mobility feeds
 - “Live feed from the mobility generator”
 - Accepts contact or mobility traces (e.g., CRAWDAD)
- Visualization
 - Interactive real-time visualization
 - Various trace files and summary reports
 - Graphing tools

Screenshots



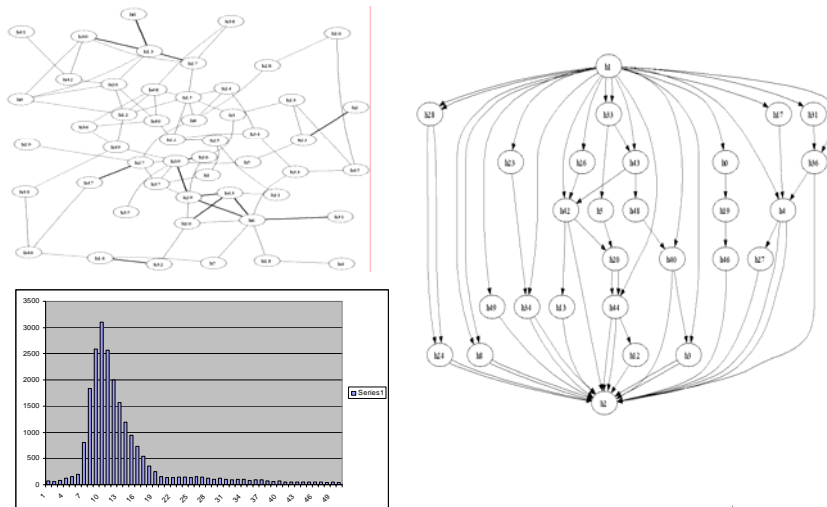
Screenshots



7

7/24/2007 Ari Keränen

Example reports



8

7/24/2007 Ari Keränen



ONE Download (GPL)

<http://www.netlab.tkk.fi/~jo/dtn/>