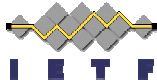


# An Information Model for PPVPNs

*draft-scandariato-ppvpn-info-model-00.txt*



Riccardo Scandariato  
Politecnico di Torino  
[riccardo.scandariato@polito.it](mailto:riccardo.scandariato@polito.it)

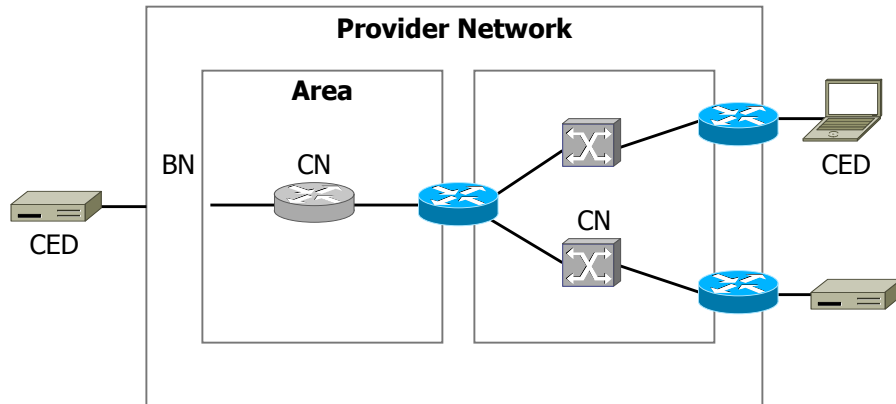


## Agenda

- Reference Model
  - Extensions
- Management
  - Proposal for SW representation of resources



## Reference Model

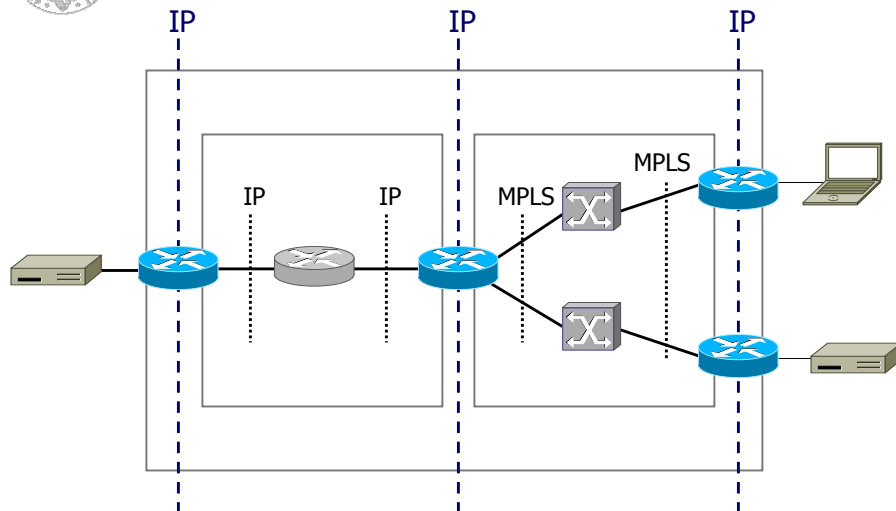


50th IETF

3



## Reference Model (ii)

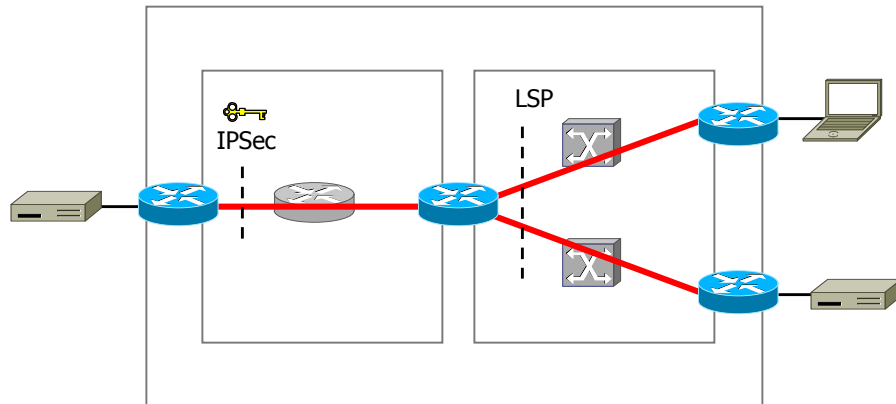


50th IETF

4



## Reference Model (iii)



## Reference Model (iv)

- Support for areas
  - Integration of different technologies
  - Manageability
- We take core nodes into account
  - Traffic Engineering



## Quote Of The Day

*"In order to facilitate the service management, a logical view of the network indicating VPN topology above the backbone topology is useful"*

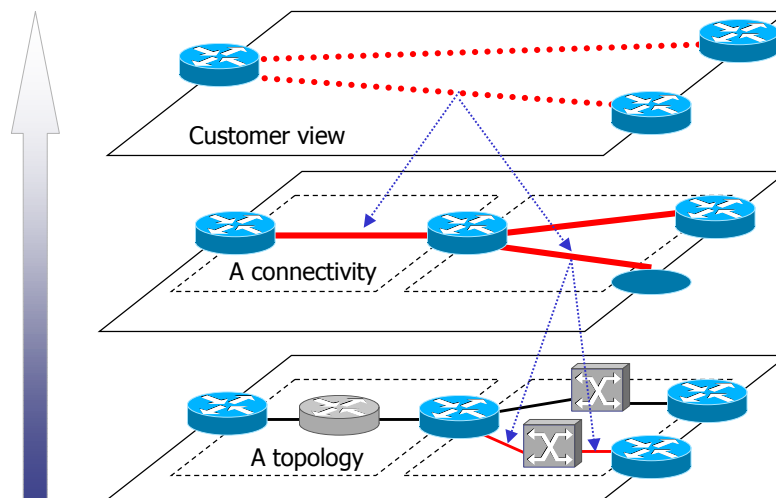
draft-ietf-ppvnpn-requirements-00.txt

50th IETF

7



## Abstractive Approach

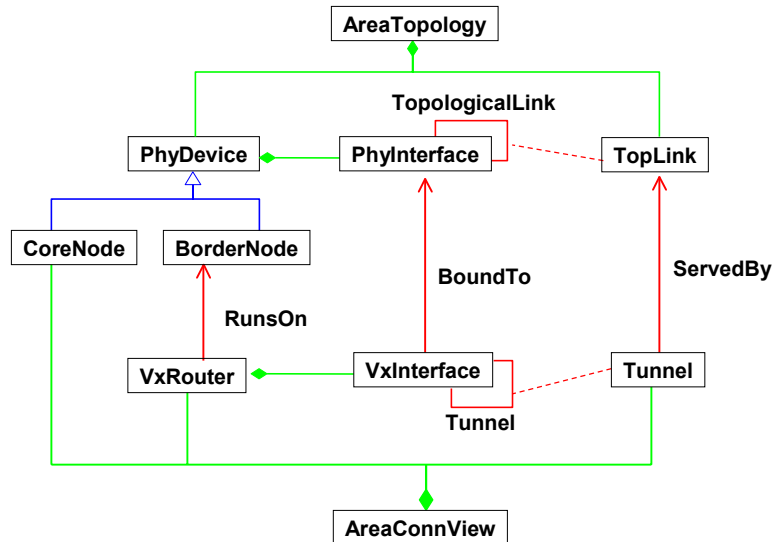


50th IETF

8



# Information Model



50th IETF

9



# SW representation

- Two layers of abstraction
  - Topology View (e.g. Links and Devices)
  - Connectivity View (e.g. Tunnels and VFIs)
  - Mapping between Connectivity entities and Topology entities
- Management architecture
  - VPN requests expressed at topmost level
  - VPN management&verification operated at lower levels

50th IETF

10



# Thank you!

---

- Patricia Lago  
Assistant Professor  
*patricia.lago@polito.it*
- Riccardo Scandariato  
Ph.D. Student  
*riccardo.scandariato@polito.it*