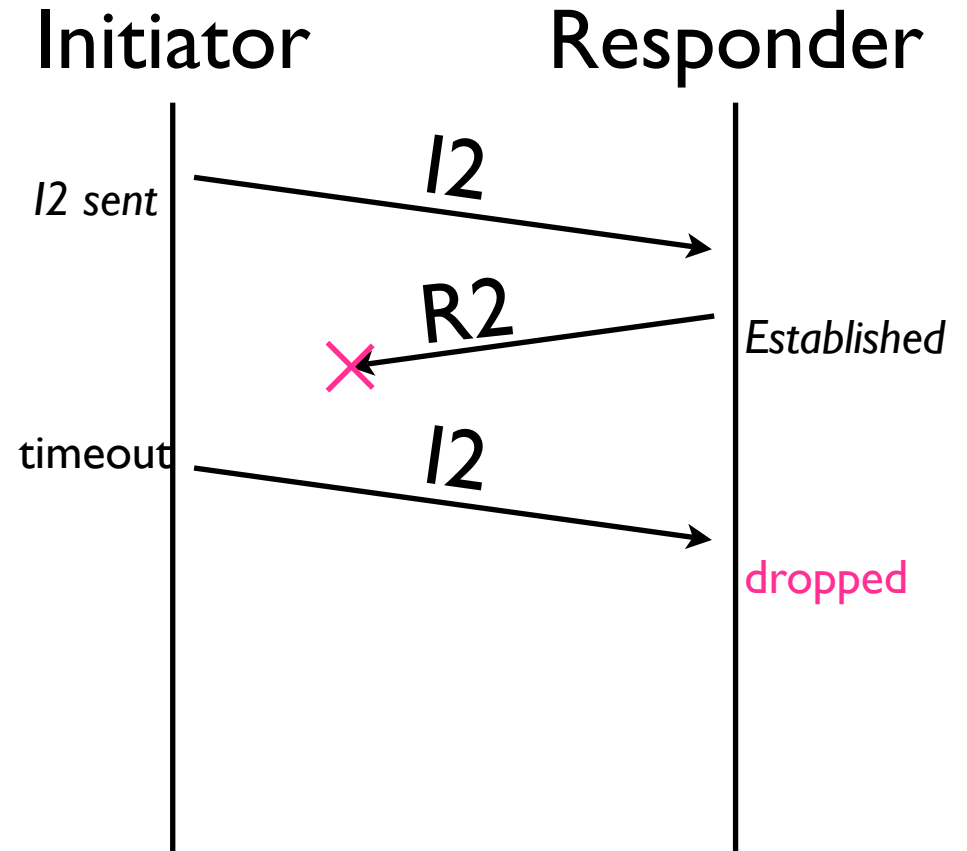


HIP base issue 23: Retransmitted I2

HIP WG meeting
IETF-59, March 3, Lotte Hotel, Seoul
Pekka Nikander

I2 retransmission: problem

- After successfully processing I2 and sending R2, Responder goes to the *Established* state
- An I2 received in the *Established* state gets dropped



I2 retransmission: solution

- Add a new state: *R2-sent*
- Process resent I2s in the *R2-sent* state by retransmitting R2
 - I2 verification by simple comparison to a stored packet
- Move to *Established* when starting to receive actual data

