

Configuration Options

draft-bharatia-mip4-gen-ext-00.txt

Jayshree Bharatia (jayshree@nortel.com)

Kuntal Chowdhury (kchowdhury@starentnetworks.com)

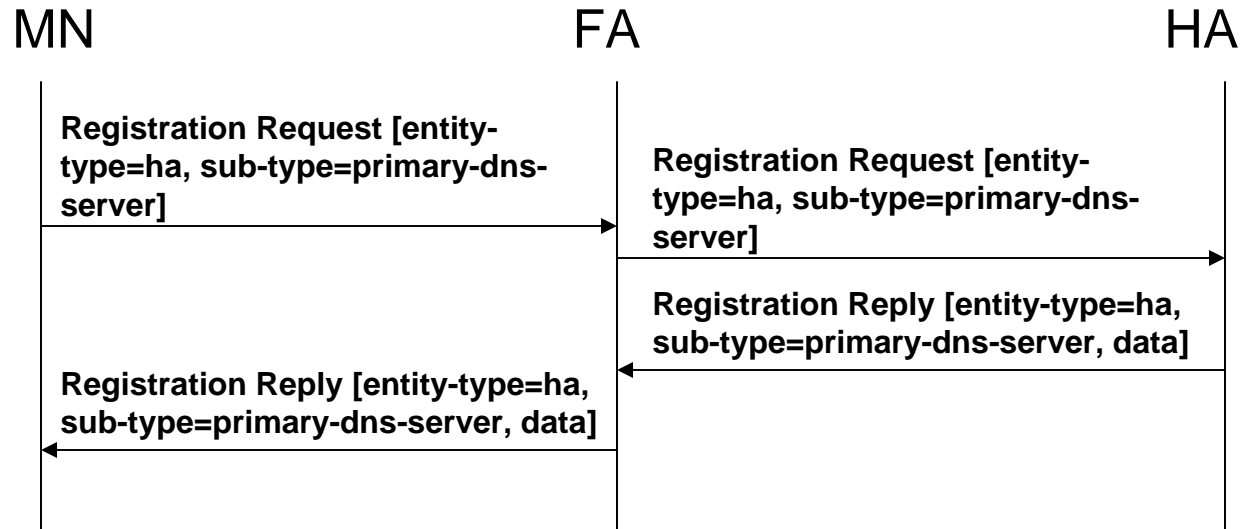
Avi Lior (avi@bridgewatersystems.com)

Lila Madour (Lila.Madour@ericsson.ca)

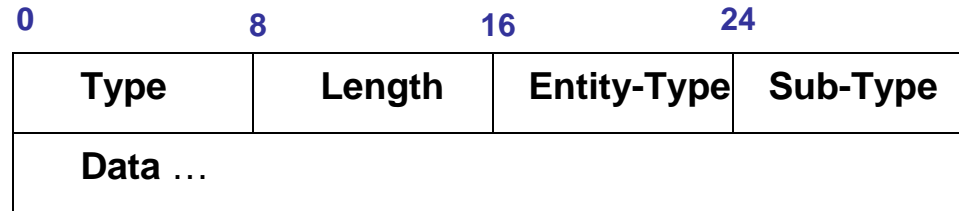
Overview

- Intent is to use short and skippable extension (defined in RFC 3344) for exchanging configuration specific information between the network entity and the MN.
- MN may request specific configuration information from network entities like FA or HA in the Registration Request
- If requested by the MN, the configuration information is provided from the requested entity in the Registration Reply. Default entity is considered HA.

Example



Message Format



- **Entity-Type:** From registration Request perspective, this is the network entity from whom the information is requested. While from Registration Reply perspective, this is the network entity which included configuration data. This can be HA, FA etc.
- **Sub-Type:** The type of entity whose information is requested from the network entity mentioned in Entity-Type. This can be primary-dns-server, secondary-dns-server etc.