

IPv6 RADIUS attributes for DHCP based networks draft-lourdelet-radext-ipv6-dhcp-00

Benoit Lourdelet
radext/dhc WG group
IETF 72, 07/2008

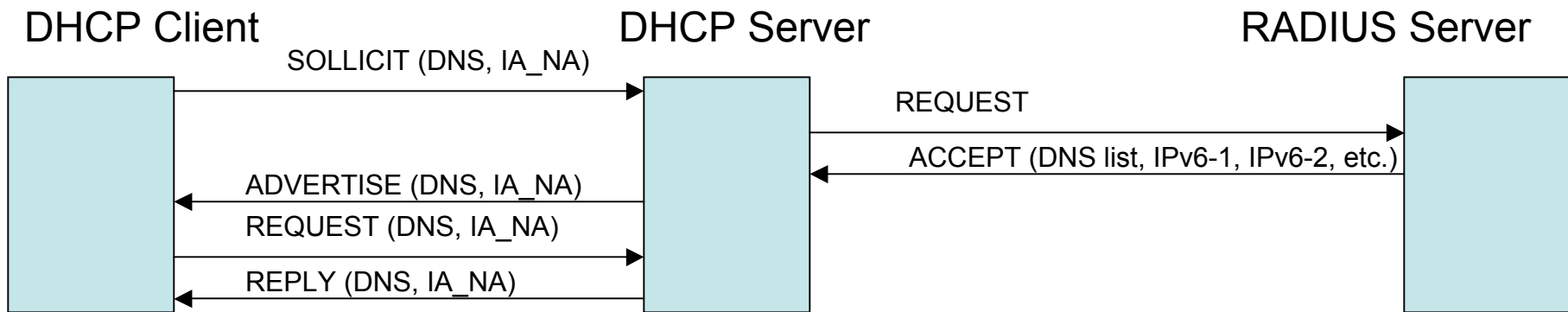
Problem Statement

- Since the days of RFC3162, DHCPv6 acquired a dominant position in IPv6 broadband deployments
- RFC3162 needs additions to accommodate IPv6 production networks

Requirements

- IPv6 DNS location needs to be configured on a subscriber basis
 - Wholesale, VPN
- Individual IPv6 addresses must be offered to the Subscriber
 - concatenation of prefix and interface-id attributes does not cover all cases : off-link, multiple

Deployment scenario



- New RADIUS attributes mapping to key DHCPv6 attributes
 - A list of DNS Server IPv6 addresses
 - IPv6 address

How to move forward

- Adopt as a WG item (radext or dhc)

Thank You !