

robust NETCONF

<draft-cole-netconf-robust-config-02.txt>

Robert G. Cole¹ Dan Romascanu² Andy Bierman³

¹US Army CERDEC
robert.g.cole@us.army.mil

²Avaya
dromasca@avaya.com

³Interworking Labs
andy@iwl.com

22 Mar 2010 / IETF-Anaheim

objectives and benefits

Definitions:

- Validation - checking against a set of rules, e.g., all checks prior to moving configuration to <running/>.
- Verification - measuring behavior (of <running/>) against expectations.

Objectives:

- Minimize faulty configuration,
- Minimize disconnects in networks with no 'out-of-band' access, e.g., MANETs or DTNs, and
- Develop inter-operable mechanisms for verification testing.

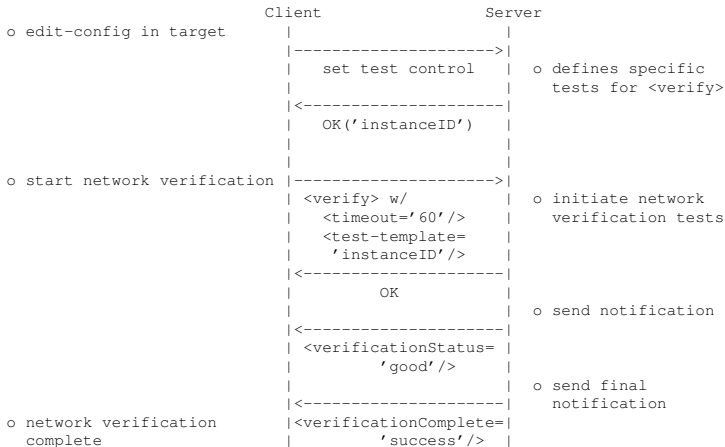
changes from 01 to 02

- Version 01 had originally proposed to couple verify with <commit> through a <verified-commit> operation.
- It was proposed on the mailing list (i.e., M. Bjorklund) to decouple the verify operation, which we have done in ver-02.
- ver-02 defines the new verify.yang module which is to be advertised according to the YANG specification [2].
- The module verify.yang defines:
 - Operations - <verify>, <cancel-verify>, and <complete-verify>,
 - Notifications - <verificationStatus> and <verificationComplete>, and
 - Requirements - on inter-operable test.yang modules.

verify.yang

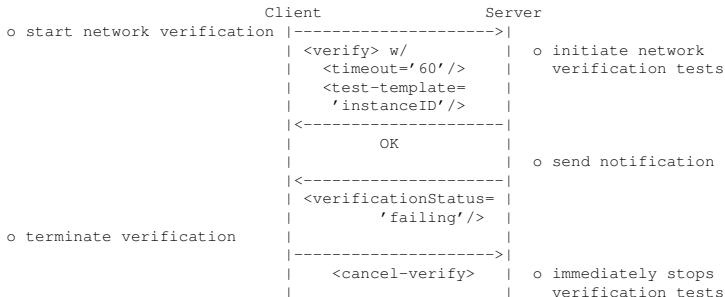
- Pushes verification testing to the server.
- Multi-stage operation, i.e., <verify>, <complete-verify> and <cancel-verify>
- '*Verification test suite*' comprised of multiple '*test sets*' per <verify> operation.
- Multiple parameters, i.e., test-templates instancelds, verbose reporting and test period.
- Multiple notifications, i.e., <verificationStatus> and <verificationComplete>.

<verify> example



- A simple <verify> test example.

<cancel-verify> operation



- A <verify> test gone bad.
- Client issues a <cancel-verify> operation to immediately terminate tests.

example ping.yang

Defined an example, simple test module for discussion

- ping.yang module defined in appendix of draft
- verify.yang places requirements on the development of inter-operable test modules as identified in the draft, i.e.,
 - Test sets contained in a leaf-list indexed via instanceID.
 - Pass/fail determinations of Test Set results and test suite results.
 - Raw results contained in leaf-list.
- ping.yang represents an extremely simple example; extensible test.yang modules being developed.

Questions

Questions

- ?

Next Steps

- Flesh out more extensive test modules in YANG.

References

- 1 Cole, R.G., Romascanu, D. and A. Beirman, *Robust NETCONF*, IETF Draft, <draft-cole-robust-netconf-02.txt>, March 2010.
- 2 Bjorklund, M., *YANG - A data modeling language for NETCONF*, IETF Draft, <draft-ietf-netmod-yang-11.txt>, February 2010.