

# PCEP extensions for GMPLS

PCE WG, IETF 81

draft-ietf-pce-gmpls-pcep-extensions-03

*Cyril Margaria*

Nokia Siemens Networks

*Oscar González de Dios*

Telefonica Investigacion y Desarrollo

Fatai Zhang

Huawei Technologies

# Differences from 02.txt

- More consistent RBNF
- Reference which requirement the objects address.
- Make the extensions “lighter” to implement : do not require support for all the features

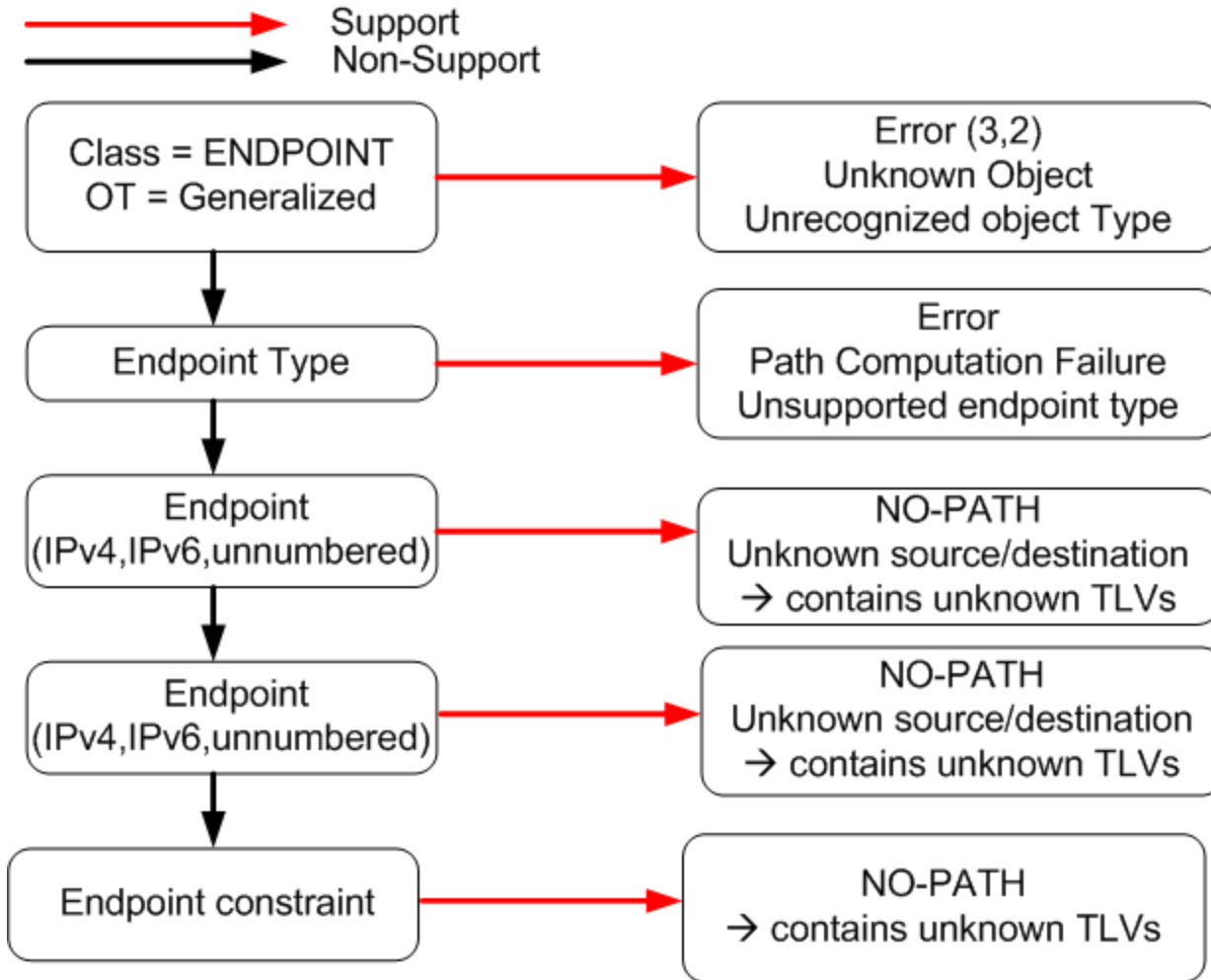
# Processing rules

- RG flag : can be ignored, **MUST** be mirrored if considered
- GENERALIZED-BANDWIDTH, LOAD-BALANCING , LABEL SETs : support completely optional, PCC must use the P (Processing bit) if it requires it

# Processing Rules (2)

- LSPA :
  - Optional, if used MUST be mirrored.

# Processing Rules END-POINT



# Processing Rules (3)

## END-POINT :

- new OT : can be rejected with Error (3, 2)
- endpoint-type : none is mandatory, corresponding error returned
- TLVs :
  - Endpoints : not supported error mapped to **“Unknown source/destination”**
  - Constraints: Specific error codes

# Next Steps

- Does WG see missing points?
- Has anyone started implementing those extensions?
  - So far feedback on 3 early implementations

Questions?