

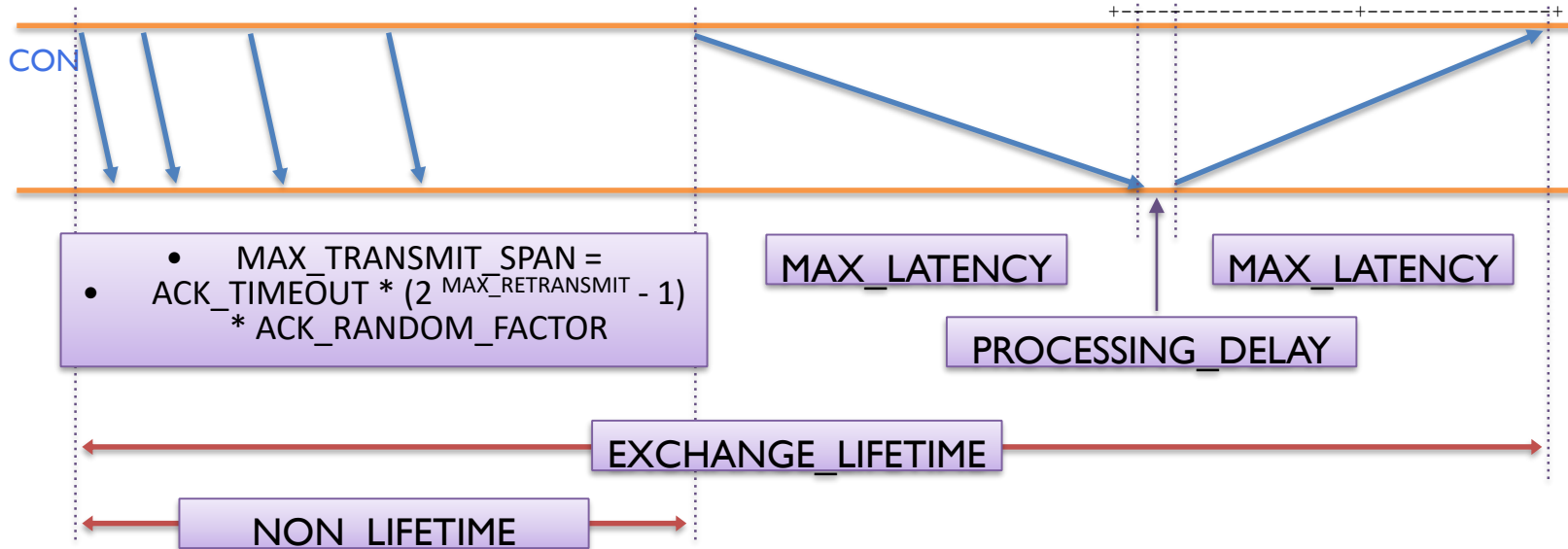
Time Scale Option

Authors:

Laurent Toutain <Laurent.Toutain@imt-atlantique.fr>

Worst case

name	default value
MAX_TRANSMIT_SPAN	45 s
MAX_TRANSMIT_WAIT	93 s
MAX_LATENCY	100 s
PROCESSING_DELAY	2 s
MAX_RTT	202 s
EXCHANGE_LIFETIME	247 s
NON_LIFETIME	145 s



- $MAX_TRANSMIT_SPAN =$
- $ACK_TIMEOUT * (2^{MAX_RETRANSMIT} - 1) * ACK_RANDOM_FACTOR$

Sender: Do not re-use Message ID, Receiver : filter duplicate Message ID

CoAP Server



- SCHC makes LPWAN devices act as IP devices
- Default EXCHANGE_LIFETIME do not apply
- CoAP Server must be informed of a longer delay
- TS option carries value of EXCHANGE_LIFETIME
 - Server may use it
 - Server may limit the number of pending messages