

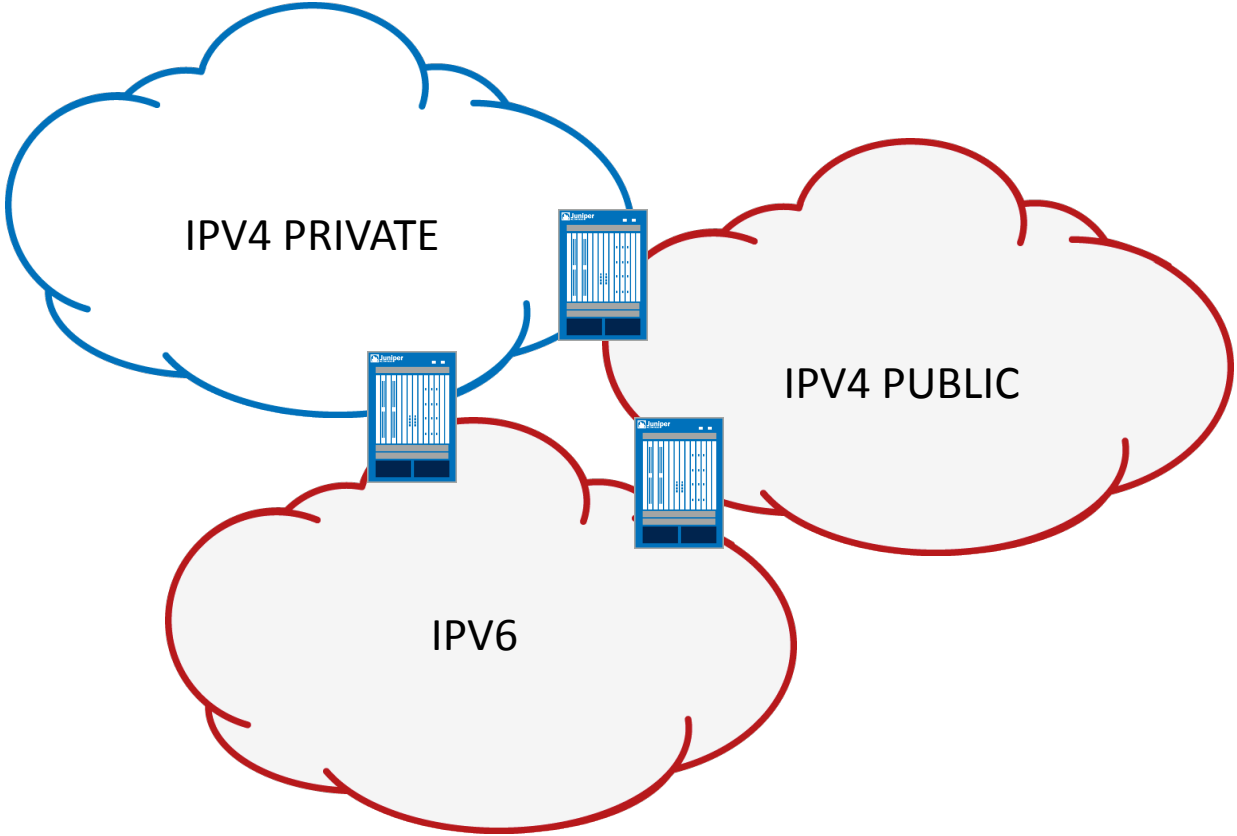
ALTO AND IPV4/IPV6 CO- EXISTENCE AND TRANSITION

RPENNO@JUNIPER.NET

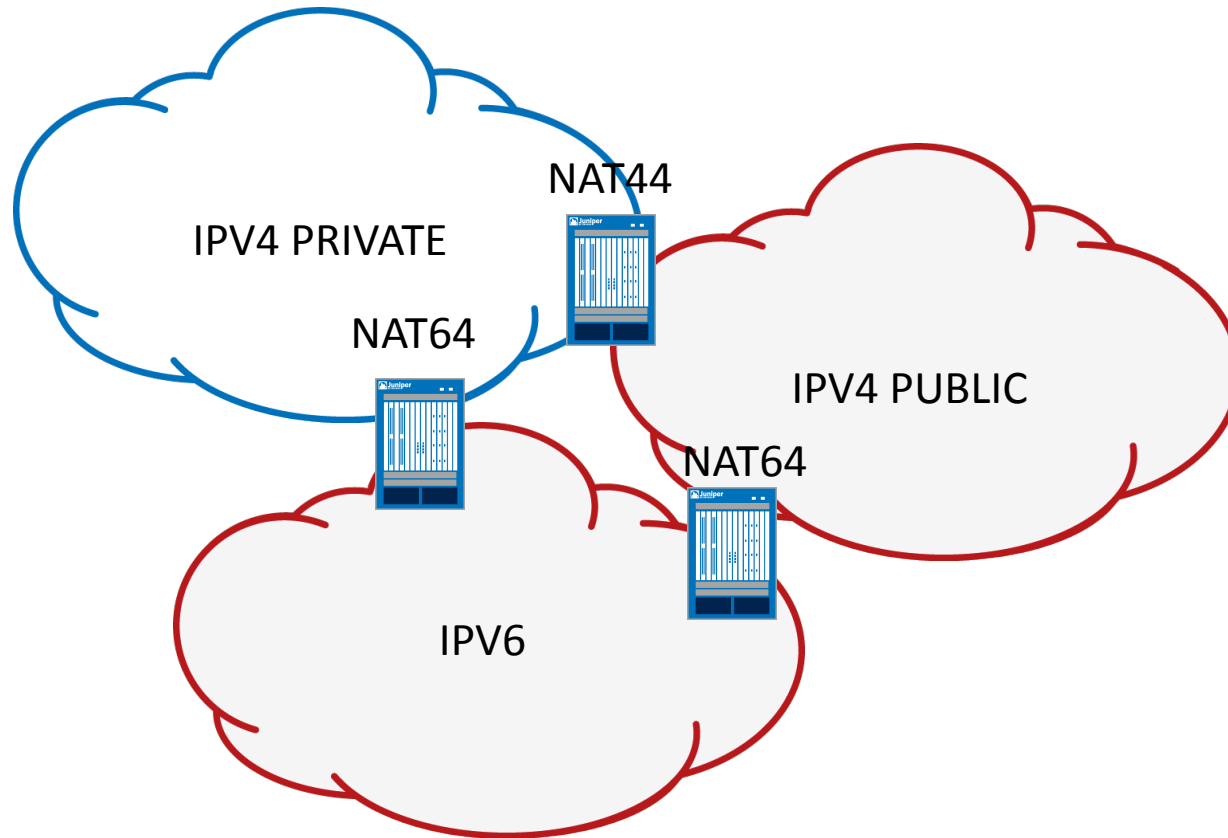
THE PROBLEM

- We are running out of IPv4
- Today there are already three address families on the Internet: IPv6, IPv4-Private and IPv4-Public
- Most of the co-existence tools involve some kind of NAT
- NAT moves into the network

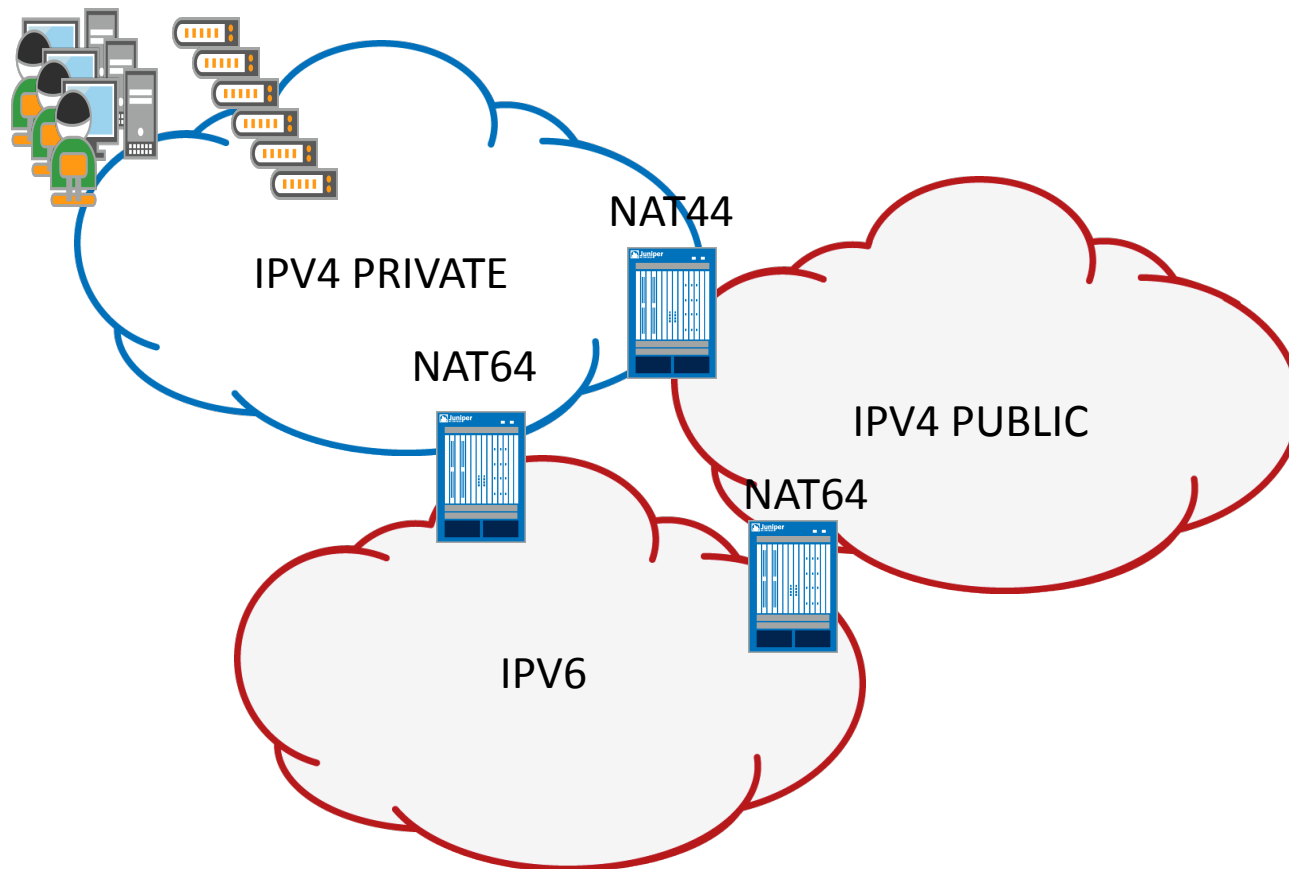
MULTIPLE ADDRESS FAMILIES



Different NAT flavors



NAT moves to the EDGE/CORE



Summary

- Placement of ALTO Server
- Map redistribution
- Normalization of maps
- Registration
- Cost maps
 - Hairpinning, internal vs. Public