

Intserv/Diffserv Framework draft-ietf-issll-diffserv-rsvp-02.txt

**Yoram Bernet
Raj Yavatkar
Peter Ford
Fred Baker
Lixia Zhang
Michael Speer
Bob Braden
Bruce Davie**

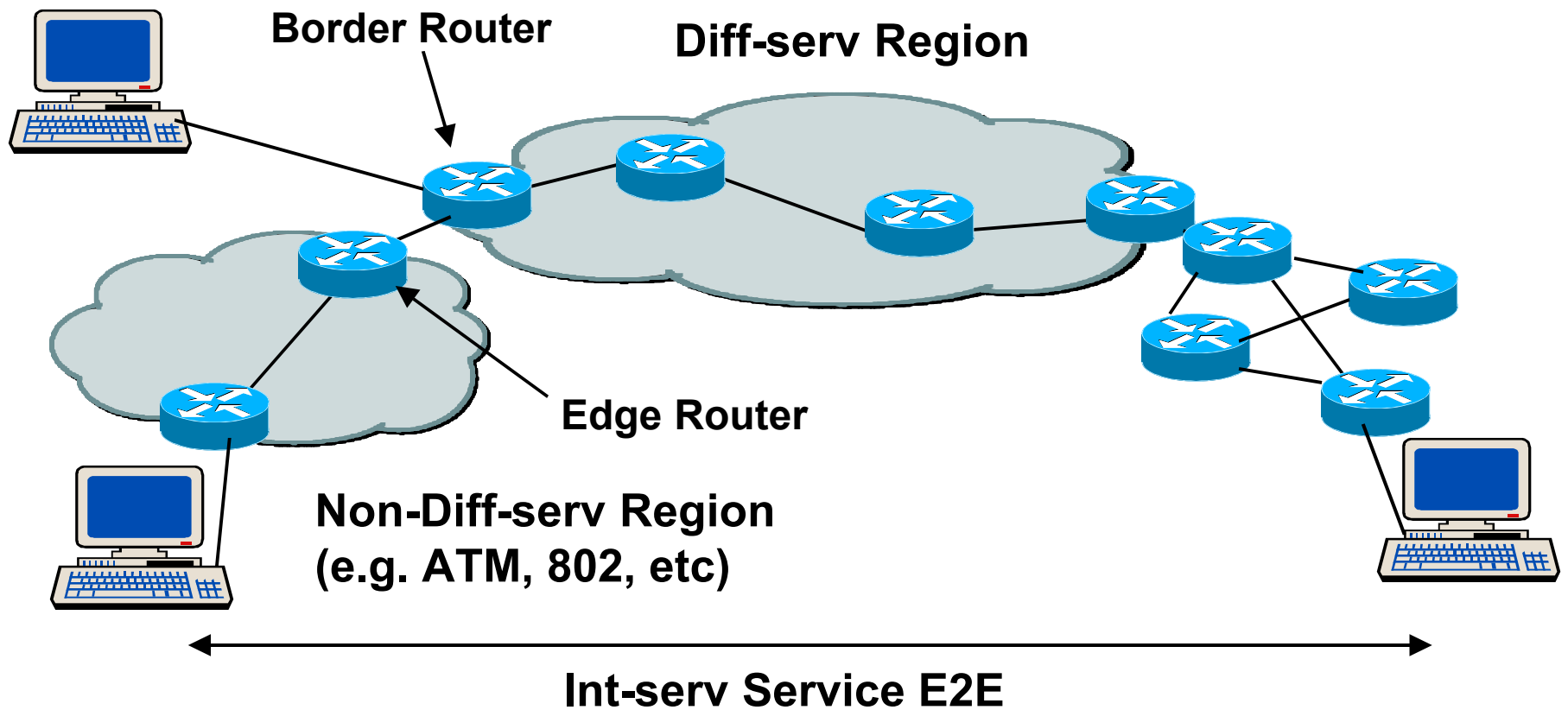
Draft Overview

- **A Framework for E2E Integrated Services over Diffserv clouds**
- **Includes:**
 - a problem statement**
 - a network model**
 - components of solution**
 - problems to be addressed**
 - discussion of tradeoffs**
 - several example scenarios**

Problem Statement

- **Given the presence of a Diffserv “cloud” in a network that aims to support Intserv E2E, how do we meet the QOS goals of applications?**
- **Analogous to handling ATM, 802, etc. clouds in Intserv networks**

Network Model



Solution components

- **Internal behavior of the DS cloud**
 - PHB selection and edge function selection**
 - BW management**
 - Admission control**
 - Path characterization**

Solution components 2

- **External interface**

Basic intserv stuff (e.g. handling requests, Adspec export etc)

Negotiation of DSCP marking task assignment

Communication of DSCP to peer network/host

Tradeoffs

- **BW management choices for DS cloud**
 - static, RSVP, aggregated RSVP, other protocol (e.g. COPS/DS)**
- **Upstream vs. border marking**
 - Scalability, Performance vs.**
 - Compatibility, Administrative control**

Changes from last version

- **Main change: decouple RSVP from int-serv**

DS cloud behavior defined independently from use of E2E RSVP

(RSVP in DS cloud was always optional)

- **More on service mapping, microflow isolation**
- **Cleanup of definitions, nits**

What's missing?

- **More to be said about multicast**
- **Some cleanup of model/definitions**
s/Intserv region/non-Diffserv region/g
- **Others?**