

Use of CxTP for PANA

draft-bournelle-pana-ctp-02.txt

Julien Bournelle

Maryline Laurent-Maknavicius

Hannes Tschofenig

Yacine El-Mghazli

Gerardo Giaretta

Yoshihiro Ohba

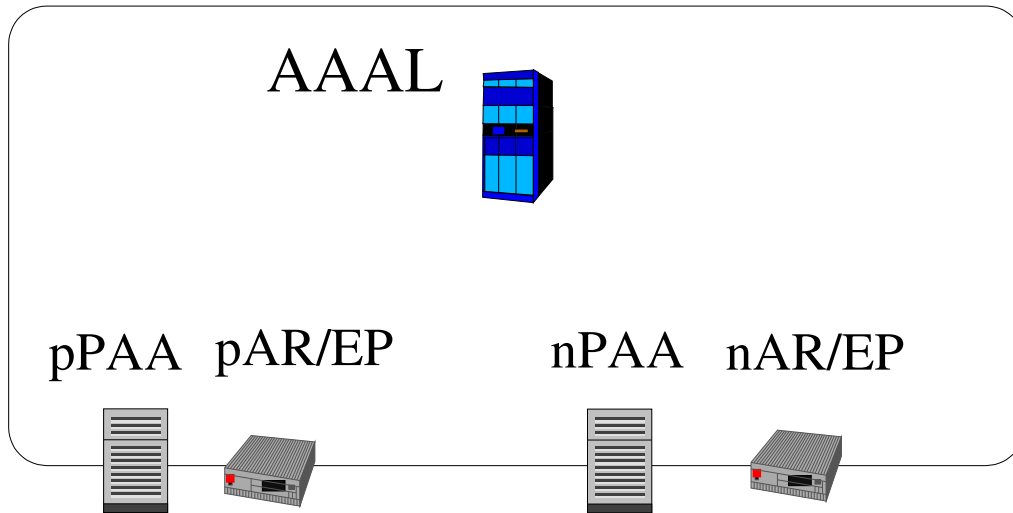
Rafa Marin Lopez

Outline

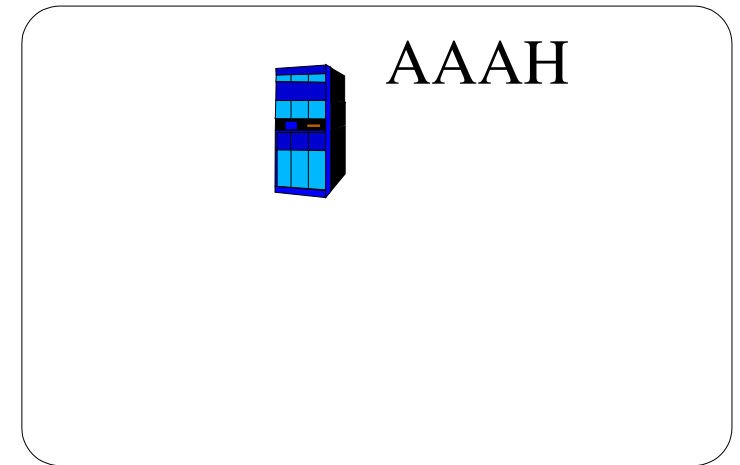
- Problem
- 2 approaches:
 - CxTP between PAAs
 - CxTP between ARs
- AAA interactions
- PANA context
- Next steps

Problem

Visited domain



Home domain



PANA client



nPAA will authenticate PaC whereas it has already been authenticated by pPAA

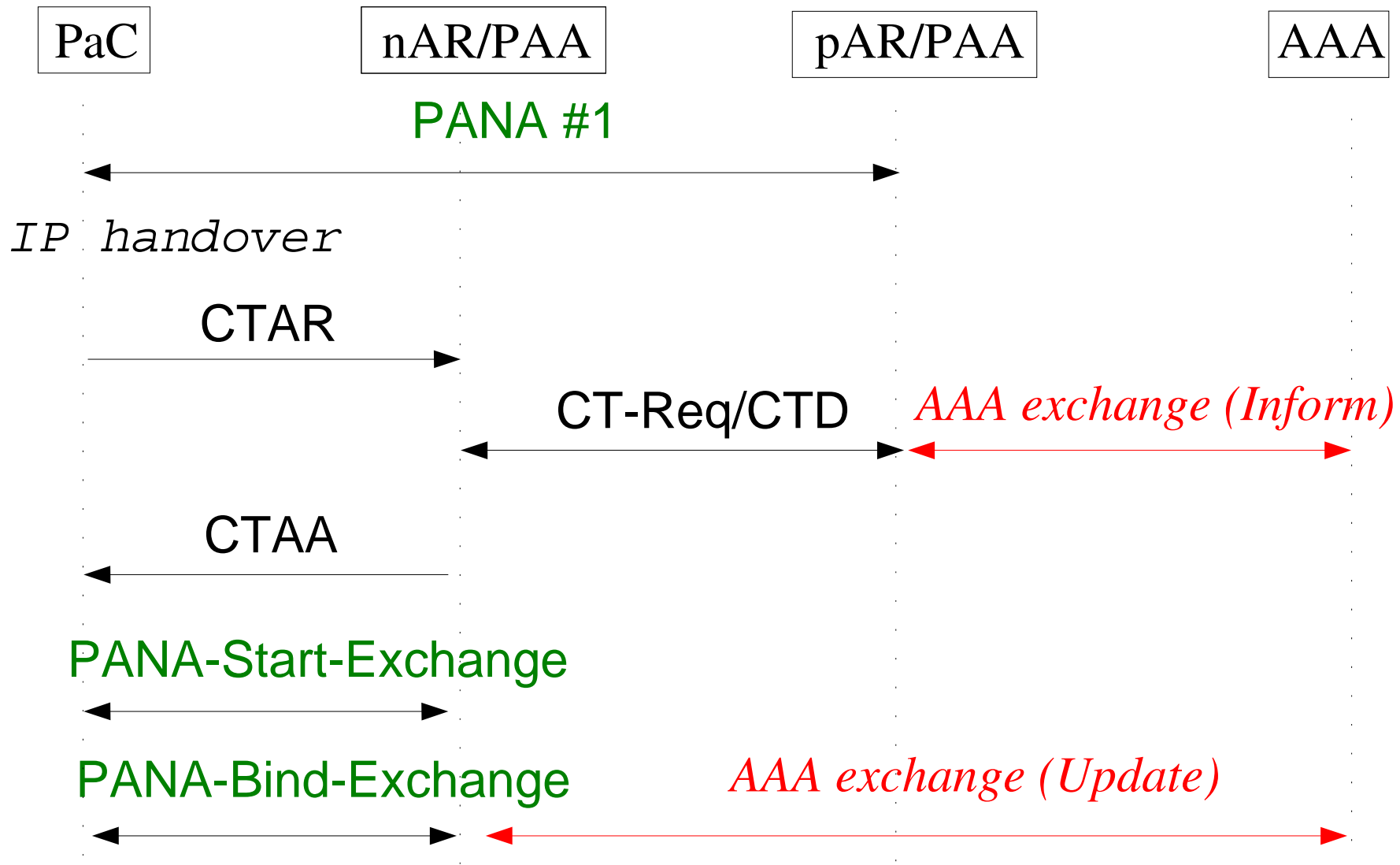
Contents of the I-D #2

- We describe 2 approaches using CxTP
 - CxTP between PAAs
 - PANA friendly (cf. `draft-ietf-pana-mobopts-00`)
 - CxTP more friendly (use of CTAR message)
 - Optimized CTP (CTAR embeds in PSA)
 - CxTP between ARs
- Interaction with AAA
- PANA context

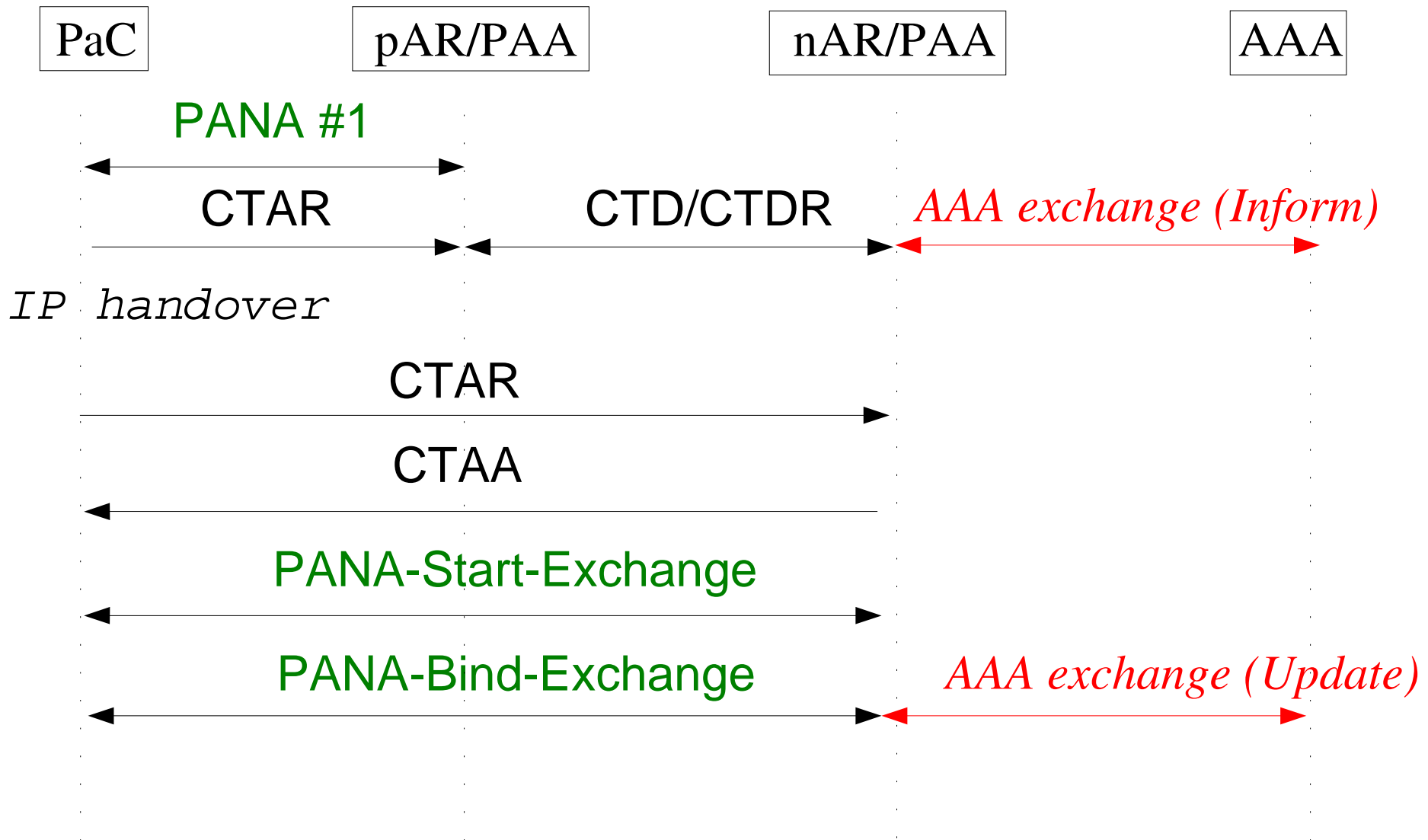
CxTP between PAAs

- `draft-ietf-pana-mobopts-00`
 - Predictive mode not supported
 - PSA triggers the transfer
 - Use CT-Req/CTD without CTP auth. token
- CxTP “friendly” approach
 - use of CTAR message
 - Predictive mode supported
- Problem:
 - if CxTP already used between ARs: 2 exchanges

CxTP between ARs: Reactive mode



CxTP between ARs: Predictive mode



AAA interaction

- AAA server needs to know the PAA in charge of the PaC
 - Re-authentication
 - Abort/Terminate Session
- pPAA-AAA session-id sent to nPAA
- nPAA should inform the AAA (update)
- Handle in separate document (AAA messages)
 - draft-liu-aaa-diameter-session-mobility-00.txt

PANA context

- Session-lifetime elapsed
- AAA servers identity/pPAA-AAA session-id
- Keying material: AAA-Key-int
- Filtering rules to be applied to EP ?

Next steps

- Separate the 2 approaches ?
 - define a specific PANA CT (pana-mobopts) ?
 - define a more general solution
- AAA-Key-new: need security review
- AAA interaction impacts PANA context
- AR-PAA interface not handle here