

# The IETF68 Network

Morgan Sackett

[Msackett@verilan.com](mailto:Msackett@verilan.com)

# General Status

- VeriLAN is providing network staff
- Setup went easily
- Initial routing issue to certain R&E sites fixed on Monday due to upstream staff availability
- Since then, all quiet on the western front

# Wireless

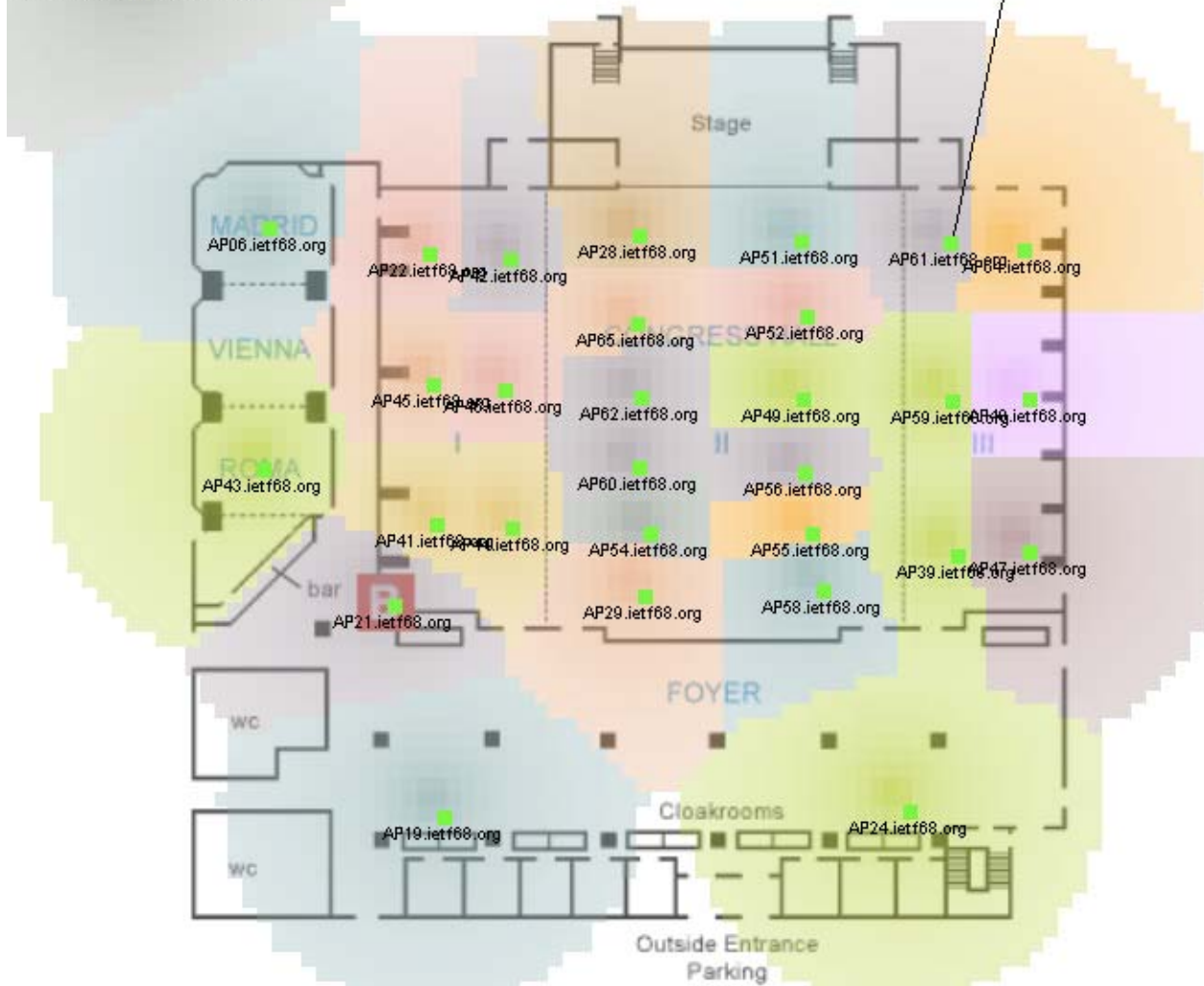
- 69 802.11a/b/g Cisco Access Points.
- Service available in Lower Lobby, Lobby, Mezzanine and 8th floor
- Peak simultaneous wireless users: 749
- 4 Wireless SSIDs
  - Open (ietf68)
  - Open 802.11a (ietf68-a)
  - 802.1x (ietf68.1x)
  - 802.1x 802.11a (ietf68-a.1x)



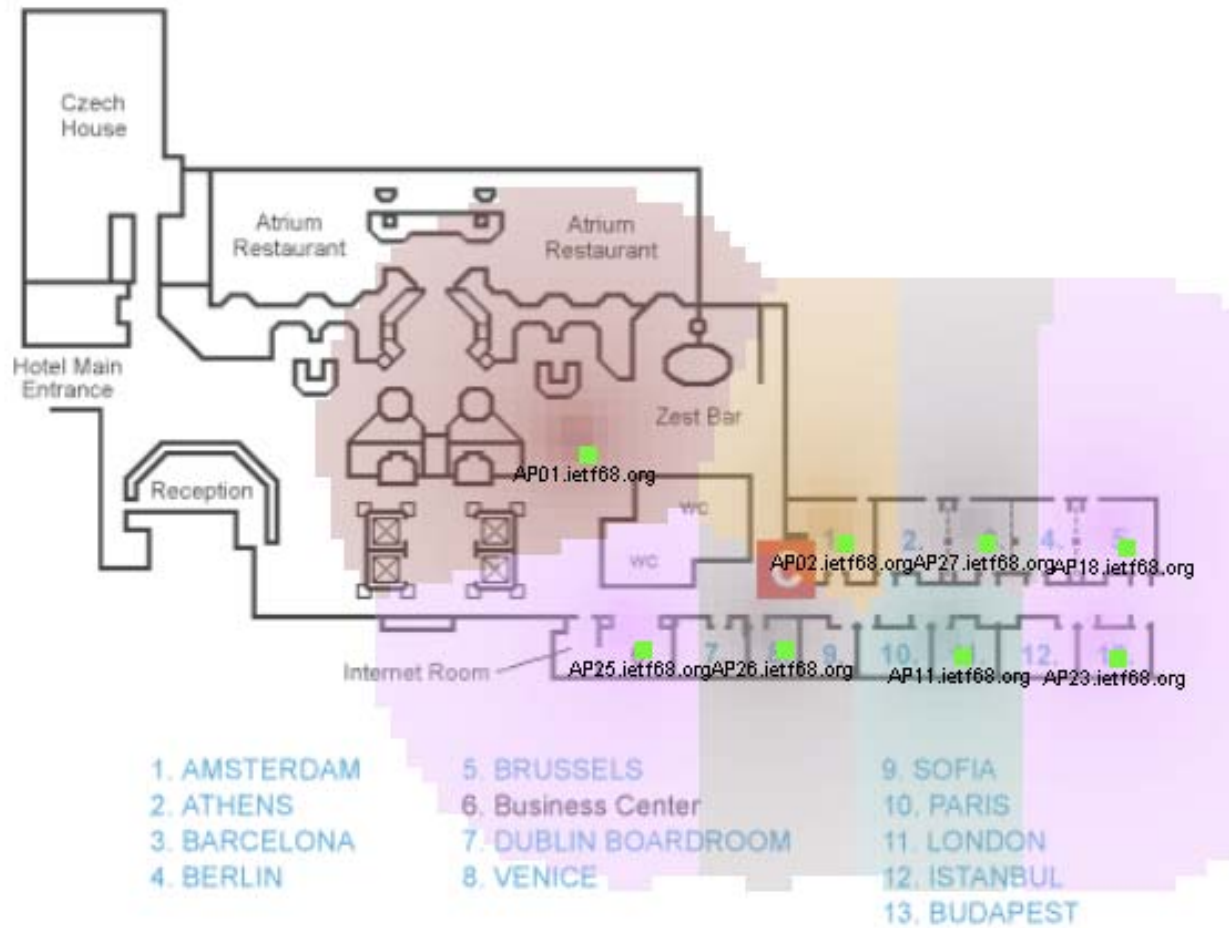
# HILTON PRAGUE INTERNATIONAL - LOWER LOBBY

130.129.1.150 E 023fc0 R 47609

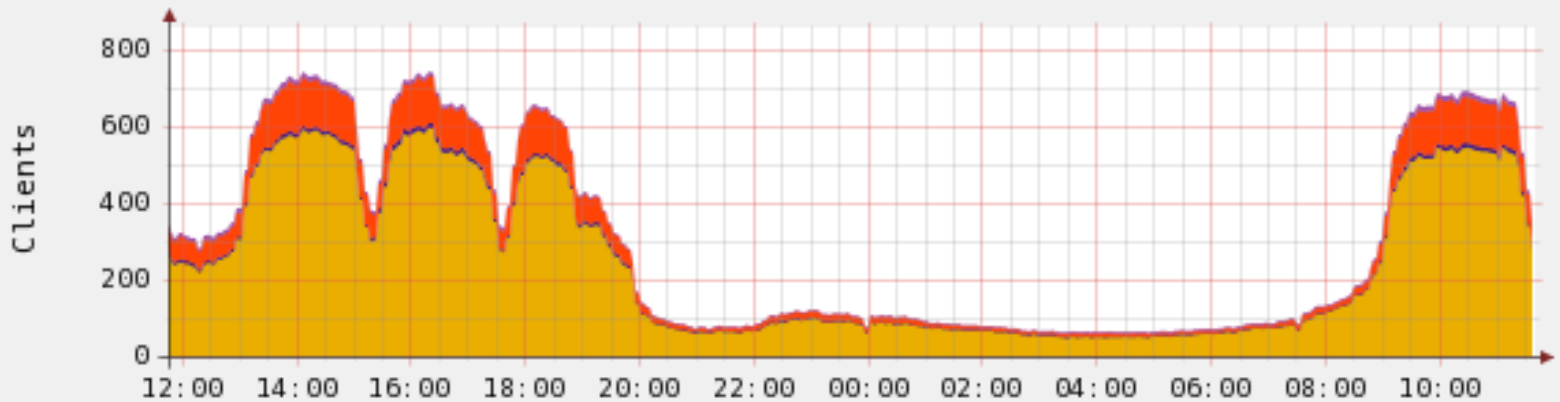
-87 dBm



# HILTON PRAGUE INTERNATIONAL - LOBBY LEVEL



### Associations



|                      |          |        |          |        |          |        |
|----------------------|----------|--------|----------|--------|----------|--------|
| ■ b/g clients        | Current: | 277.21 | Average: | 245.61 | Maximum: | 595.00 |
| ■ b/g clients 802.1x | Current: | 3.01   | Average: | 5.15   | Maximum: | 13.00  |
| ■ a clients          | Current: | 59.06  | Average: | 48.61  | Maximum: | 128.95 |
| ■ a clients (802.1x) | Current: | 7.00   | Average: | 4.49   | Maximum: | 13.00  |

# VeriLAN Staff

- Steven Schroedl
- Andrew Clapp
- David Brossard
- Morgan Sackett



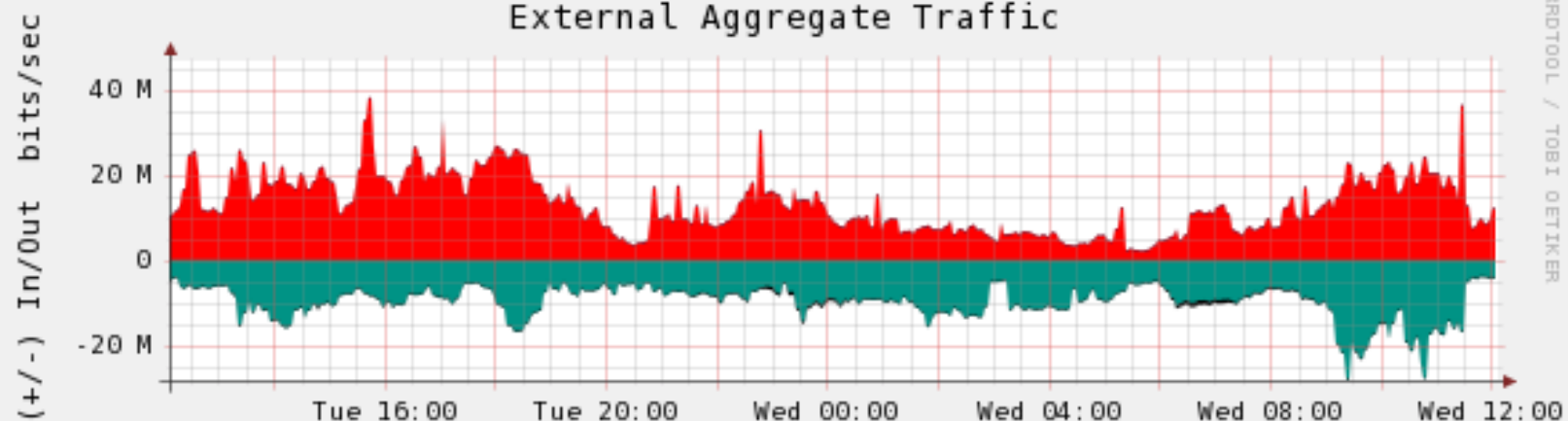
# Contributors

- Cisco Systems
- CESNET
- CZ.NIC
- Dial Telecom

# Volunteers

- Jim Martin
- Karen O'Donoghue
- Bill Jensen
- Chris Elliot
- Joel Jaeggli
- Hans Kuhn
- Lucy Lynch
- Bill Fenner
- Alexis Hildebrandt

### External Aggregate Traffic

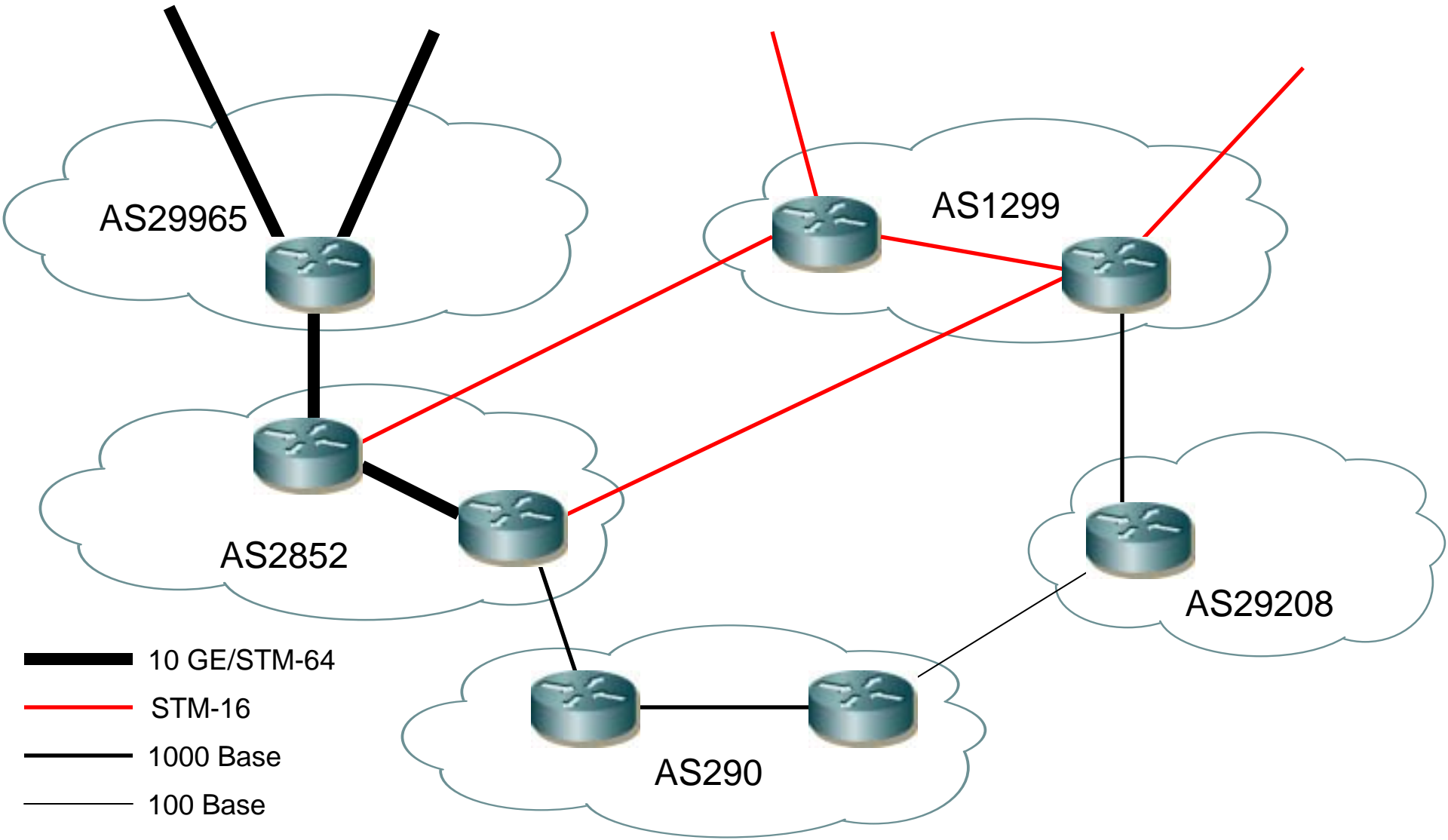


RRDTOOL / TOBI OETIKER

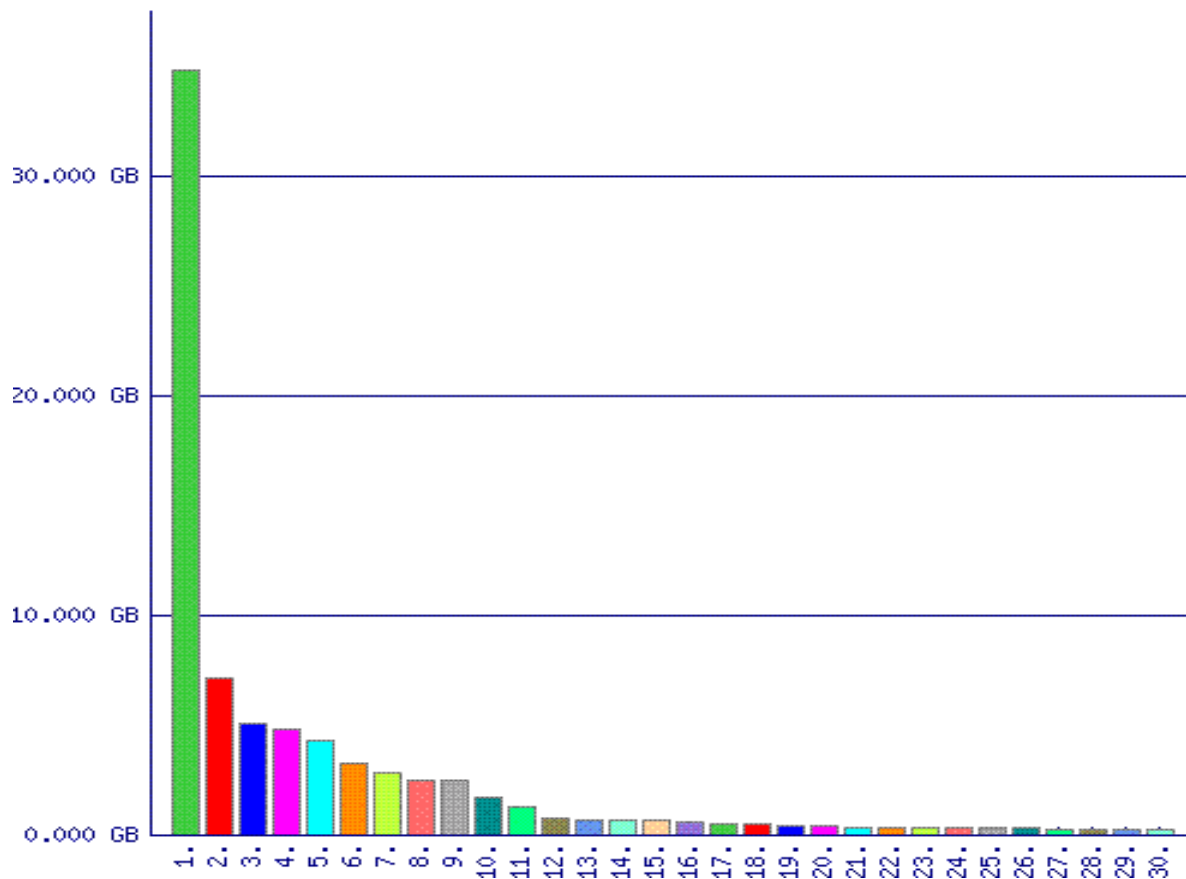
From 2007/03/20 12:05:52 To 2007/03/21 12:05:52

|                  |          |                        |         |
|------------------|----------|------------------------|---------|
| CESNET-Inbound:  | +12.14 M | Dial Telecom-Inbound:  | +489.21 |
| CESNET-Outbound: | -4.11 M  | Dial Telecom-Outbound: | -3.68 k |

# Upstream config



# IP port distribution



| Src-Port    | Protocol | Bytes-estimated |
|-------------|----------|-----------------|
| www (80)    | tcp (6)  | 34.830 GB       |
| 10000       | udp (17) | 7.173 GB        |
| ssh (22)    | tcp (6)  | 5.039 GB        |
| https (443) | tcp (6)  | 4.861 GB        |
| 59350       | esp (50) | 4.267 GB        |
| imaps (993) | tcp (6)  | 3.236 GB        |
| 4500        | udp (17) | 2.801 GB        |
| 5001        | tcp (6)  | 2.463 GB        |
| 55990       | tcp (6)  | 2.455 GB        |
| 16384       | udp (17) | 1.738 GB        |
| rtsp (554)  | tcp (6)  | 1.296 GB        |
| 0           | gre (47) | 0.741 GB        |
| nntp (119)  | tcp (6)  | 0.717 GB        |
| pop3s (995) | tcp (6)  | 0.671 GB        |
| pop3 (110)  | tcp (6)  | 0.663 GB        |

# IP port traffic last day

