

# Context Transfer for Proxy MIPv6

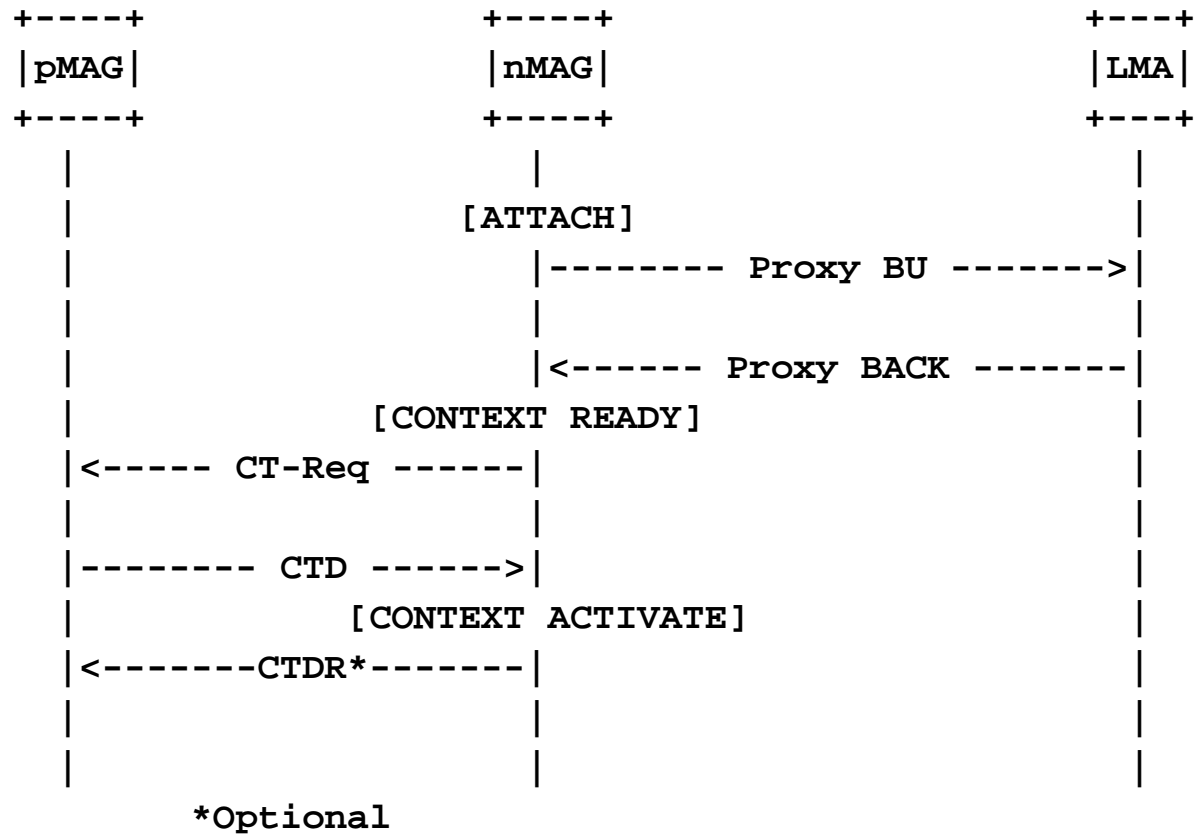
Marco Liebsch, Christian Vogt

NetLMM WG  
IETF#69, Chicago  
24<sup>th</sup> July 2007

# Context Transfer for P-MIPv6

- Based on RFC 4067
- Integration with P-MIPv6
- 3 Degrees of freedom for deployment
  - Reactive or proactive context transfer
  - Initiated by the previous or new MAG
  - Independent entity from which initiating MAG obtains IP address of other MAG

# Example: Reactive Context Transfer



**Here, pMAG's IP address comes from LMA. Can be put into option of Proxy Binding Ack message**

# Context Transfer for P-MIPv6

- Discussion and protocol in

`draft-liebsch-netlmm-proxymip6ct-00.txt`

- Currently available at

`ftp://kyoto.netlab.nec.de/pub/netlmm/draft-liebsch-netlmm-proxymip6ct-00.txt`