

# HTTP Dereference

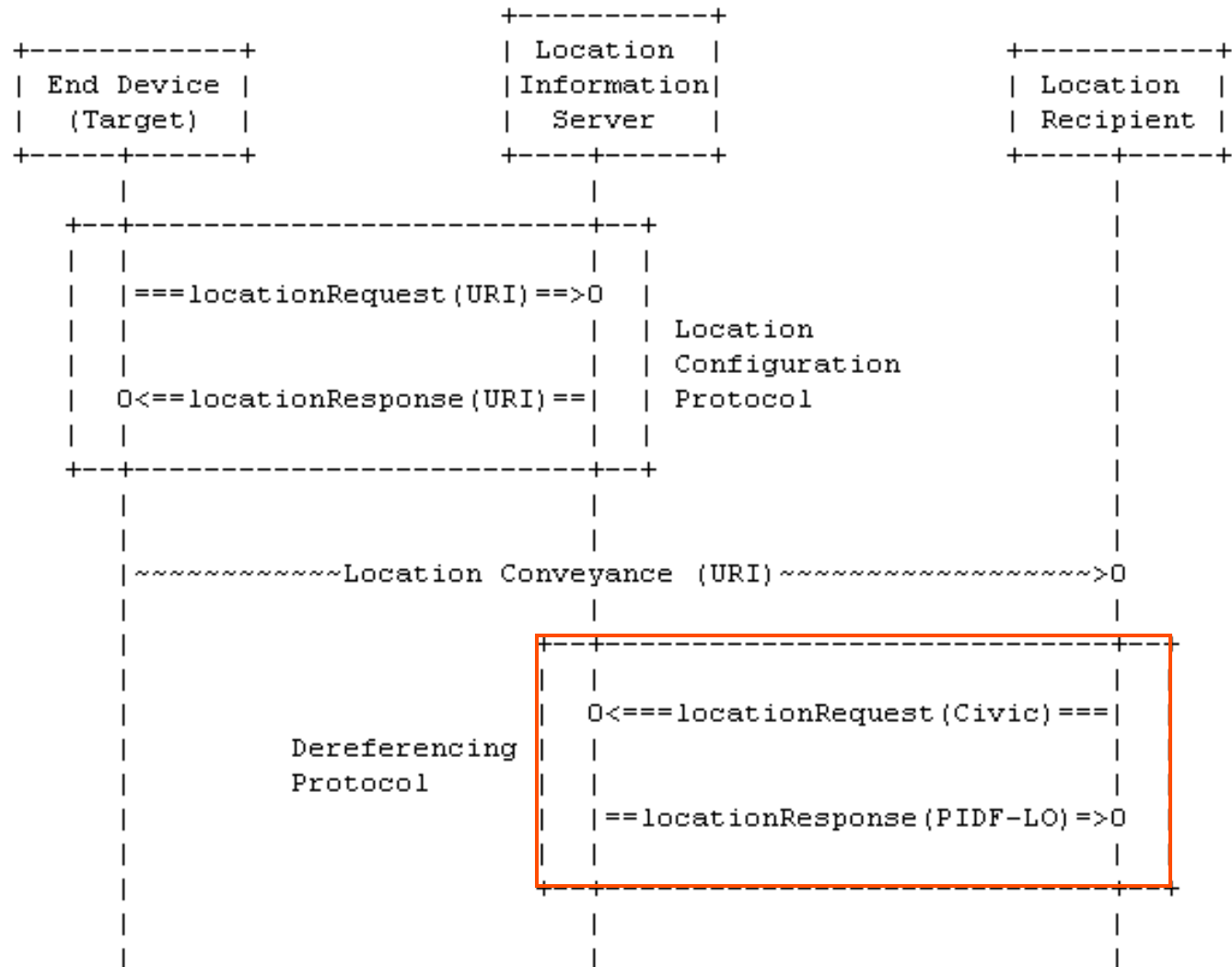
(draft-winterbottom-geopriv-deref-protocol-00)

James Winterbottom  
Hannes Tschofenig  
Henning Schulzrinne  
Martin Thomson  
Martin Dawson

# History

- Two documents presented at IETF-69 in Chicago based on Ted Hardie's HTTP stawman proposal:
  - draft-winterbottom-geopriv-held-deref-bcp-01 described using HELD as a “transfer” protocol.
  - draft-tschofenig-geopriv-http-using-protocol-00 described using HTTP as a “using-protocol”
- WG and authors agreed to combine the documents

# Scope



# Content Description

- Steps for retrieval
  - LR getting and using the Location URI
- Threat models
  - Authorization policy security model
  - End-to-end security model
  - Hop-by-hop security model
- Using HELD as the dereference protocol
- Examples

# Example:

## Minimal Dereferencing Request

```
GET /357yc6s64ceyoiuy5ax3o HTTP/  
1.1 Host: lis.example.com Accept:  
application/held+xml
```

# Example:

## Dereferencing Request for Civic and Geodetic Information

```
<locationRequest
  xmlns="urn:ietf:params:xml:ns:geopriv:held">
  <locationType exact="true">
    civic
    geodetic
  </locationType>
</locationRequest>
```

# Example: Response

```
HTTP/1.x 200 OK
Server: Example LIS
Expires: Tue, 10 Jan 2006 03:49:20 GMT
Content-Type: application/held+xml
Content-Length: XYZ
```

```
<locationResponse xmlns="urn:ietf:params:xml:ns:geopriv:held">
  <presence xmlns="urn:ietf:params:xml:ns:pidf:geopriv10"
    entity="pres:ae3be8585902e2253ce2@10.102.23.9">
    <tuple id="lisLocation">
      <status>
        <geopriv>
          ...
        </geopriv>
      </status>
      <timestamp>2007-05-24T12:35:02+10:00</timestamp>
    </tuple>
  </presence>
</locationResponse>
```

# Requirements

- “Using Protocol” requirements are described in RFC 3693
  - Compliance to these requirements is covered in Appendix A
- Requirements for a dereference protocol are defined in draft-ietf-geopriv-lbyr-requirements
  - Compliance to these requirements is covered in Appendix B