

Realm-Based Routing

draft-ietf-dime-realm-based-redirect-00.txt

Tina Tsou <tena@huawei.com>
Tom Taylor <tom.taylor@rogers.com>

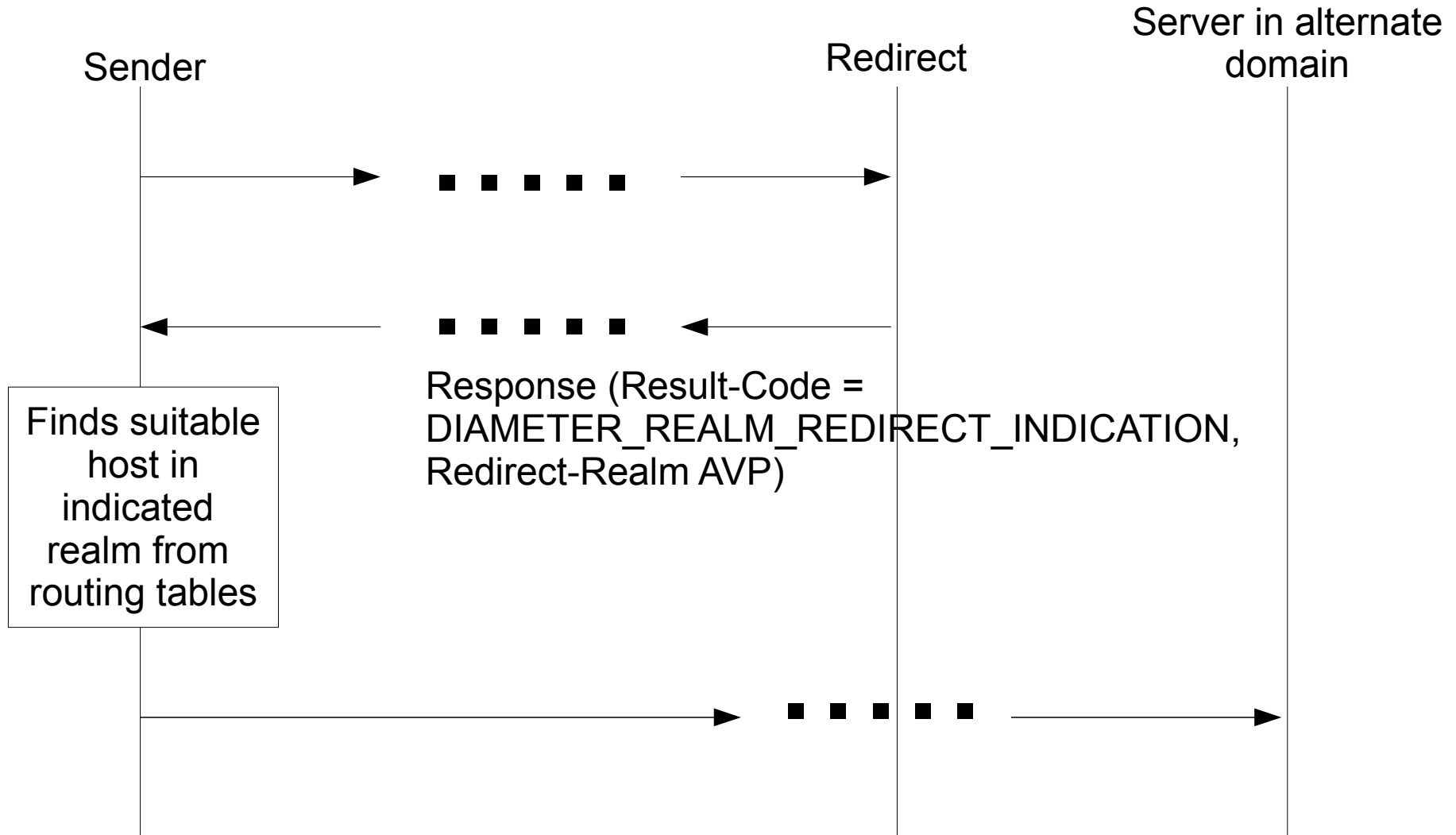
Background

- draft-tsou-dime-realm-based-redirect-00 submitted June 11.
- Several comments on solution.
- draft-tsou-dime-realm-based-redirect-01 submitted July 14.
- Comments addressed by changes (see next chart).
- Agreed as WG work item, draft-ietf-dime-realm-based-redirect-00 submitted yesterday with no changes.

Changes from tsou-00 to tsou-01

- Introduced new error return code to solve backward compatibility problem
 - eliminates requirement for redirecting agent to know individual host identity in alternate domain.
- Deleted the "Considerations" section and went straight to a specification of the solution.
- Added security considerations.

Flow When Feature Supported



Flow When Feature Unsupported

