

# Port Mapping Between Ucast/Mcast RTP Sessions

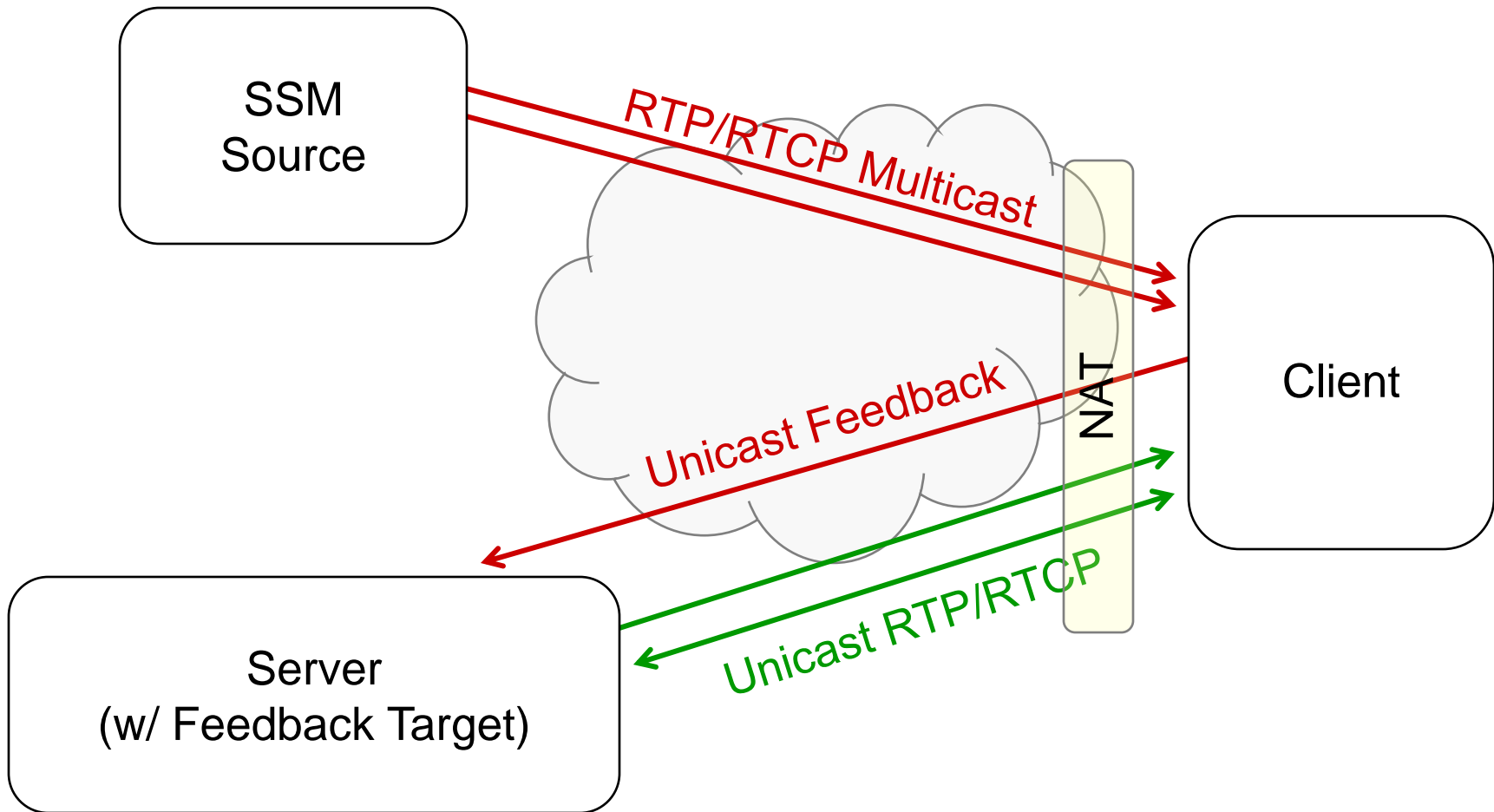
draft-ietf-avt-ports-for-ucast-mcast-rtp-00

IETF 77 – March 2010

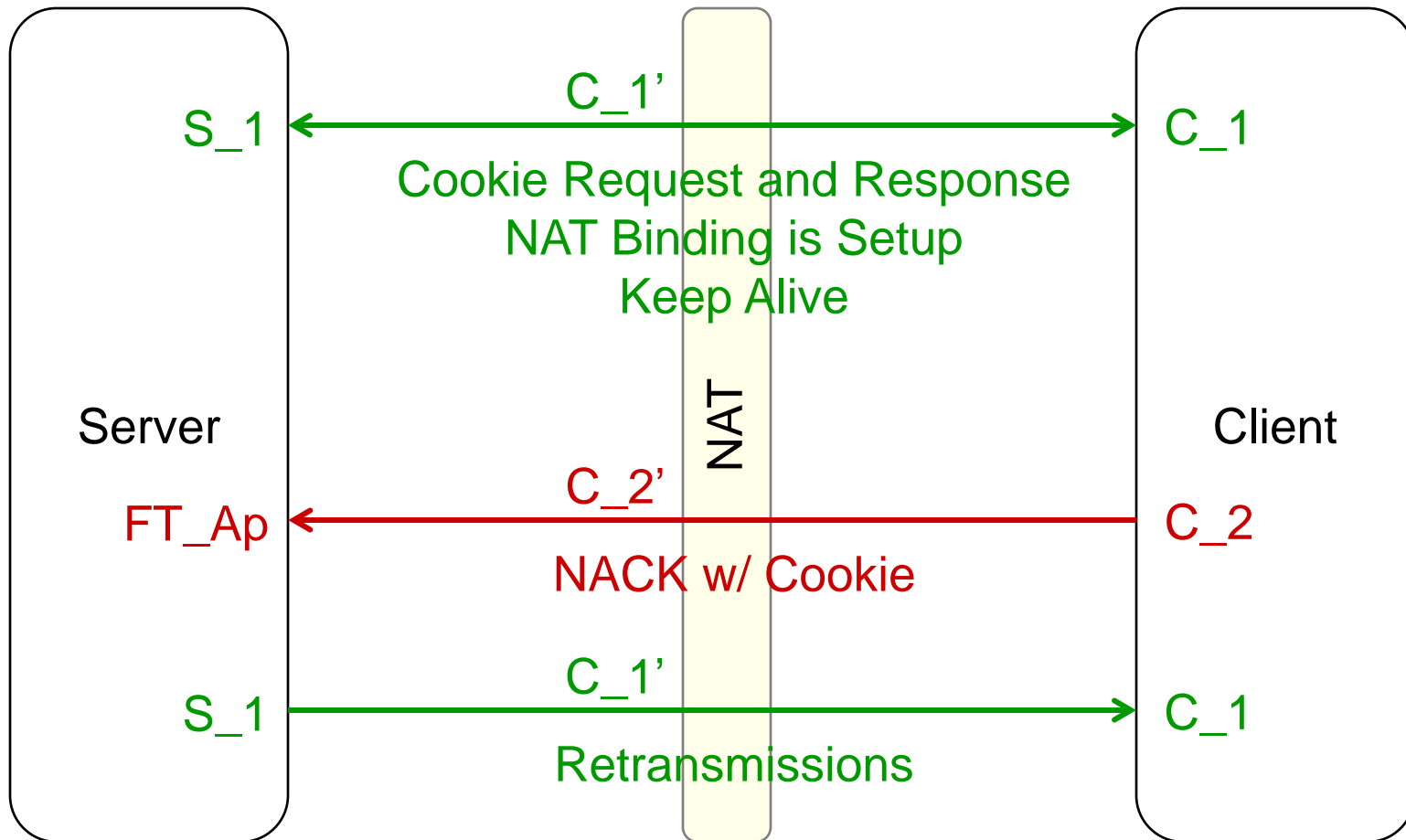
**Ali C. Begen and Bill Ver Steeg**

**{abegen, billvs}@cisco.com**

# Example: SSM + Unicast Retransmissions



# If Server and Client Support RTP/RTCP Muxing



C\_1 and C\_2 are chosen by the client and could be the same port

# SDP Example

a=group:FID 1 2

Multicast RTP port

m=video 41000 RTP/AVPF 98

i=Primary Multicast Stream

c=IN IP4 233.252.0.2/255

Multicast group address

a=source-filter: incl IN IP4 233.252.0.2 192.0.2.2

a=rtpmap:98 MP2T/90000

Source address

a=rtcp:42000 IN IP4 192.0.2.1

a=rtcp-fb:98 nack

Server (Feedback target)

a=mid:1

m=video 51000 RTP/AVPF 99

i=Unicast Retransmission Stream

c=IN IP4 192.0.2.1

RTCP port on the server

a=rtpmap:99 rtx/90000

a=rtcp-mux

a=fmtp:99 apt=98; rtx-time=5000

S\_1 (RTP/RTCP port on the server for the unicast session)

a=mid:2

# Open Issues

- Decide on the port mapping method
- Decide on the keep-alive method
- Develop a section explaining cookie generation
- Show examples (with SDPs) how the method works for
  - Unicast retransmissions
  - RAMS