

# TRILL: ESADI Protocol

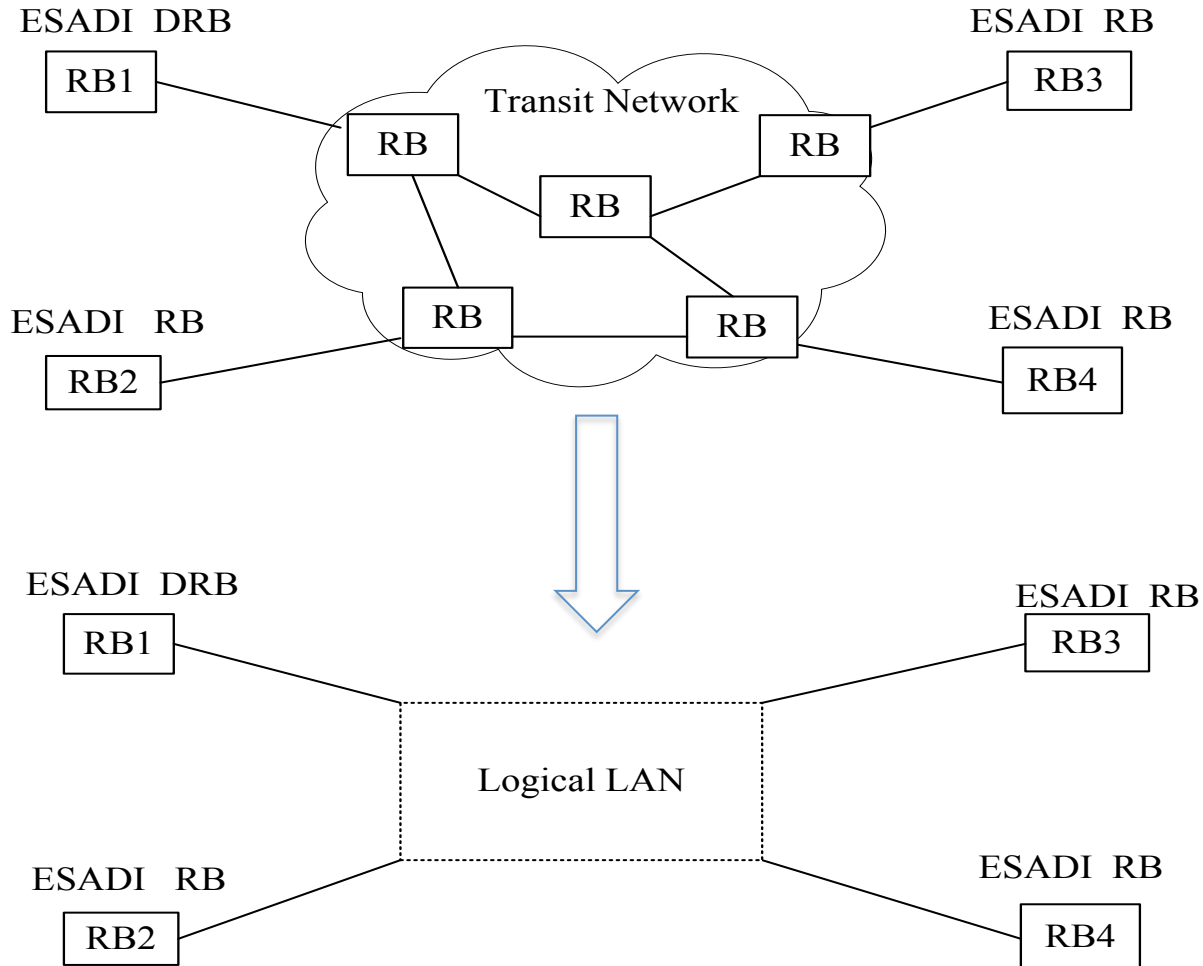
## draft-hu-trill-rbridge-esadi-03.txt

Fangwei Hu	<a href="mailto:hu.fangwei@zte.com.cn">hu.fangwei@zte.com.cn</a>
Hongjun Zhai	<a href="mailto:zhai.hongjun@zte.com.cn">zhai.hongjun@zte.com.cn</a>
Donald Eastlake 3rd	<a href="mailto:d3e3e3@gmail.com">d3e3e3@gmail.com</a>
Radia Perlman	<a href="mailto:Radia@alum.mit.edu">Radia@alum.mit.edu</a>

# TRILL: ESADI

- improve the robust and reliability of TRILL protocol
  - MAC address reachability information and ESADI parameters are carried in ESADI frames rather than in the TRILL IS-IS protocol
  - End station attachment information is not flooded to all RBridges through TRILL IS-IS but only to ESADI RBridges
- Improve the ESADI protocol
  - ESADI DRB state
  - Multicast storm avoiding
  - EADI Parameter appsub-TLV

# ESADI Structure



# ESADI DRB

- ESADI DRB: multicasts ESADI CSNP periodically to keep the LSDB synchronized among the virtual link
- ESADI DRB Election:
  - Candidates : Data and ISIS reachable, participating in ESADI by announcing in their ISIS LSP, having the entry of ESADI-LSP number zero with an ESADI Parameters APPsub-TLV.
  - According to the ESADI Parameter 7-bit priority field ,and ties broken by System ID(The larger, the higher priority)

# Multicast Storm avoiding

- Change multicast frame to unicast frame in some situation
  - Waiting for a interval time before sending LSP to a new neighbor
  - Receiving an old ESADI-LSP, unicast the local LSP entry to the sender
- All the ESADI RBridges only send their self-originated LSPs

# ESADI PDU

- ESADI PDU: level 1 EASDI-LSP, EASDI-CSNP and EASDI-PSNP PDUs
- No hello or MTU PDU: does not build topology and does not do any routing
- ESADI LSP:
  - ESADI parameter APPsub-TLV
  - MAC Reachability TLV (specified in RFC6165)

# Next Steps

- Feedback and comments
- WG Adoption

**END**