

RADIUS Option for DHCPv6 Relay Agents on Broadband Access Server

draft-ietf-dhc-dhcpv6-radius-opt-00/01

(updated from draft-yeh-dhc-dhcpv6-authorization-opt-00)

IETF 84 – DHC
Jul. 31st, 2012

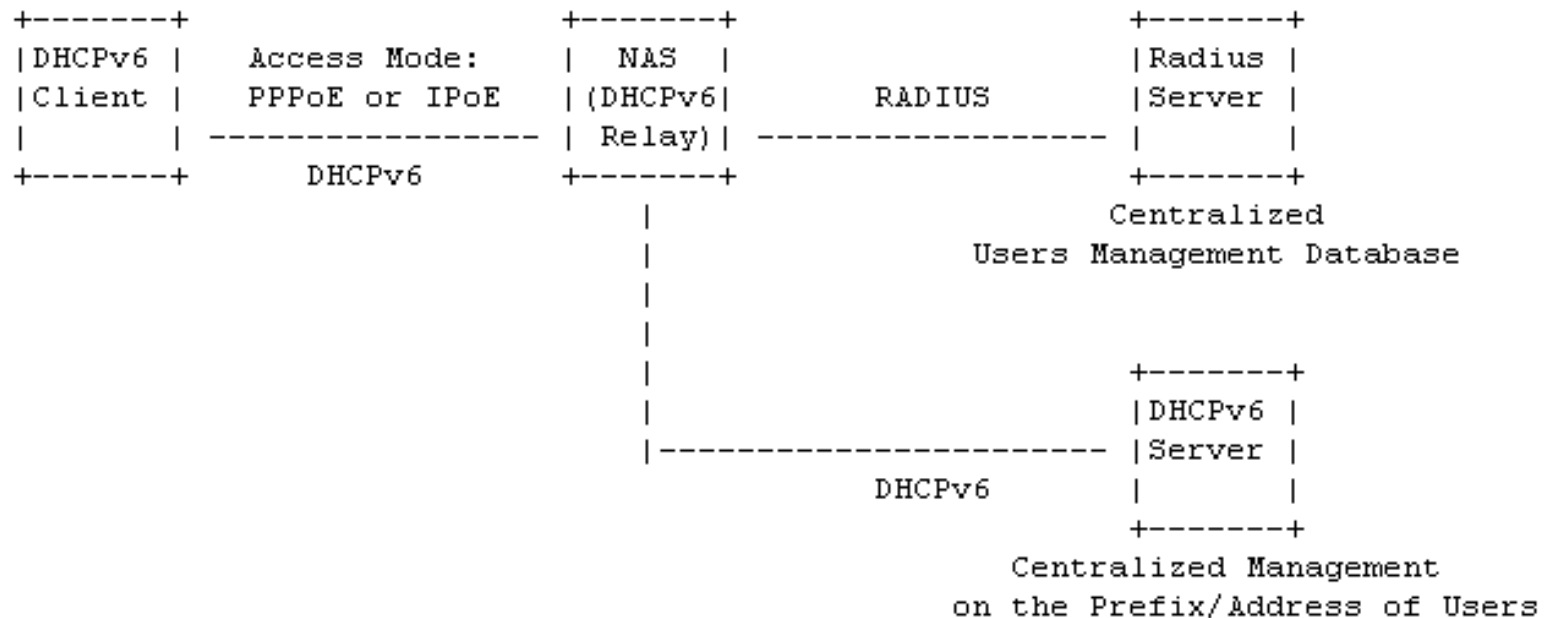
Ted Lemon Nominum, Inc

Leaf Yeh Huawei Technologies

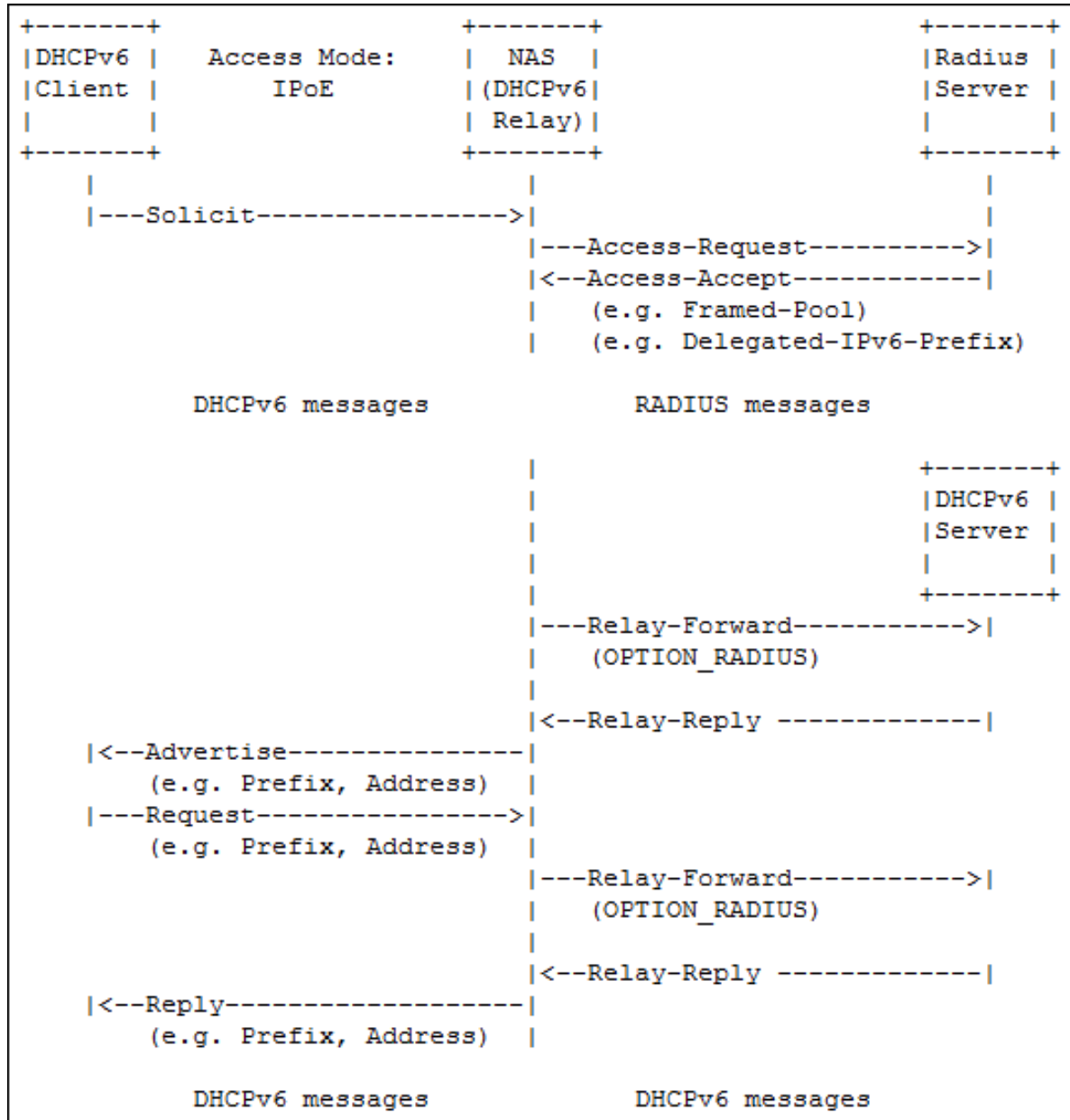
Mohamed Boucadair France Telecom

Network Scenario & Requirements

- Centralized RADIUS Server, which is associated with the User Management database on AAA;
- Centralized DHCPv6 Server, which is only responsible for the prefix/address assignment for users;
- DHCPv6 Server are not necessary to locate at the same place to share the same user database with RADIUS server.



Message Sequences in the case of IPoE



Proposal for Next Step

- a. WG LC now?
- b. Or wait for the RFC publication of ietf-radext-ipv6-access?

Q & A ?!