

Hybrid Measurement using IPPM Metrics

draft-trammell-ippm-hybrid-ps-00

Brian Trammell <trammell@tik.ee.ethz.ch>

IPPM – IETF 85 – Atlanta – 6 November 2012

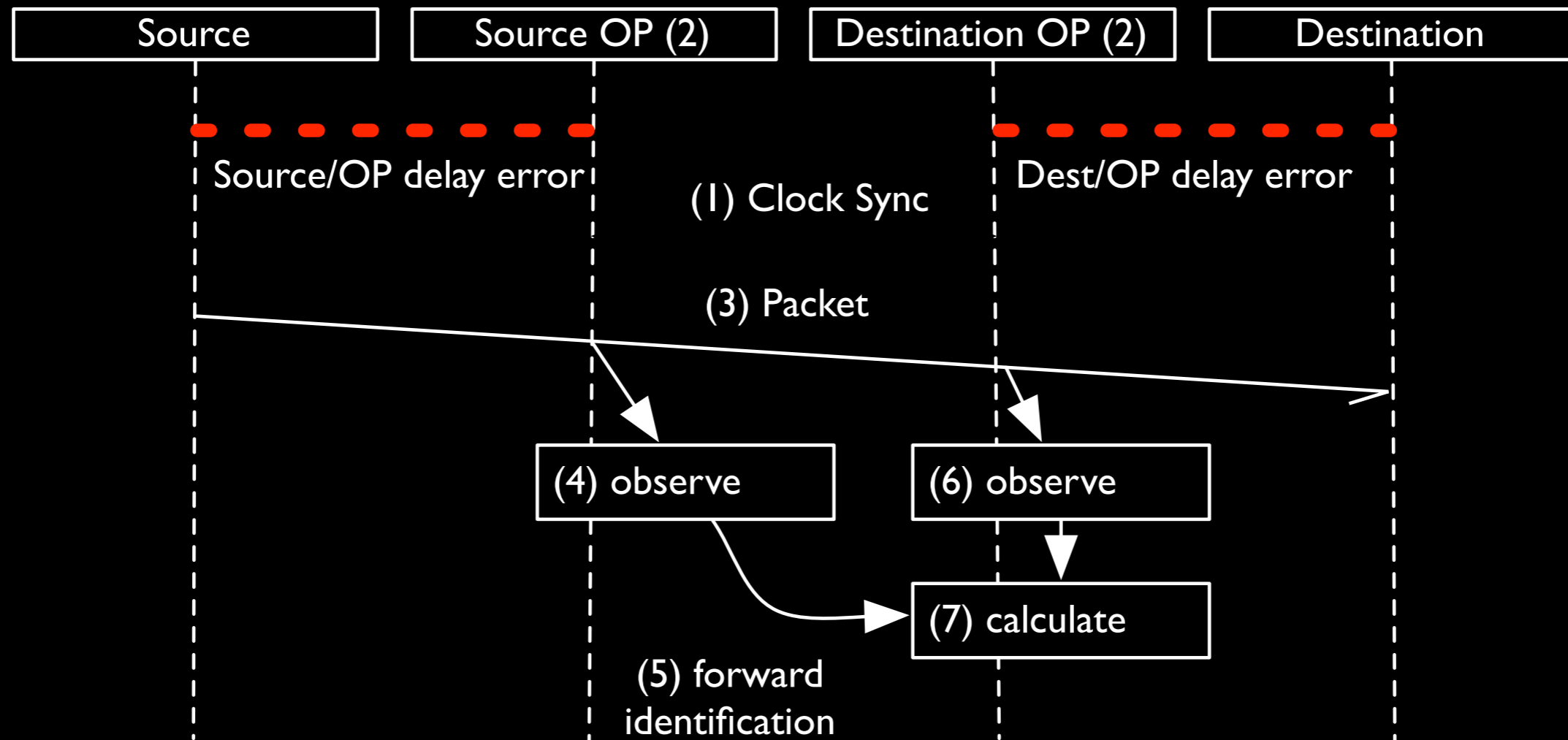
Hybrid?

- Temporal or spatial combination of passive and active measurements of a given metric (“combined hybrid”)
- Passive observation of active measurement traffic (“concurrent hybrid”), per Fabio Ricciato.
- -00 revision addresses only combined hybrid, future revisions may address both.

Requirements for Specification

- Definition of reference scenarios
- Selection of existing IPPM metrics
- Definition of passive methodologies compatible with existing active methodologies for each metric
- Comparison and combination must support *known or estimated* uncertainty

Passive OWD example



Candidate scenarios

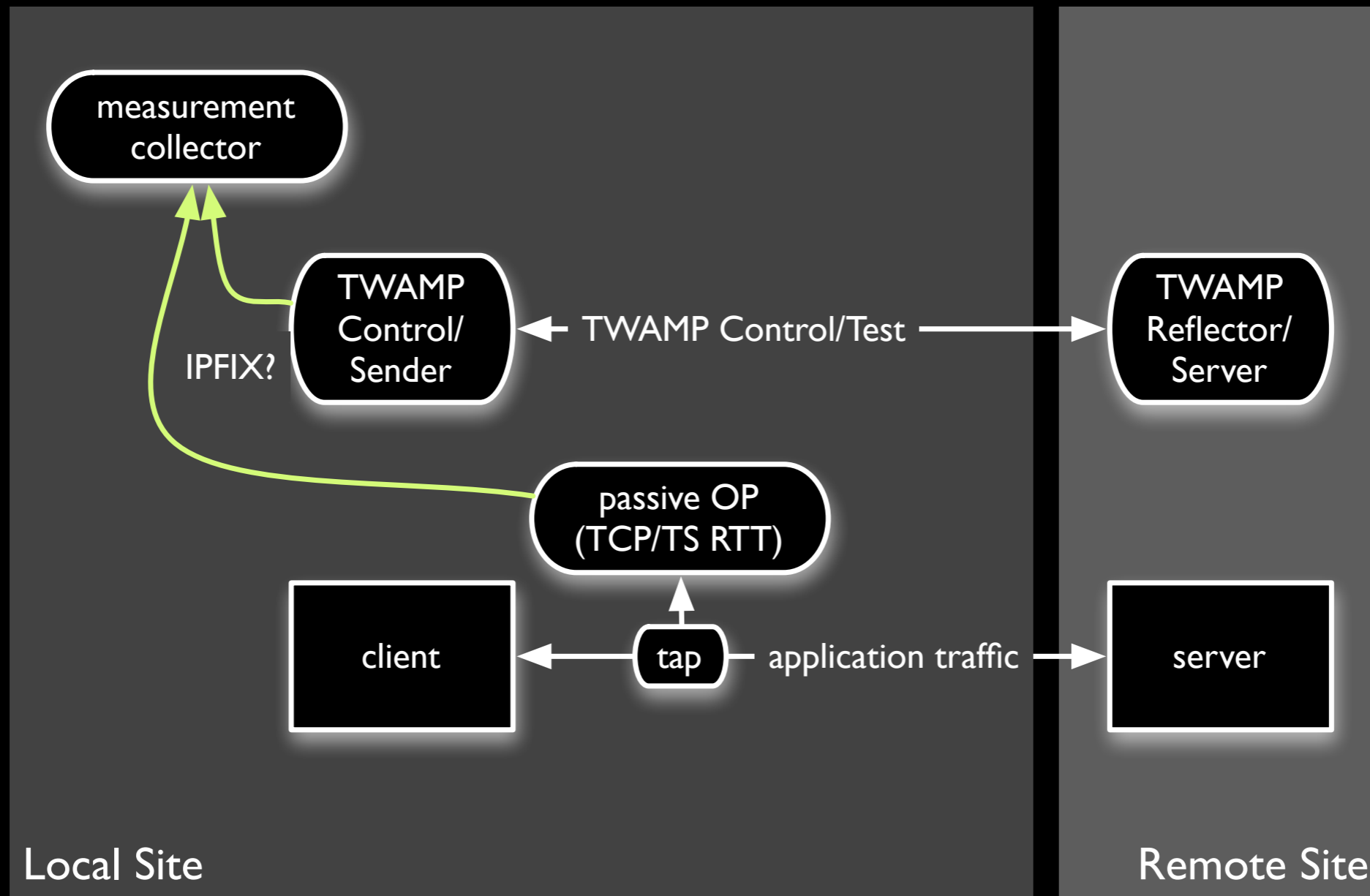
- Active comparison to passive baseline for loss and delay
- Passive measurement of common paths supplemented with active measurement for uncommon paths
- Potential overlap with LMAP effort

IPFIX for IPPM

(future draft)

- Passive measurement requires an event-driven data export protocol.
- IP Flow* Information Export
 - asynchronous templated export
 - rich element set for network data
- Definition of IPFIX IEs for IPPM metrics?

Combined Hybrid example deployment



Discussion

- Work is just getting started...
- *please* comment on the list or mail trammell@tik.ee.ethz.ch to participate!