

PPSP Extended Tracker Protocol (PPSP-TP/1.1)

draft-huang-ppsp-extended-tracker-protocol-01

PPSP WG

IETF 85 Atlanta

Rachel Huang

Rui Cruz, Mário Nunes,
João Taveira

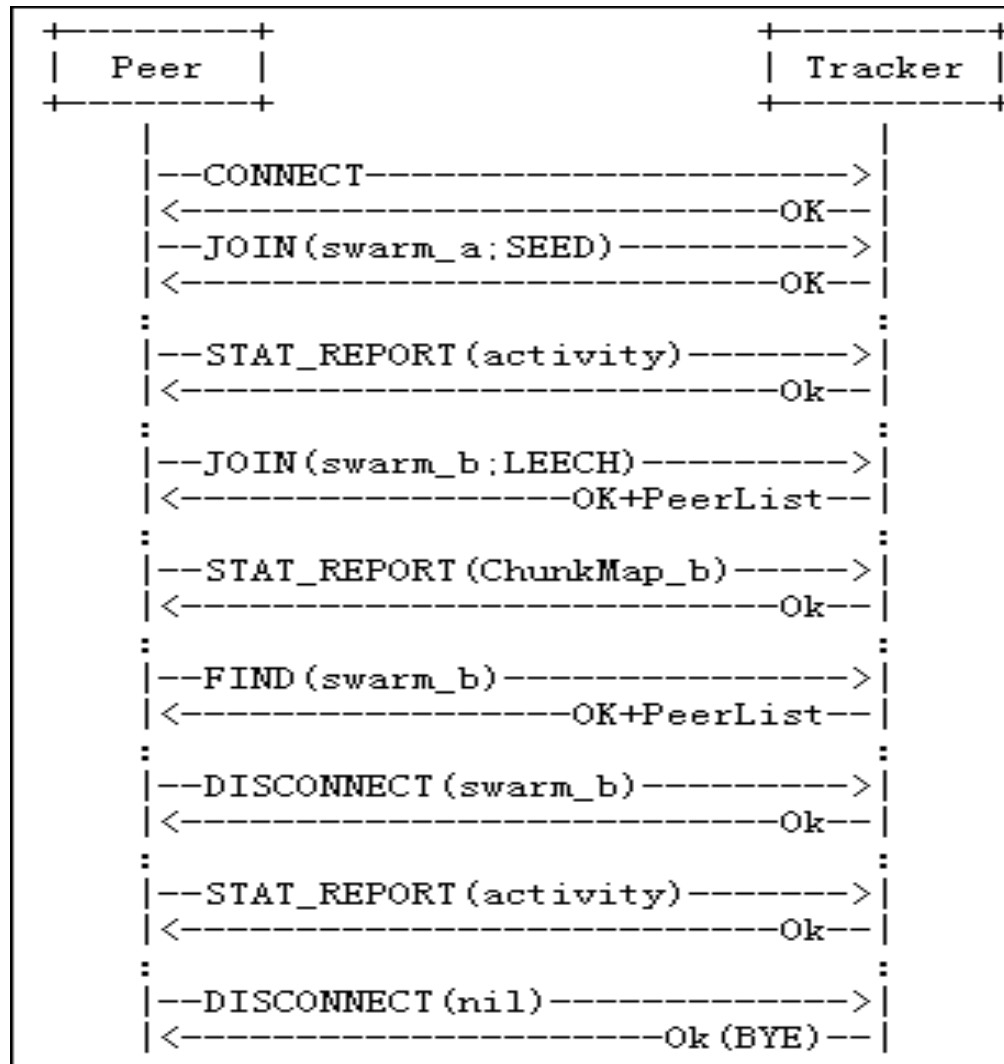
A Recap of PPSP-TP/1.1

- Enhancing messages from PPSP-TP/1.0
 - Enhanced CONNECT message: registration and fast connection.
 - Enhanced STAT_REPORT message: content information
- 3 optional messages
 - JOIN: participate in one or multiple swarms of peers to stream contents
 - DISCONNECT: leave one, or multiple, or all swarms, or the system
 - FIND: obtain the peer list for the swarm or for specific chunks of a content for swarms already joined
- Retro-compatible with PPSP-TP/1.0
 - Peer and tracker could implement different versions of PPSP-TP.
 - If tracker implements PPSP-TP/1.0 while peer implements PPSP-TP/1.1, the request of peer should fallback to PPSP-TP/1.0
- Consistent with the architecture of the base tracker protocol (PPSP-TP/1.0)
 - No special issues exist

Updates since Last Version

- Added an example of session for messages of PPSP-TP/1.1 (present in the next slide)
- Added a new attribute, `@peerProtocol`, to `PeerAddress` in `PeerGroup`.
 - Let peer know the peer protocol version of remote peers whom it wishes to connect to
- Make `PeerGroup` not mandatory in request messages
 - Peer may only has one interface and is behind a NAT
 - The information on IP addresses of peers **MUST** be present in the tracker responses.
- Other editorial changes.

Example of a Session for PPSP-TP/1.1



Next Step

- Adoption as a new work item?
- Question?

THANK YOU !