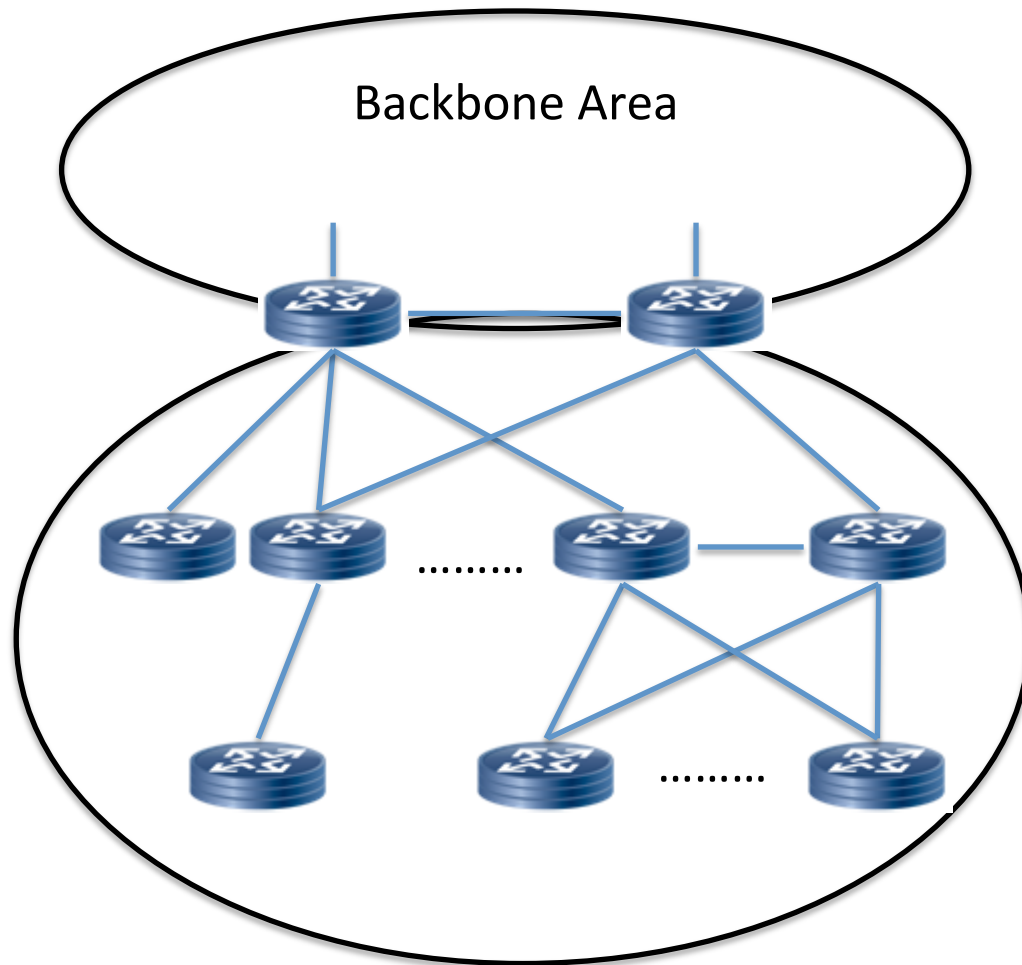


OSPF Extensions for Link State Database Synchronization Group draft-ylz-ospf-lsdb-sync-group-00

Gang Yan, Yuanjiao Liu, Xudong Zhang
Huawei Technologies

IETF 86, Orlando, FL, USA

Background Introduction

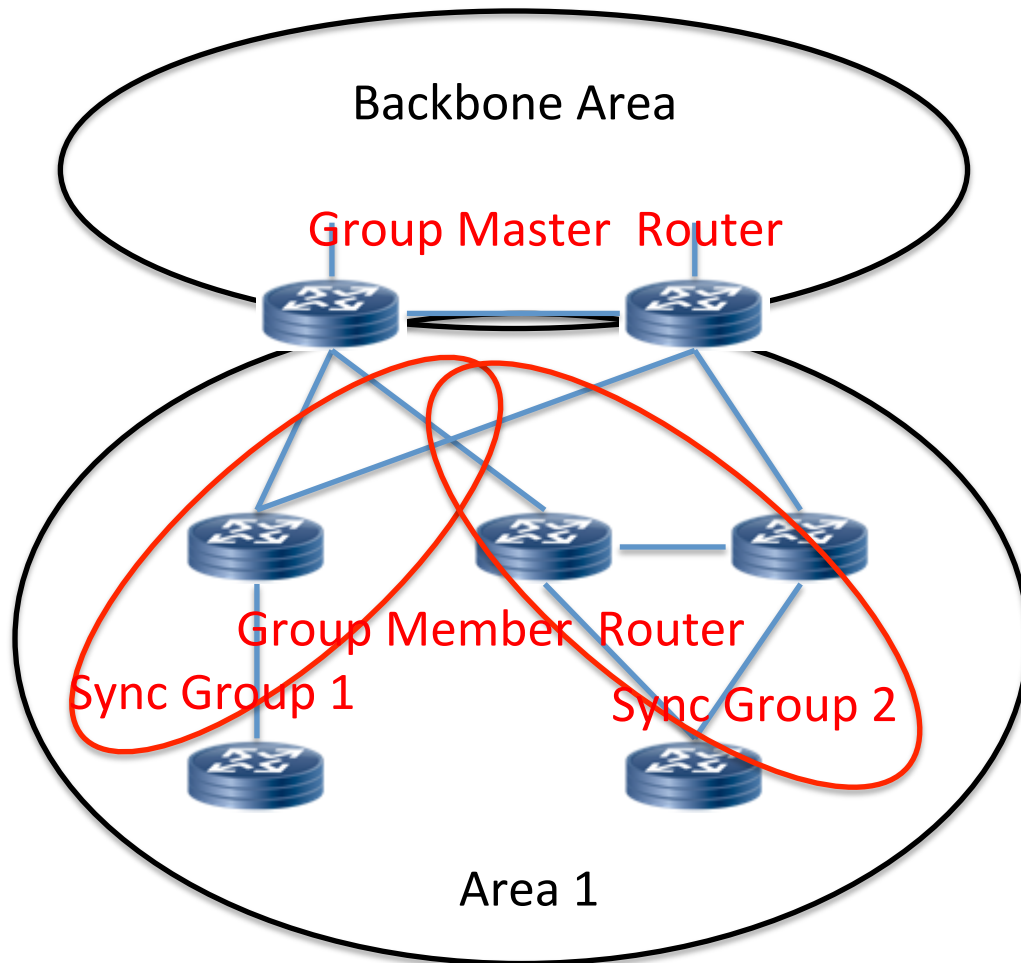


- Devices of access layer have the following characteristics:
 - ✓ Huge devices.
 - ✓ Performance is not enough to support the big LSDB and the big routing table.

Cost of System

- Access Device
 - ✓ Poor CPU and Less Memory.
 - ✓ Can not support many routes.
 - ✓ Can not process many flooding packets.
- Aggregate Device
 - ✓ 500 – 1000 peers or more.
 - ✓ Too many flooding process.
 - Stability of neighbor
 - Convergence time
- Multiple Area?
 - ✓ Is it ABR router? Schedule Problem?
 - ✓ SPF schedule, Summary LSA generate and Route aggregate.

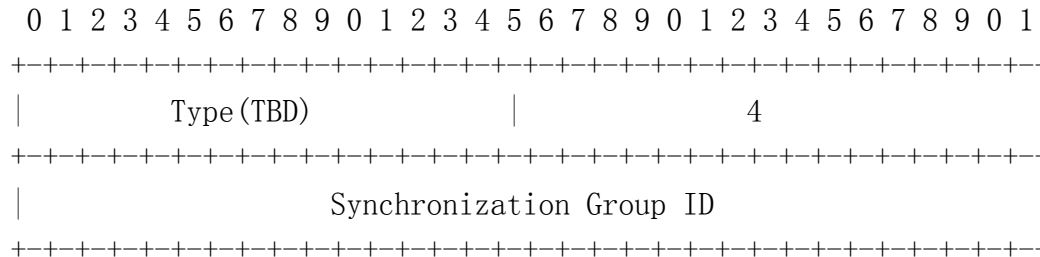
Method: Sync Group



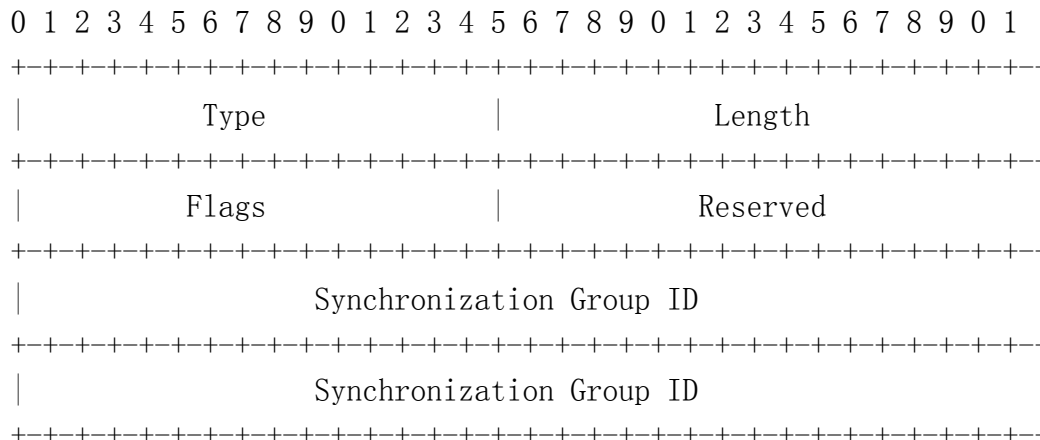
- Goal: Reduce the usage of CPU/ Memory of the access device and traffic of flooding.
- Sync Group = Area in Area.
- The adjacency only is made between the routers with same group ID.
- The LSDB will be synchronized within Sync Group only.
- The “Group Member Router” will add the default route to the nearest “Group Master Router”.
- The LLS is used to indicate the router support SYNC GROUP.
- The RI LSA is used to identify the “Group Master Router”.

OSPF extension

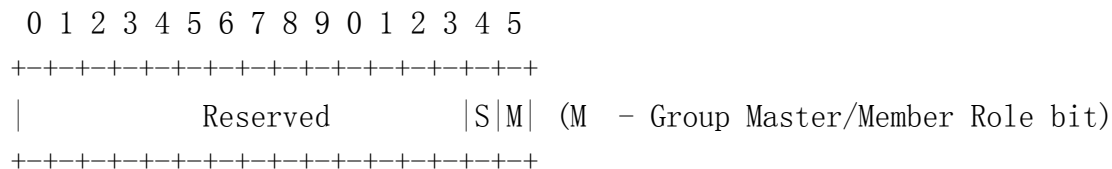
- New TLV will be added to LLS.



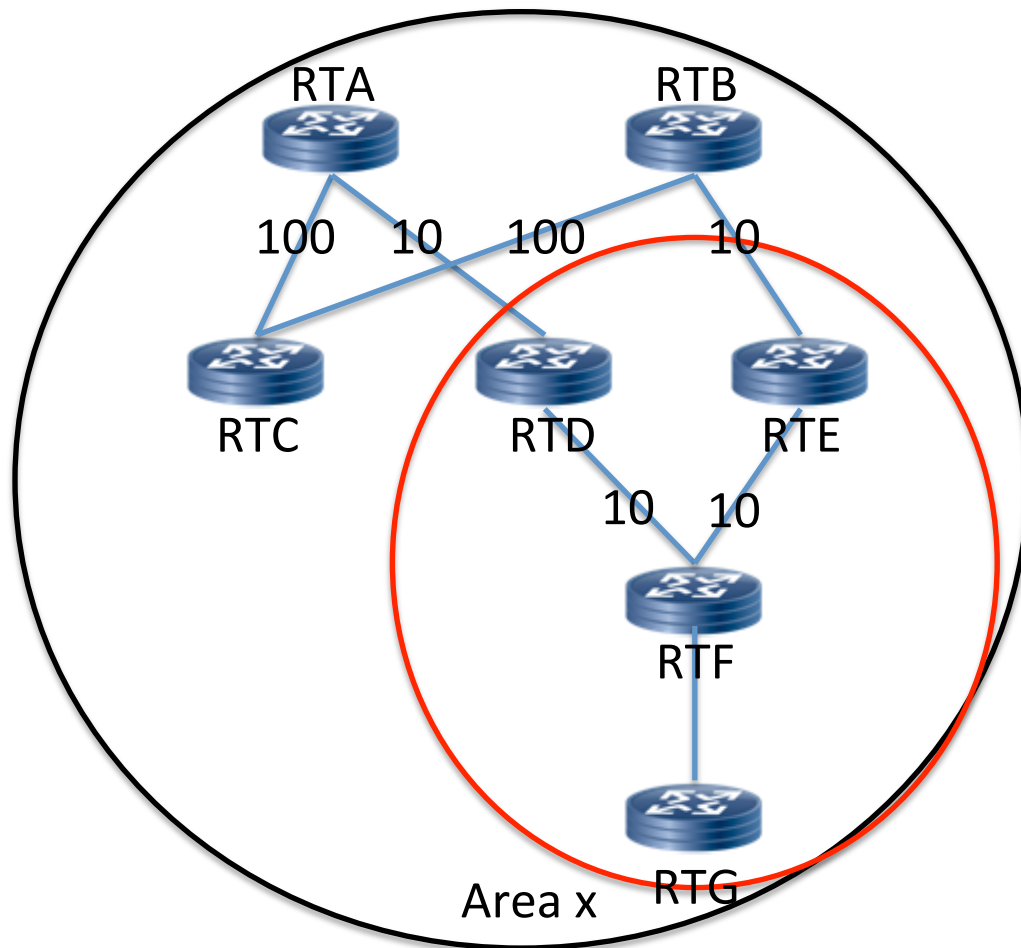
- New TLV in Router Information LSA



Flags (2 octet):



Challenge: Inconsistency of LSDB



- There exists inconsistency!
- The path from RTA to RTB?
 - RTA to RTC to RTB?
 - RTA to RTD to RTF to RTE to RTB?
 - How to avoid the route loop?
- Method 1: Routing calculation of RTA/RTB/RTC (The router is not in SYNC group) are modified to avoid the path through the SYNC group.
- Method 2: Update the router LSA of “Group Master Router” to remove the link to “Group Member Router”. And associated SPF process also need be updated.

Next Steps

- Keep on research to get final solution about path calculation.
- Welcome comments on mailing list.