

RSVP-TE Path Diversity using Exclude Routes

draft-ietf-ccamp-lsp-diversity-02.txt

Zafar Ali

Cisco Systems

George Swallow

Cisco Systems – Presenter

Clarence Filsfils

Cisco Systems

Ori Gerstel

Cisco Systems

Matt Hartley

Cisco Systems

Kenji Kumaki

KDDI Corporation

Rüdiger Kunze

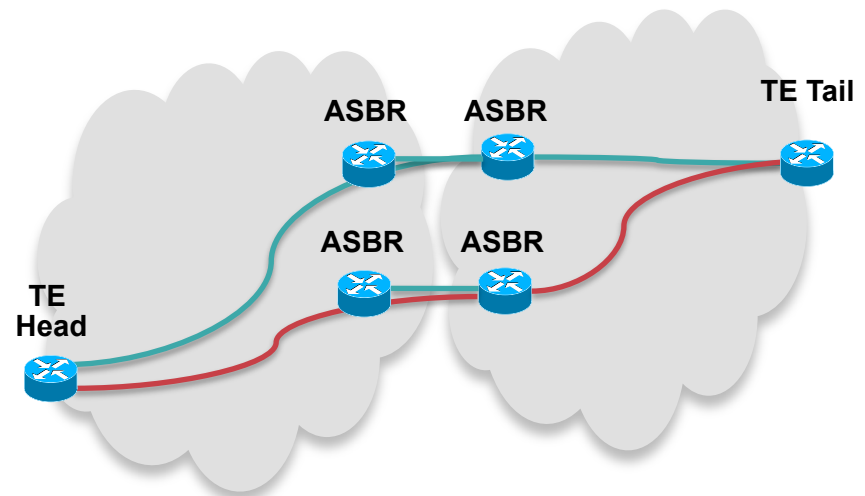
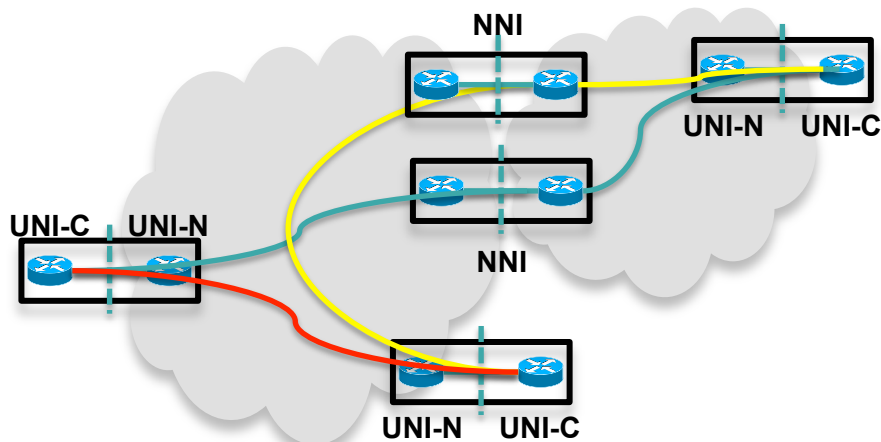
Deutsche Telekom AG

Julien Meuric

France Telecom Orange

Overall Problem Space

- Between areas, ASes, across UNIs and NNIs, visibility of TE Database information is limited
- The aim is to allow path diversity across such boundaries, while respecting that not information can or will be shared
- This draft pertains especially to boundaries where policy limits information flow
- E.g. at a UNI where the operator limits visibility into the network



Changes and History of the draft

- The draft was first presented (as an individual contribution) at 83rd IETF in March 2012
- One major rewrite with only minor technical changes
- Have addressed all comments received from the working group
- Authors now consider draft to be stable

Next Steps



- We would like to request WG Last Call