

CoAP Implementation Guidance

draft-kovatsch-lwig-coap-01

Kovatsch, Bergmann, Dijk, He,
Bormann (Ed.)

Merged Different Draft Snippets

- draft-ietf-lwig-guidance
- draft-kovatsch-lwig-class1-coap
(Low-power Wireless moved to draft-hex-lwig-energy-efficient)
- FSMs based on work by A. Castellani
(<http://www.ietf.org/mail-archive/web/core/current/msg02896.html>)

Keeping separate cellular-centric document

- draft-arkko-lwig-cellular

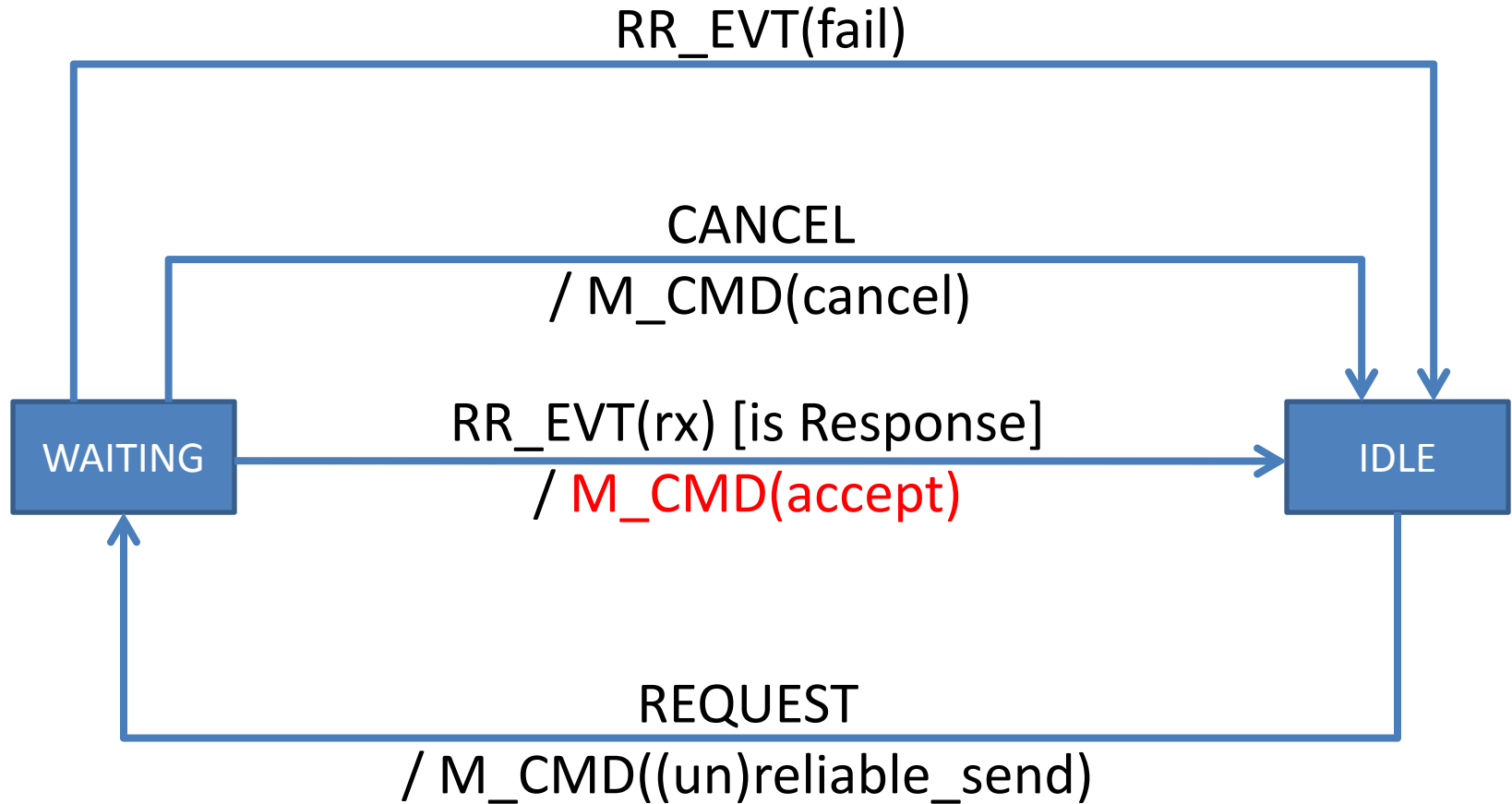
Next Steps

- Restructure and make text consistent
- Validate re-write with original authors
- Add guidance on updated Observe and Block
- Elaborate on finite state machines (FSMs)

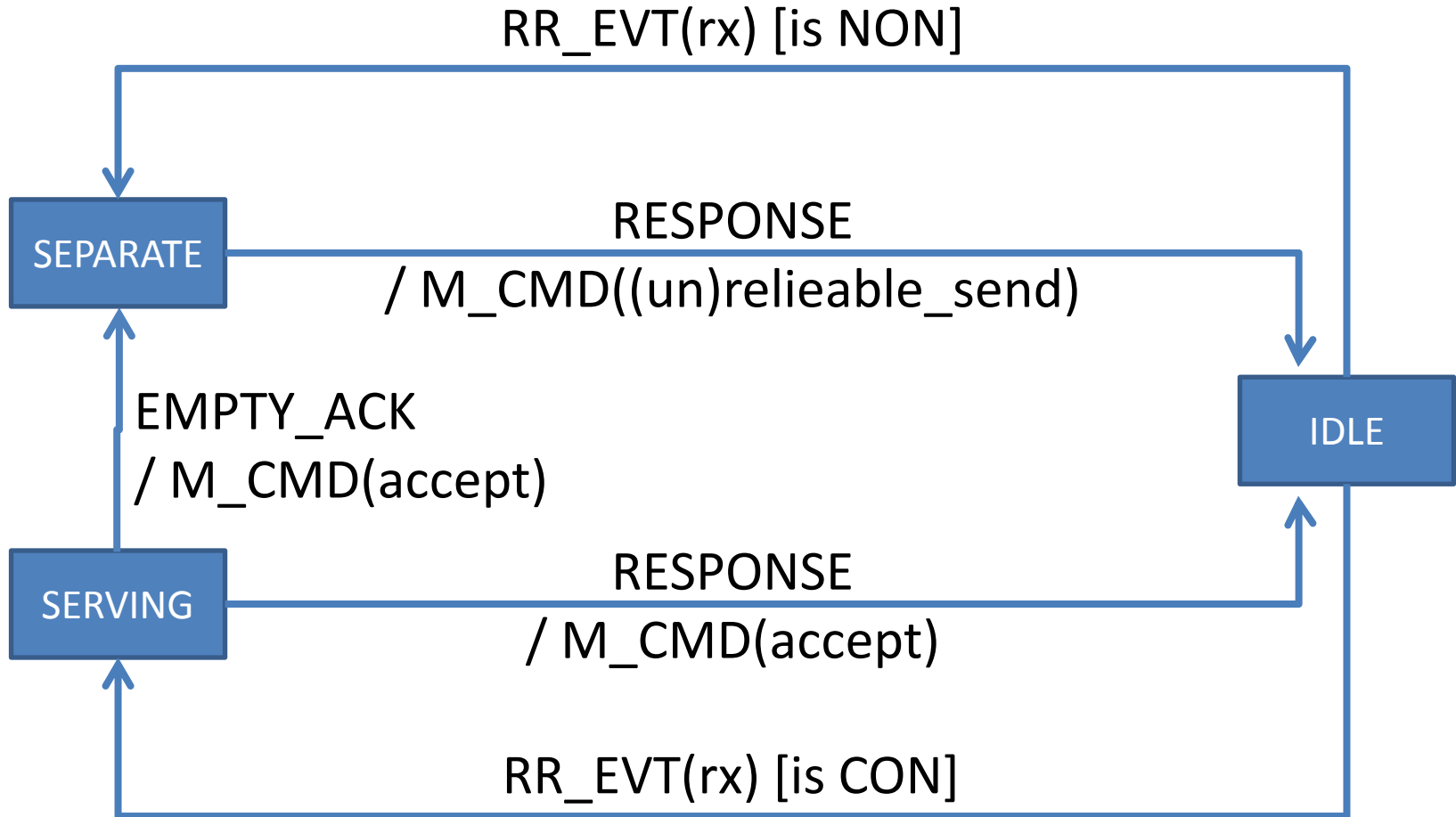
Finite State Machines (FSMs)

- One FSM for Request/Response layer
 - Client
 - Server
- One FSM for Message layer
- Linked through actions
 - M_CMD(): Trigger transition in Message layer
 - RR_EVT(): Trigger transition in R/R layer
- Using guard conditions to reduce no. of states

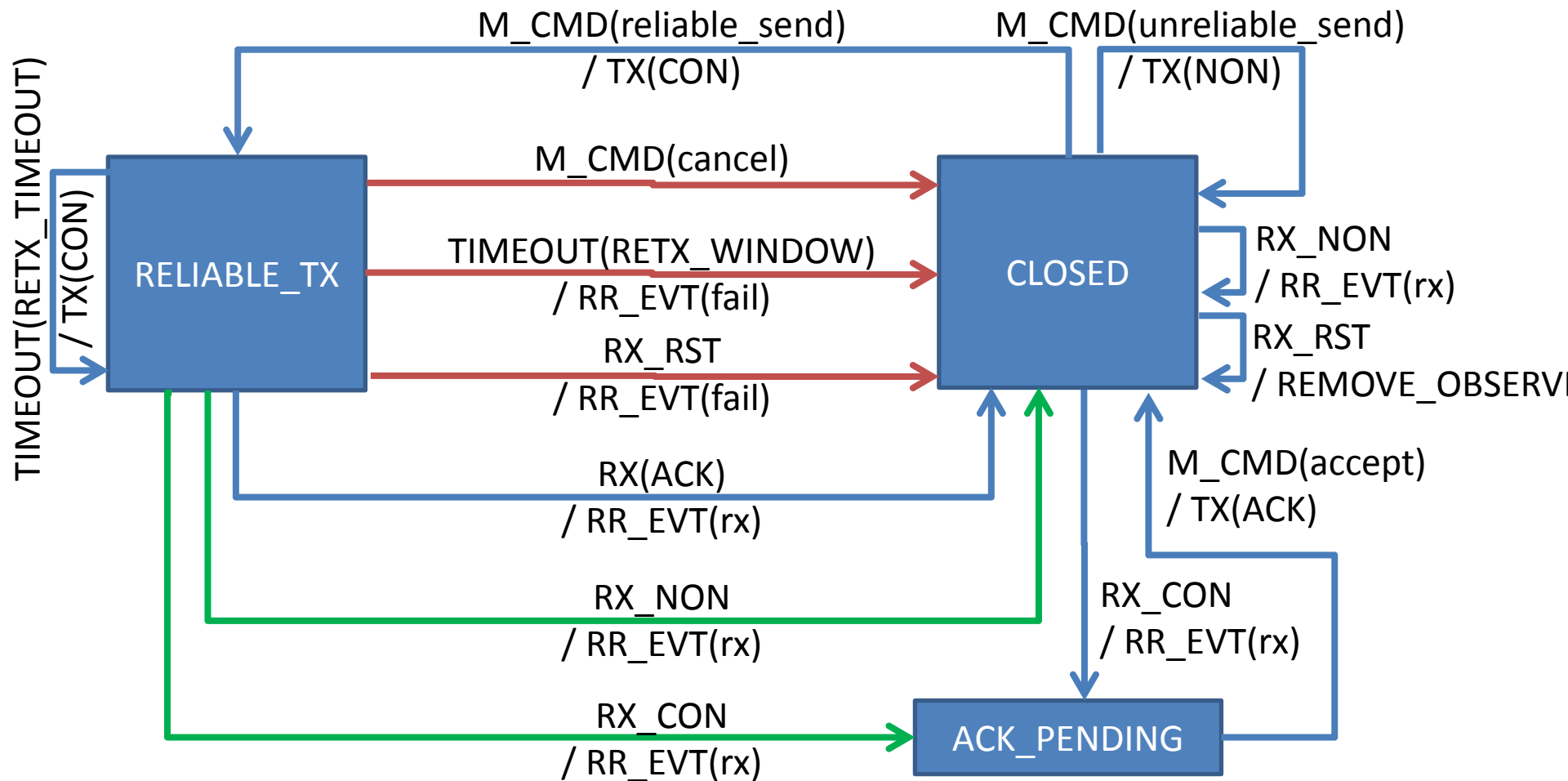
Request/Response Layer: Client



Request/Response Layer: Server

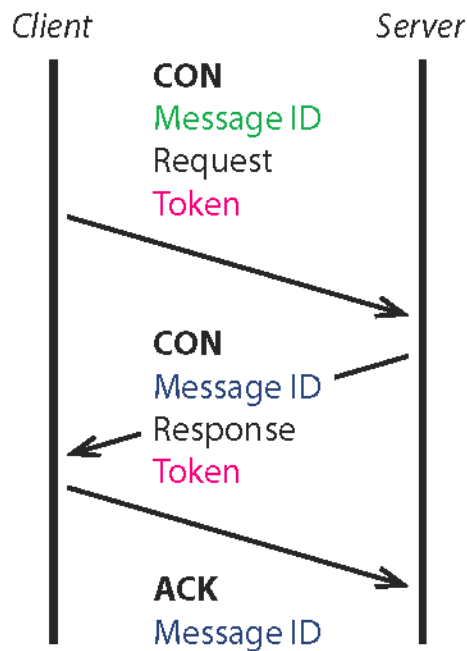


Message Layer



Examples of Special Cases

e.g., implicit acknowledgement



Continue with FSMs?

- Helpful?
- Style understandable?
- FSM examples in other RFCs?

Thanks He Xuan for taking care of the ASCII art!