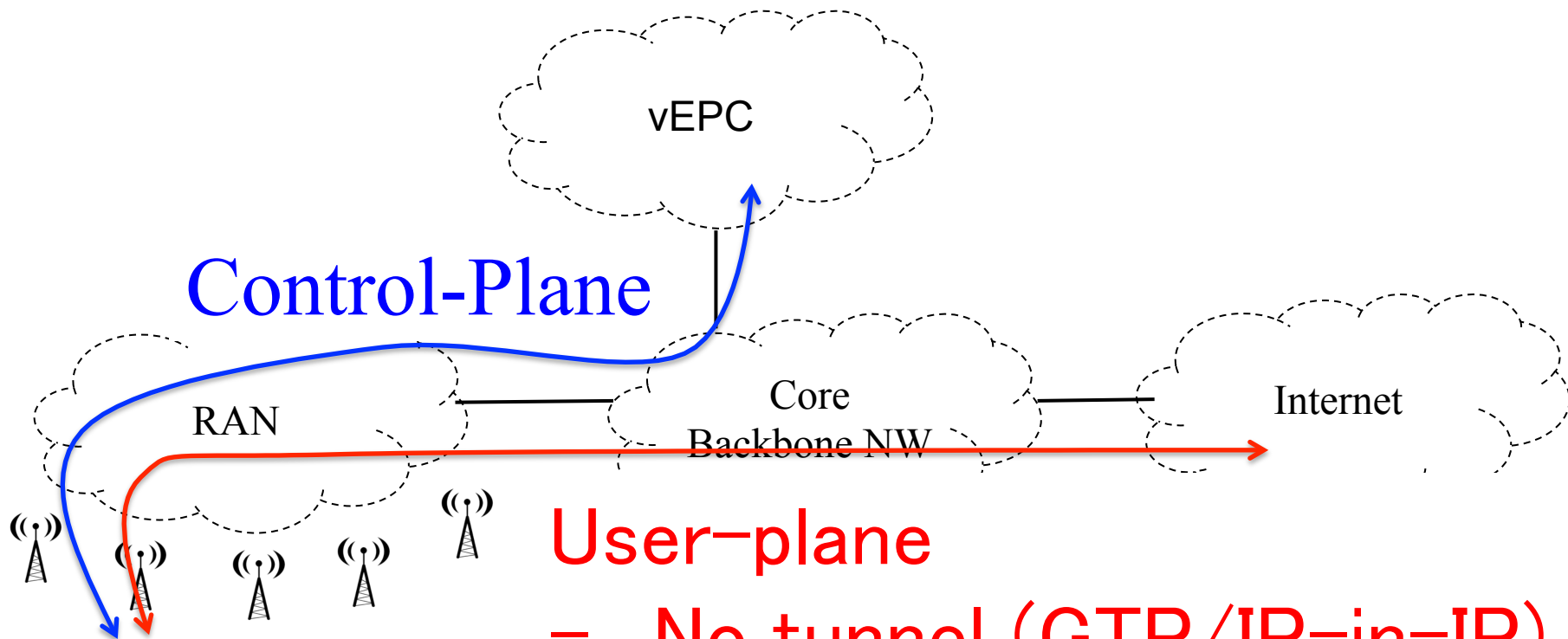


Stateless user-plane architecture for virtualized EPC (**vEPC**)

<http://tools.ietf.org/html/draft-matsushima-stateless-uplane-vepc-01>

Ryuji Wakikawa
Satoru Matsushima

Splitting Control and User Plane



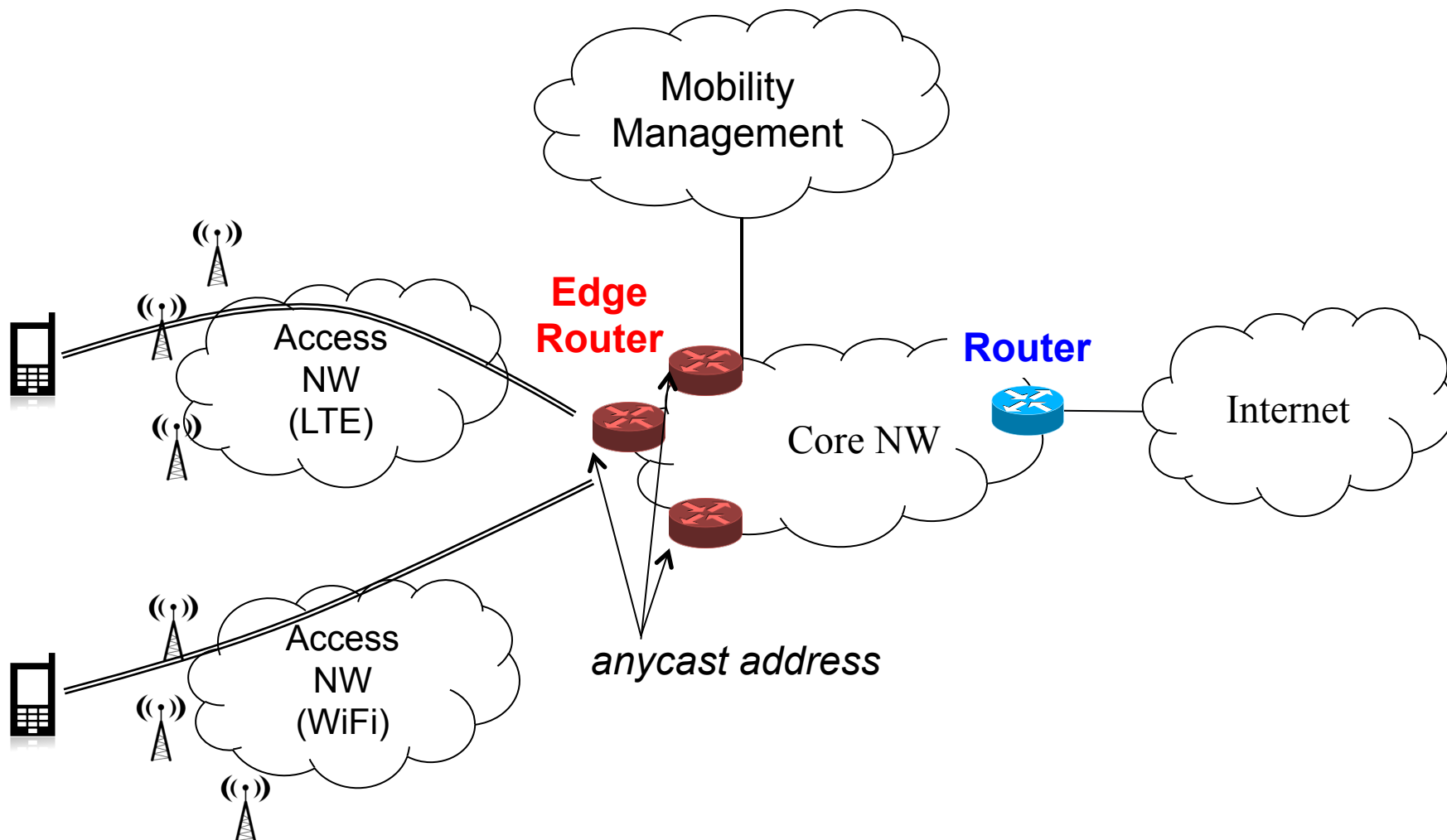
User-plane

- No tunnel (GTP/IP-in-IP)
- Simply Routing

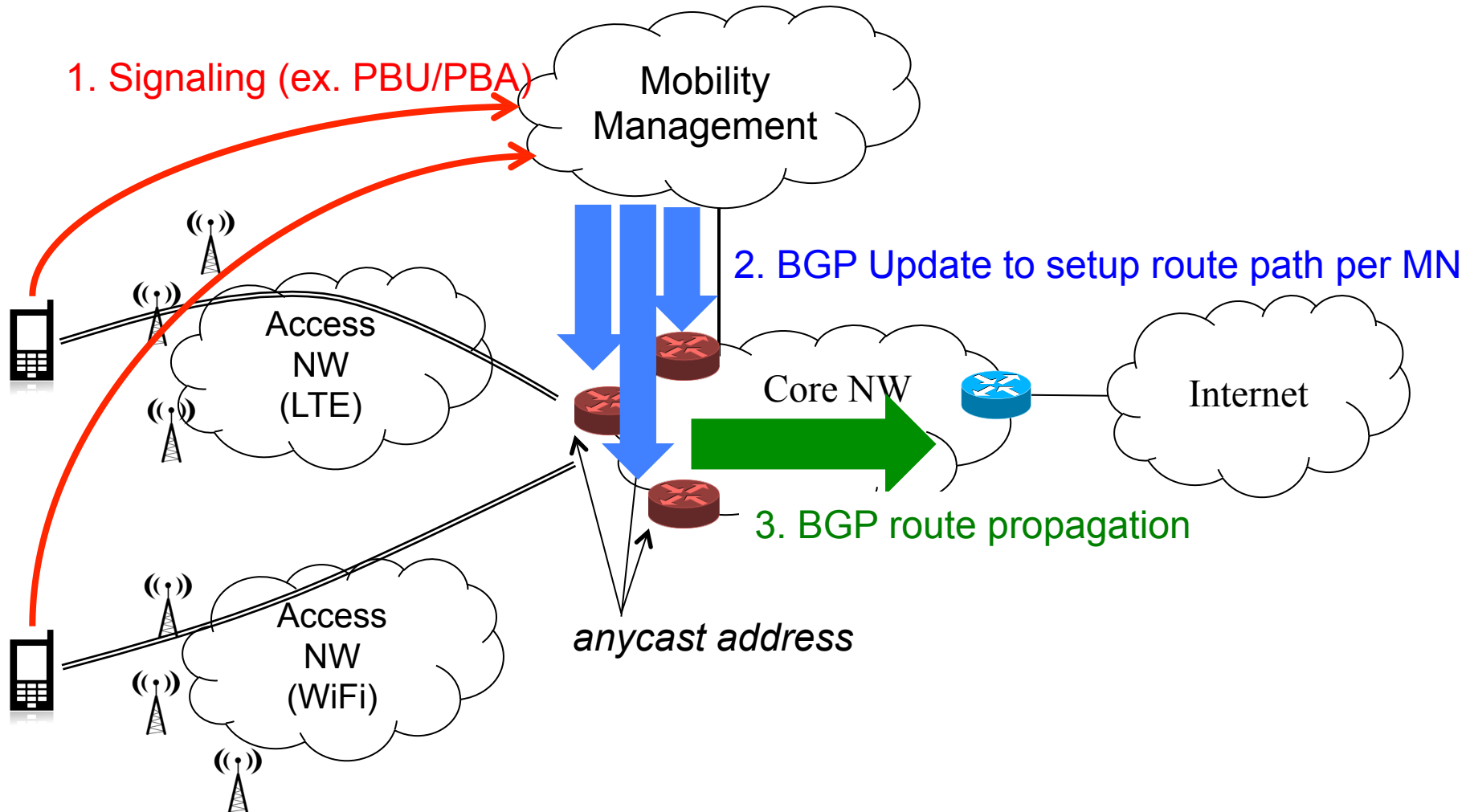
“Requirements and use cases for separating control and user planes in mobile network architectures”

draft-wakikawa-req-mobile-cp-separation-00.txt

Simple Configuration



Stateless user-plane architecture for Mobile



We almost have all components in IETF