

Routing Information Base Info Model

draft-ietf-i2rs-rib-info-model-01

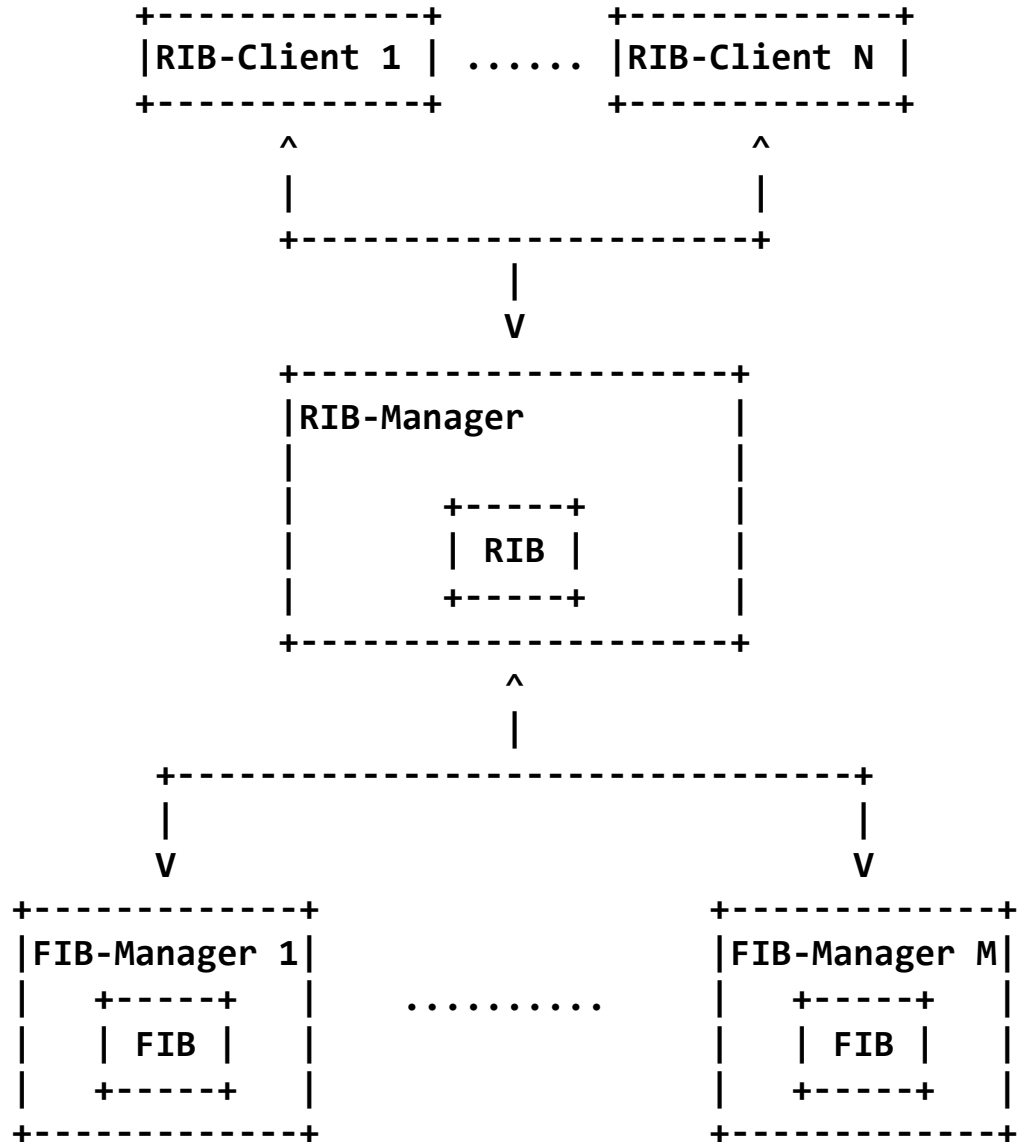
Nitin Bahadur, nitin_bahadur@yahoo.com

Ron Folkes, ronf@juniper.net

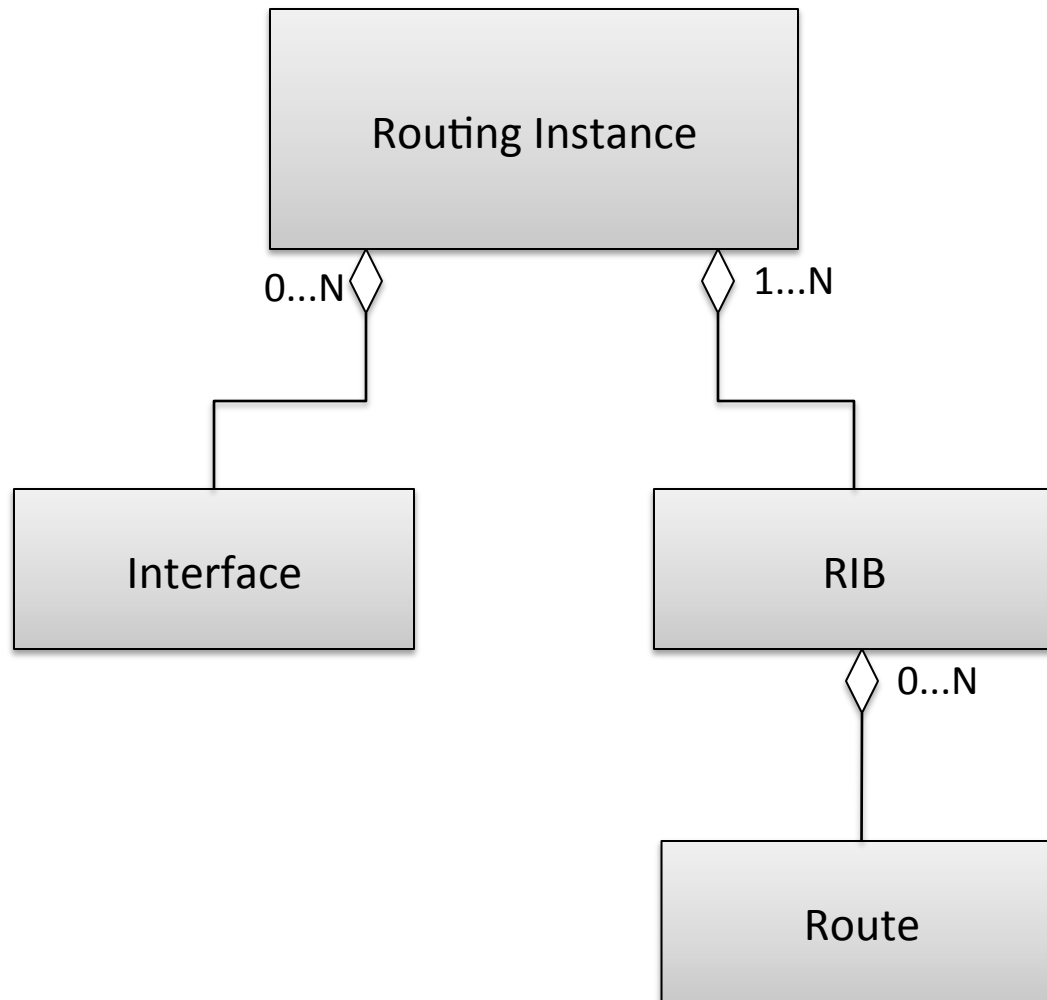
Sriganesh Kini, sriganesh.kini@ericsson.com

Jan Medved, jmedved@cisco.com

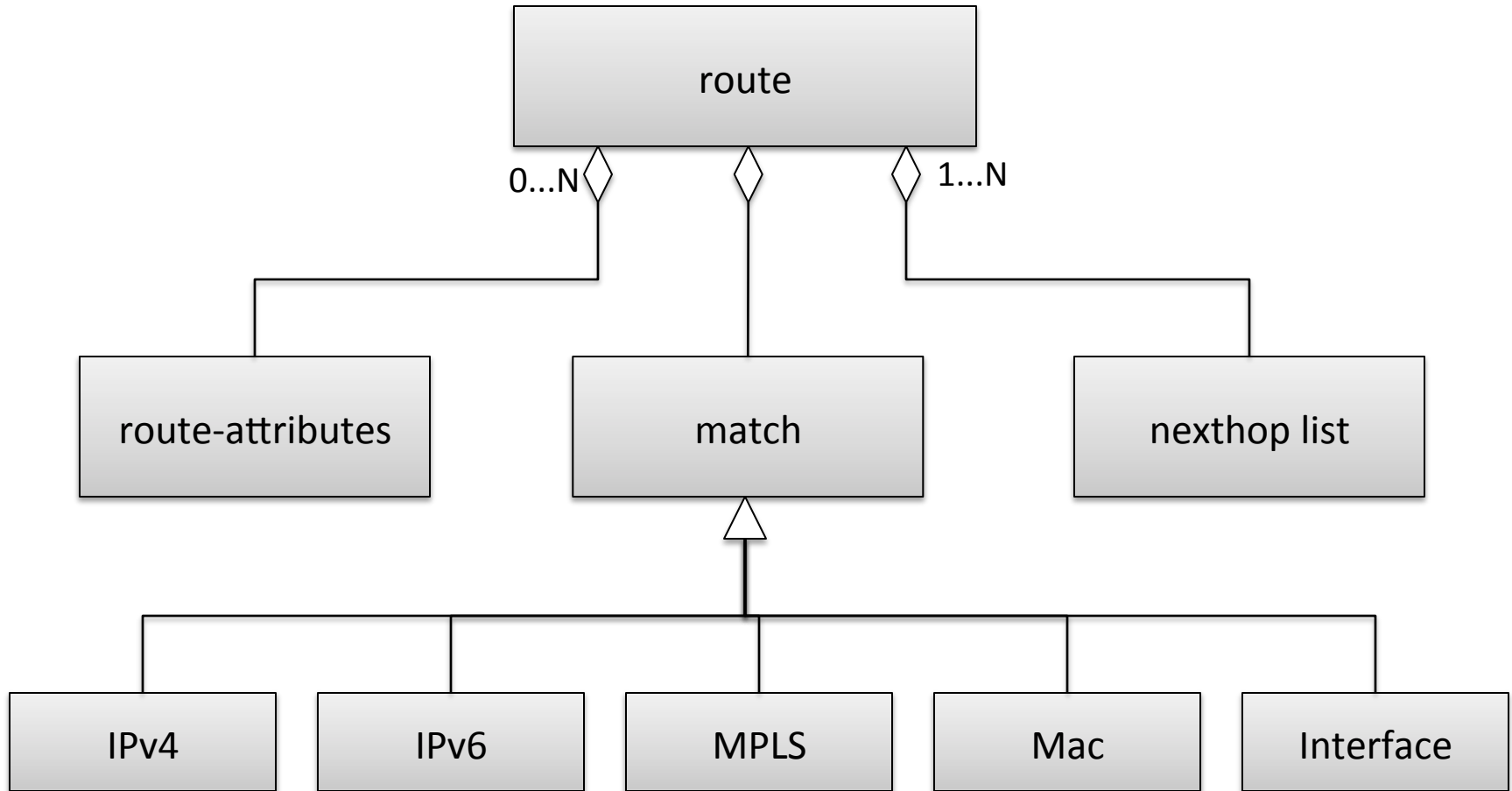
Context



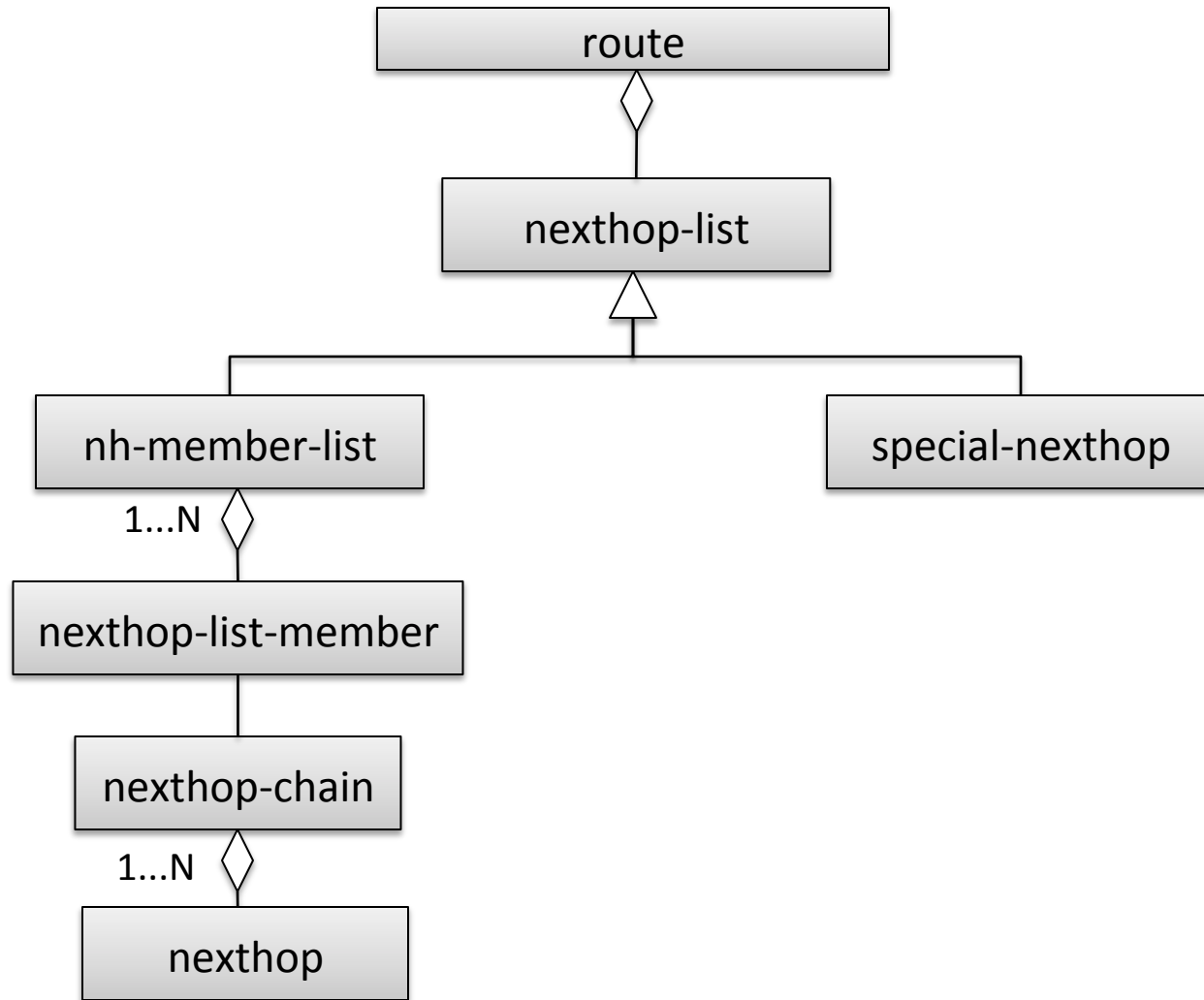
The RIB High-Level View



Route



Nexthop



Changes since last presented

- Resolution of terminology and grammar
- Added diagrams representing the key objects (similar to IETF slides)
- Text clarifications in multiple places (based on list review)
- Inter-domain (AS) specific stuff in a new section called "Inter-domain extensions to the RIB" (as optional augmentations)
- Consolidated rib-family and nexthop-address-family.
- Removed INSTANCE_DISTINGUISHER.
- Removed route-metric (no strong use-case to program 2 routes with different metrics in the same RIB)
- Enhanced ipv4/ipv6 route object so as to enable source based routing.
- Aligned with the structure draft-ietf-netmod-routing-cfg-11

Questions?