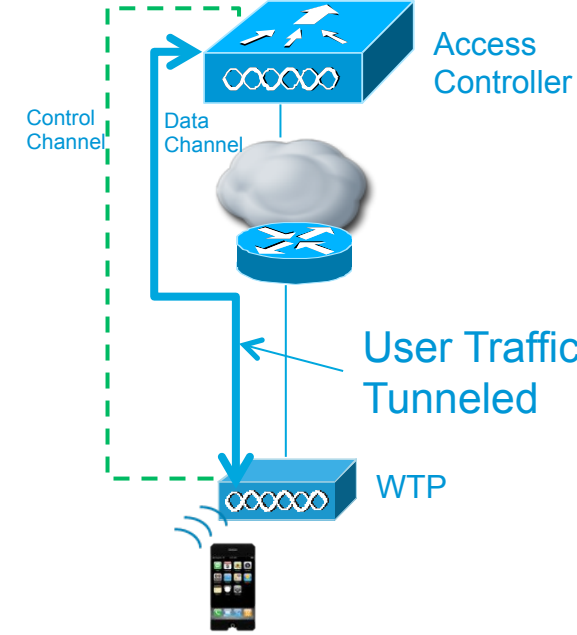
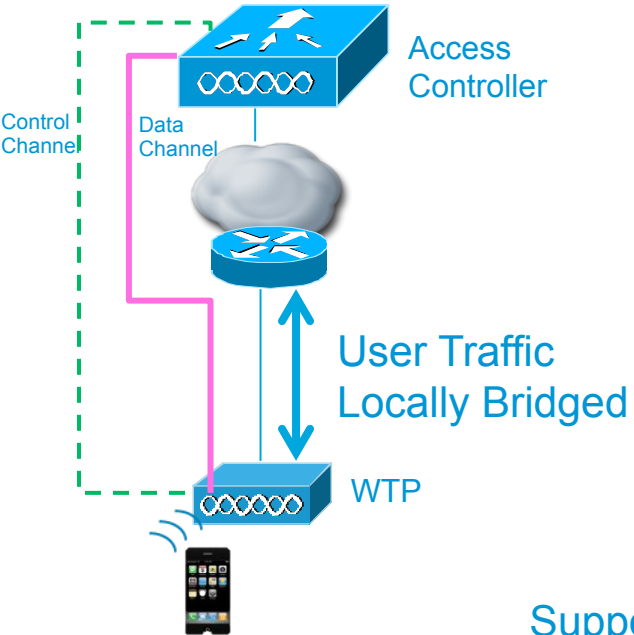


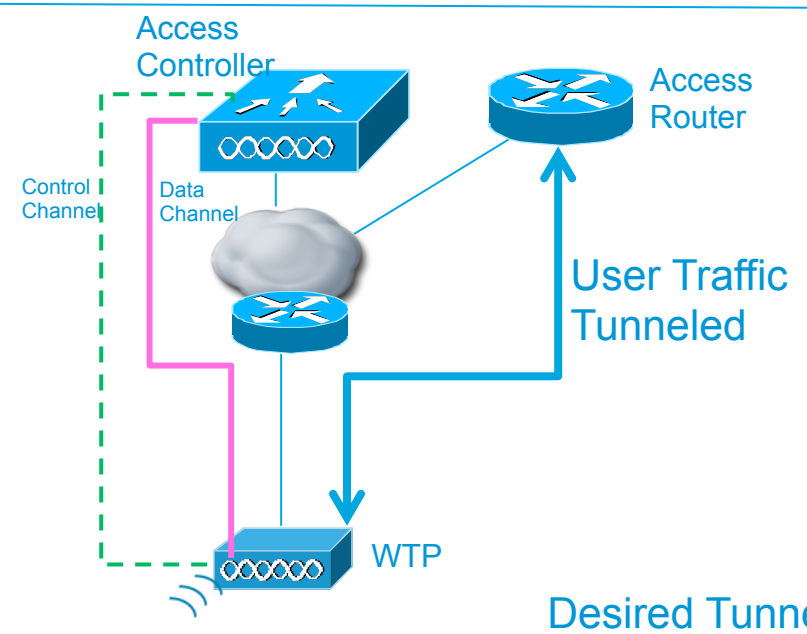
# Alternate Tunnel Encapsulation for Data Frames in CAPWAP: draft-zhang-opsawg-capwap-cds-01

R. Zhang(China Telecom)  
H.Deng (CMCC)  
Z. Cao (CMCC)  
R.Pazhyannur (Cisco)  
S. Gundavelli (Cisco)

# Problem Statement



## Supported Tunnel Modes



## Desired Tunnel Mode

- Separate Control Plane from Data Plane
- Why Local Bridging is not an option
  - SP may not be same as Access Network Provider
- Extend Local MAC mode
  - CAPWAP Data channel for 802.11 Mgmt frames and security
  - User Traffic tunneled to AR instead of AC
- Multiple Additional Tunnel Encapsulations supported

# Proposal

- Incorporated changes based on last meeting discussion
  - Generalized tunnel types to include additional tunnel encapsulation
- Defined new IEEE 802.11 Message Elements
  - Supported Alternate Tunnel Encapsulations
  - Alternate Tunnel Encapsulation
- WTP announces capability in Discover/Join request
  - Support for additional Tunnel Encapsulation (L2TP, PMIPv6-IP/GRE, etc)
- AC may configure Tunnel Encapsulation during WLAN configuration
  - AC may also configure WTP with additional parameters to setup tunnel (for example, IP address of Access Router, shared secret, etc). **This is not described in the current draft.**

# Discussion

- Feedback on mailer
  - ✓ Add descriptive text on why this is needed
  - ✓ Describe how AR will be discovered
  - ✓ Document impact to RFC 5415 and RFC 5416
  - ✓ Editorial changes
- Next steps
  - This is the third version (second major revision after original submission). Is it on track to get it adopted ?