

Basic Network Policy

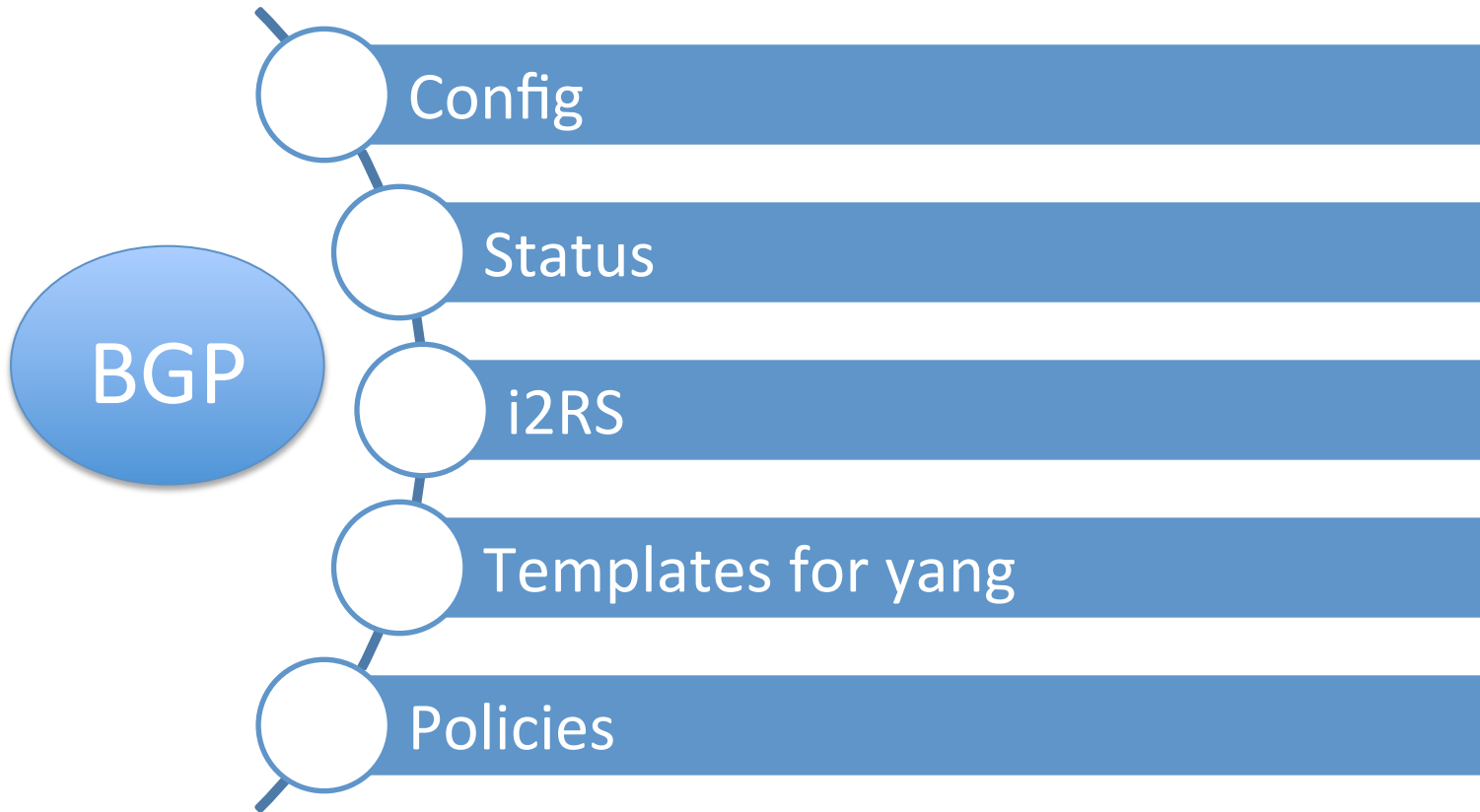
Sue Hares (Huawei)

Qin Wu (Huawei)

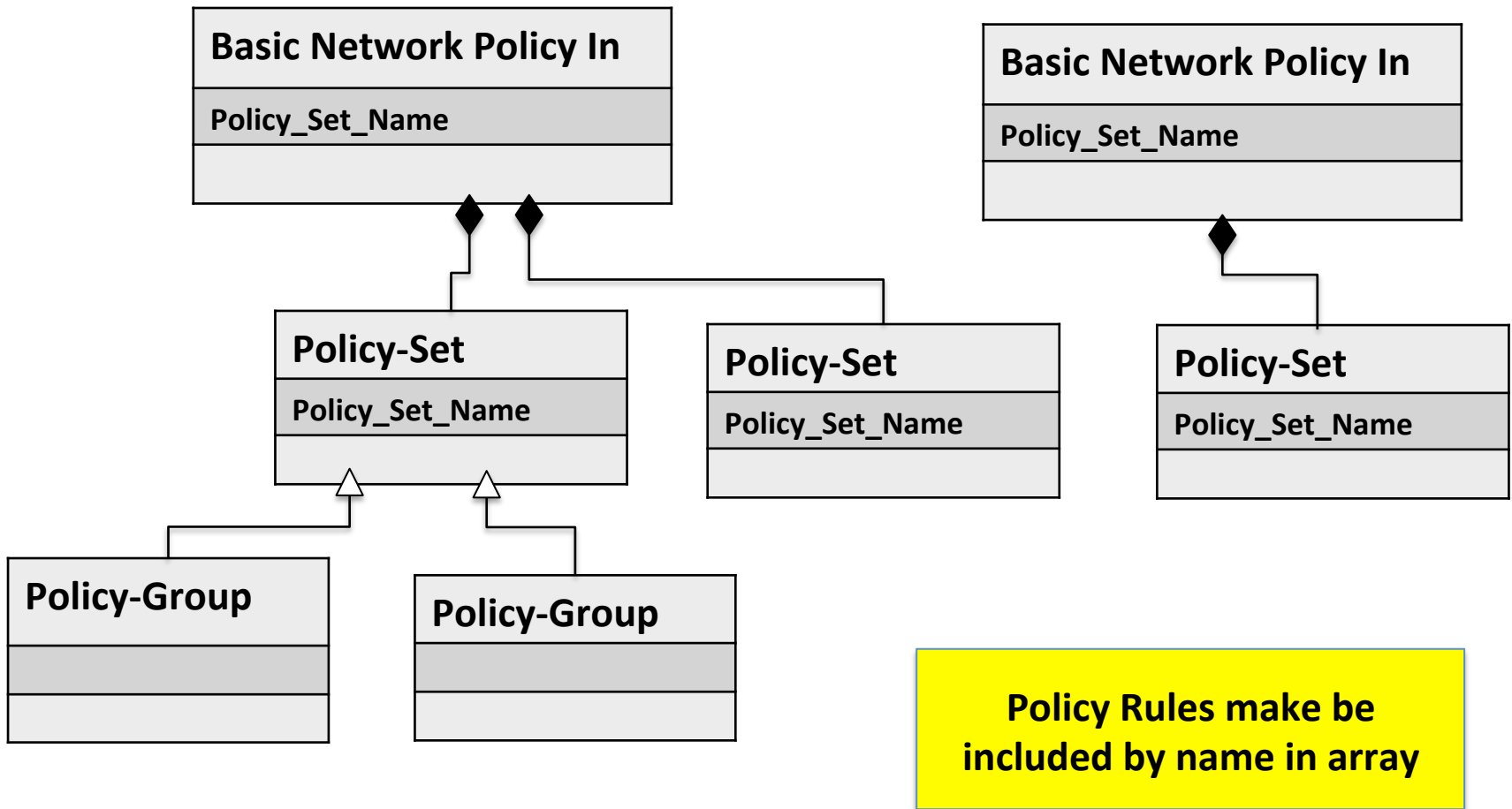
Basic Network Policy

- Sets of Policy used by
 - Policy-Based Routing (PBR) IM
 - I2RS Local Policy (LP) IM
 - BGP IM
 - Traffic Steering Model
 - SFC Model
- No templates in netmod work
 - Wish there were

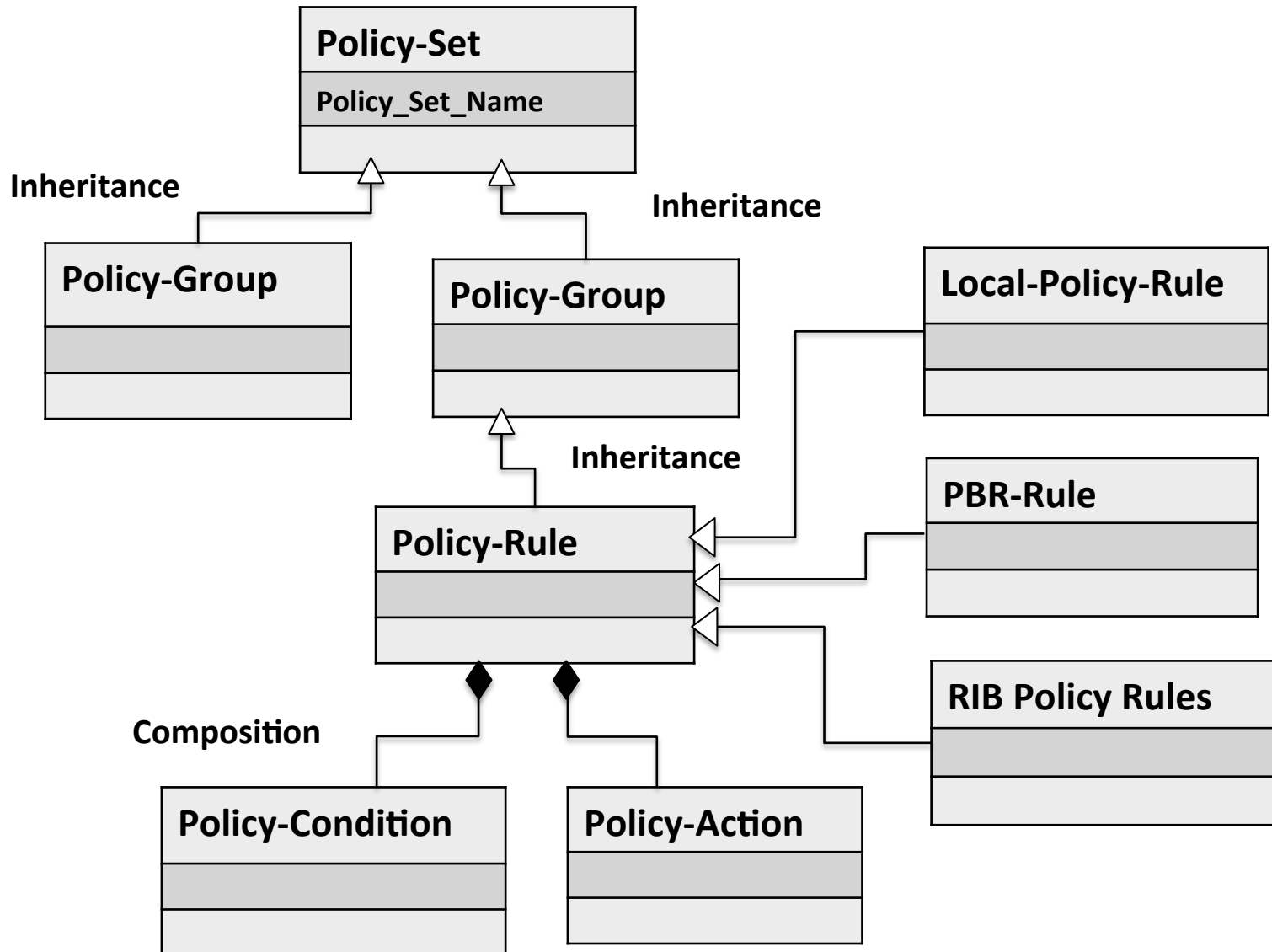
Data Stores



Policy sets collect policy groups

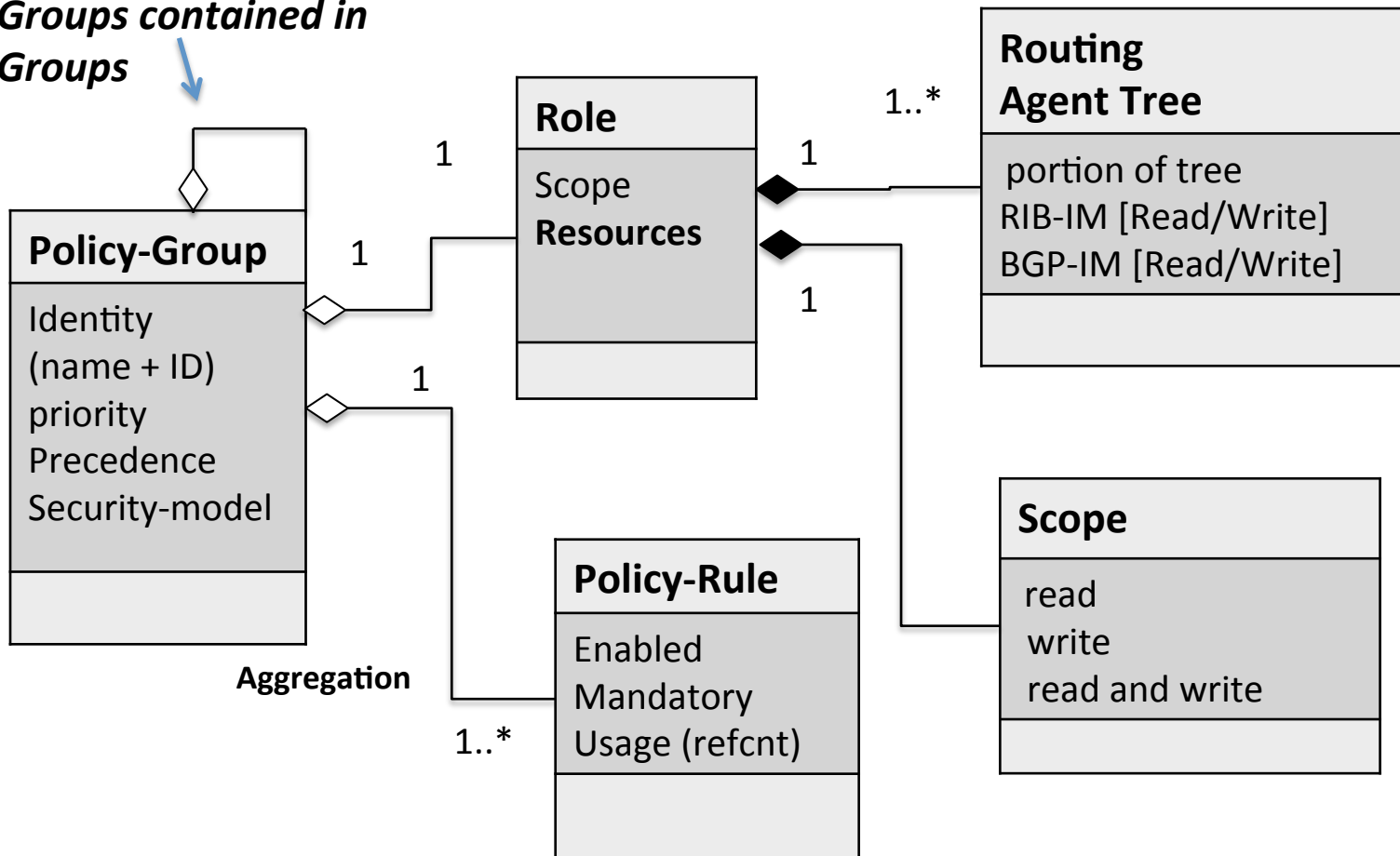


Basic Network Policy (BNP) IM



BNP - Policy Group Component

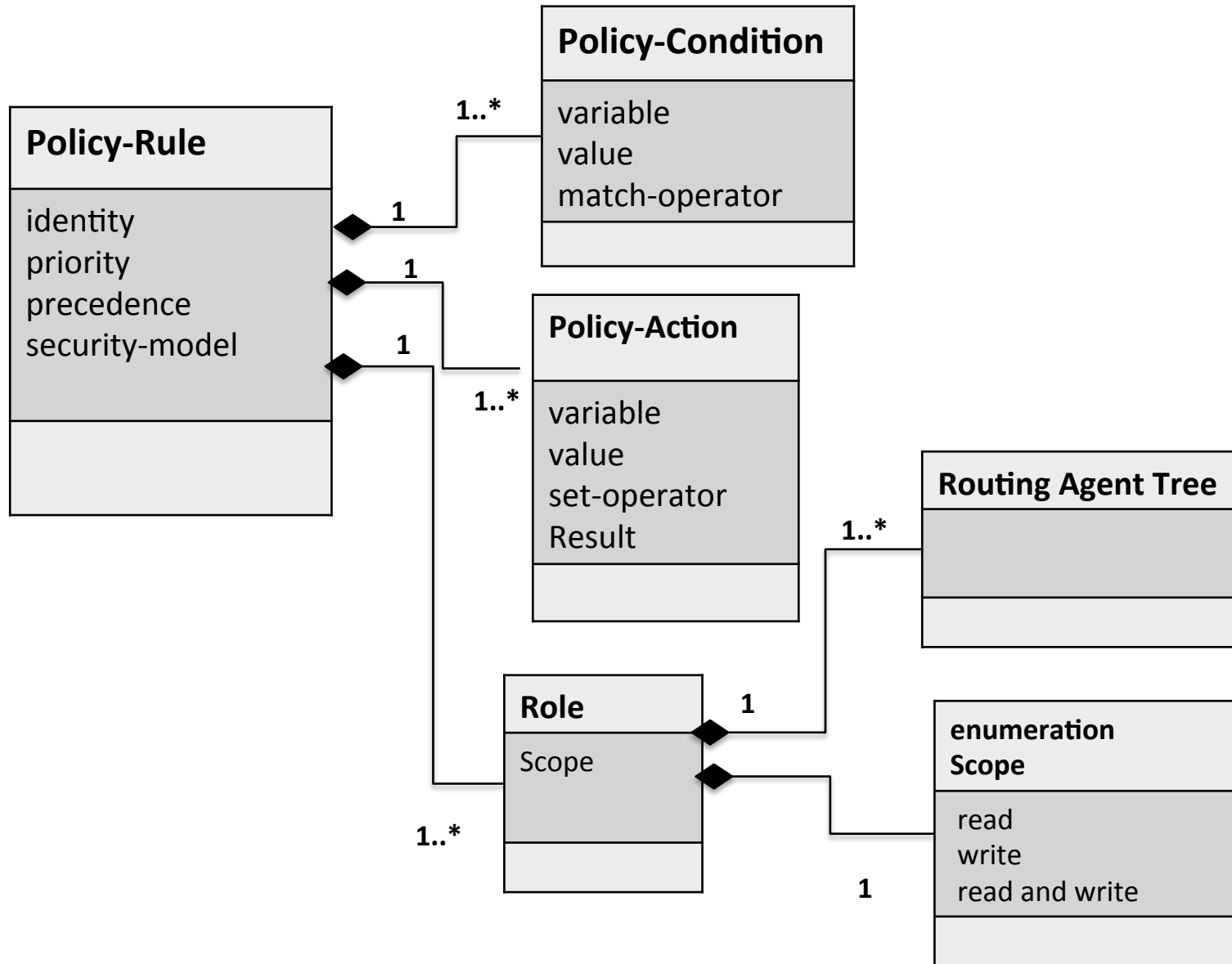
Groups contained in Groups



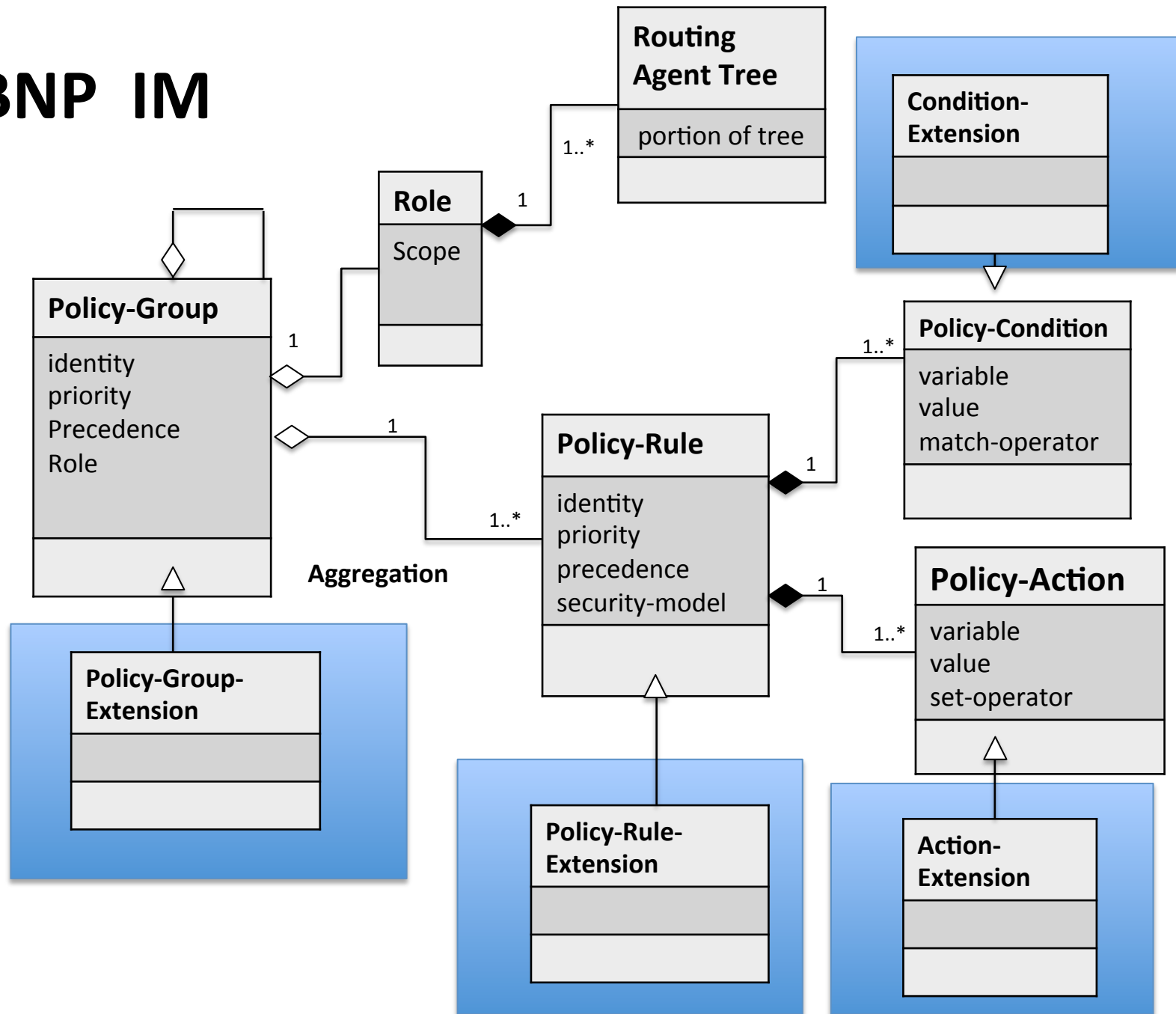
Identity – name plus version id

Resource – how much memory or other resources will take to write the policy (5 ACLs vs 300K ACLs)

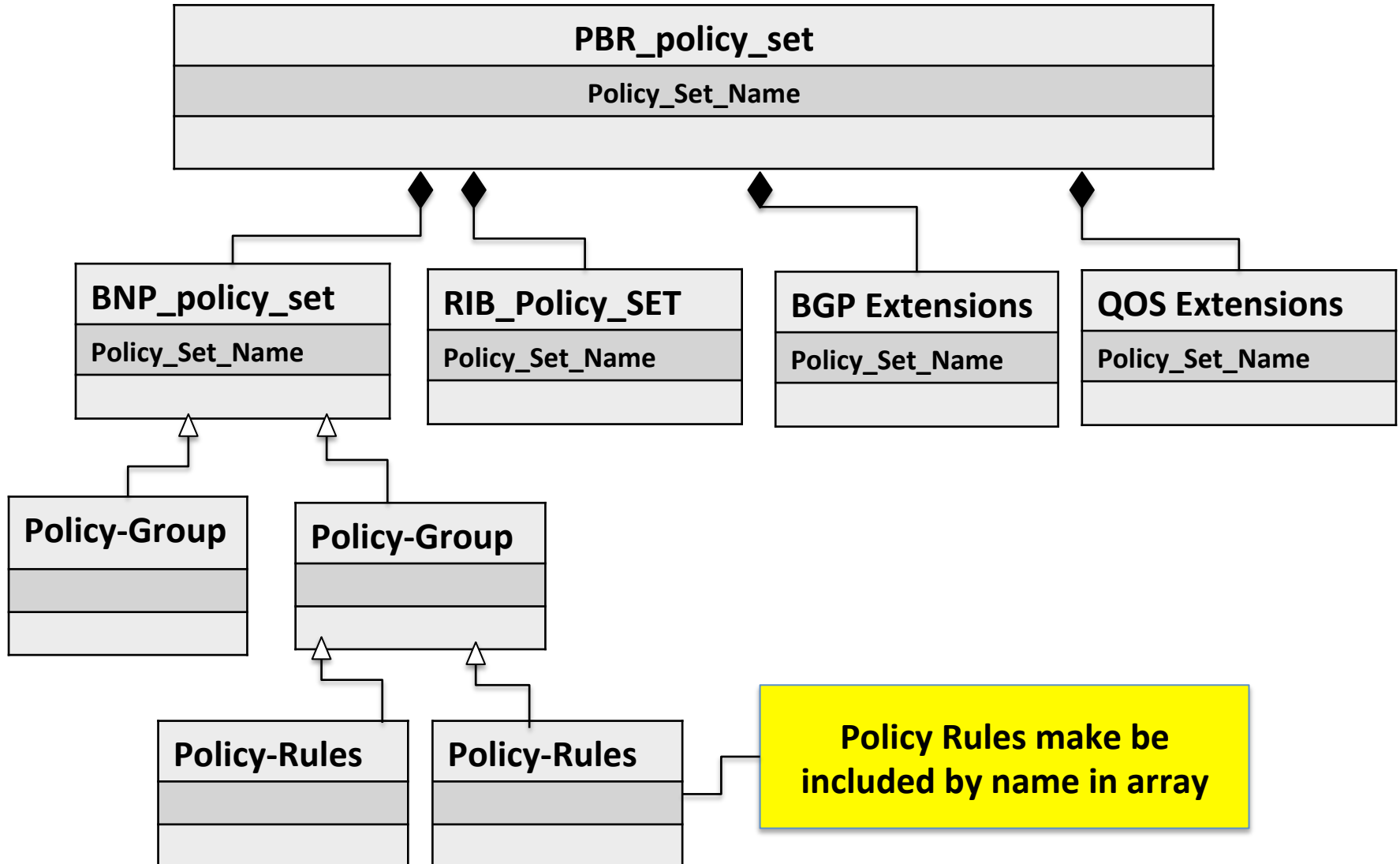
BNP Policy Rule



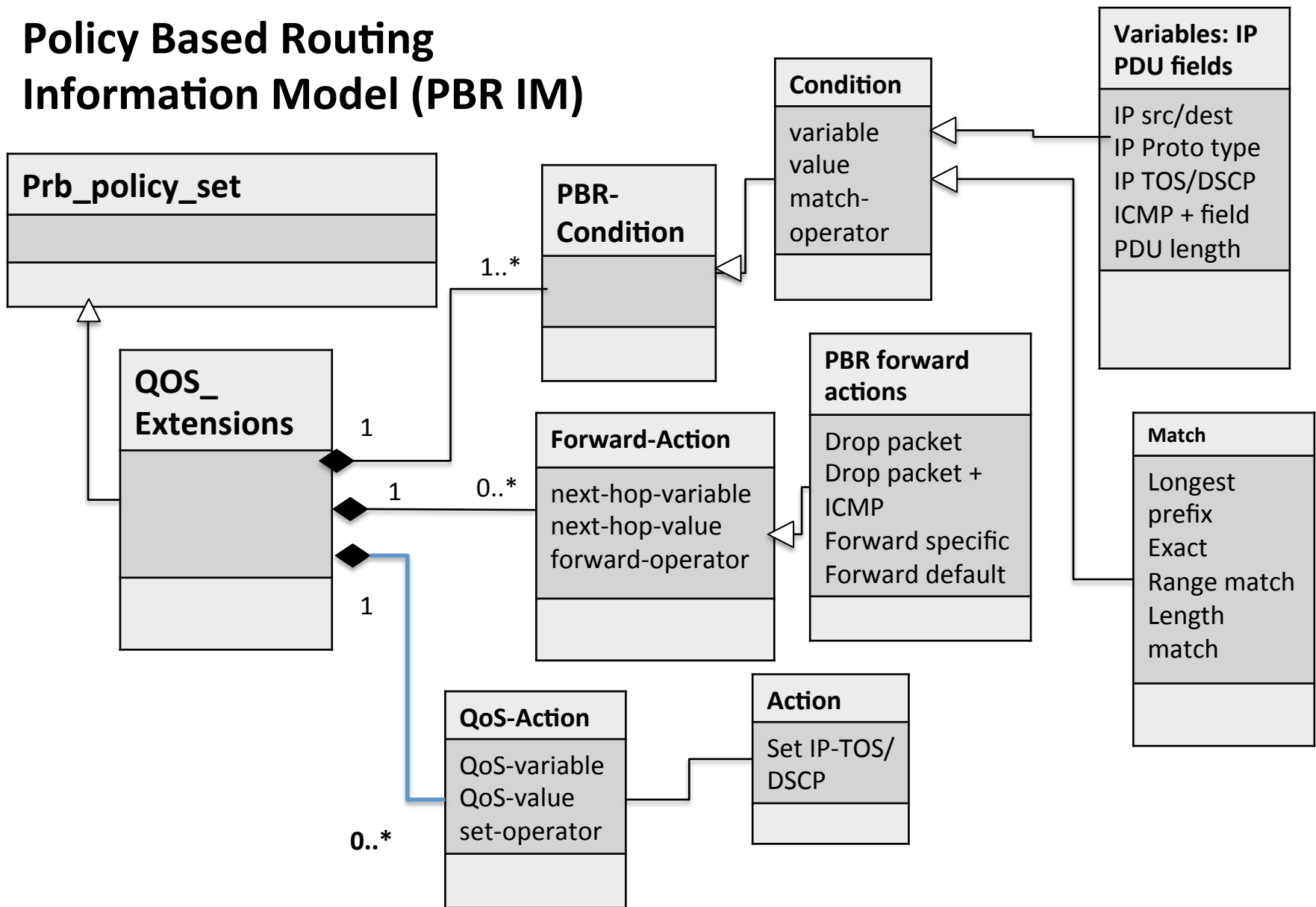
BNP IM



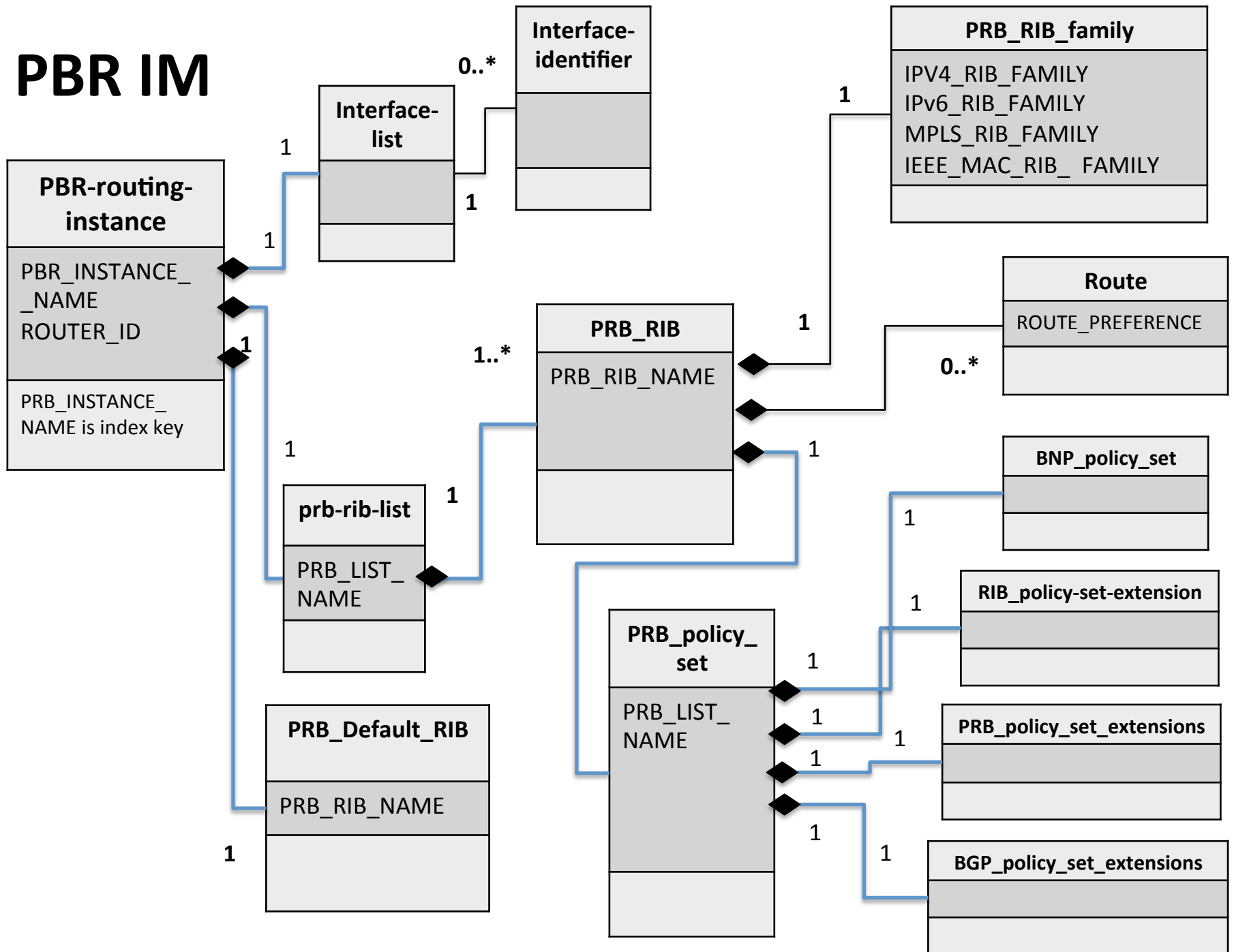
PBR policy set



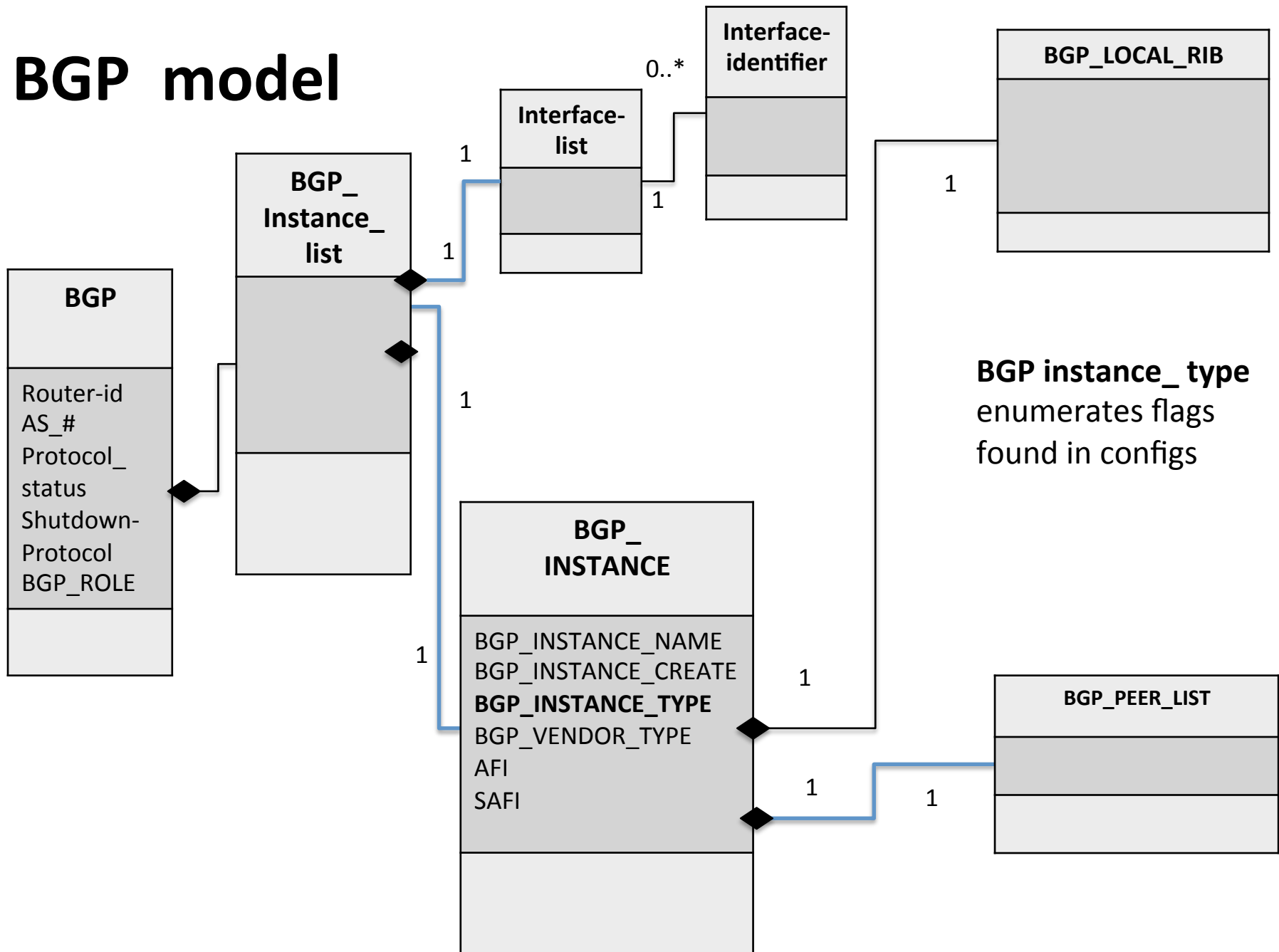
Policy Based Routing Information Model (PBR IM)



PBR IM



BGP model



What's next

- Thank you for input – Tom Petch, Dean Bogdanovic, Jeff Haas, Keyur Patel
- Best if this is aligned with PBR netmod and some templates
- Want to do this as weekly Discussion Group and drafts on github
- Any input taken ..