

# Multi-chassis PON Protection in MPLS

draft-jiang-pwe3-mc-pon-02

Yuanlong Jiang, Yong Luo, Huawei

Edwin Mallette, Bright House Networks

Chengbin Shen, China Telecom

Yimin Shen, Juniper

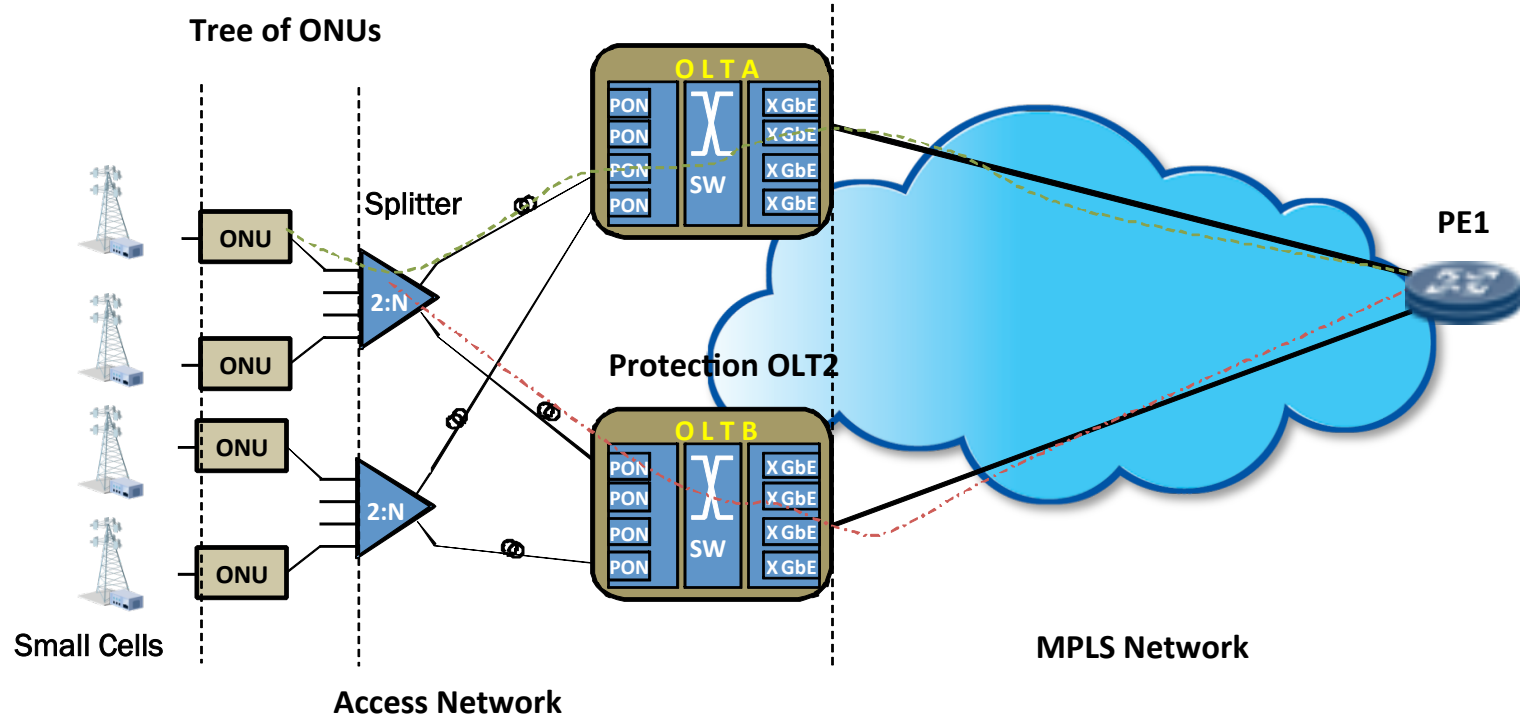
# Overview

---

- Basically, this document provides multi-chassis support for PON access
- Unique characteristic of PON protection
  - In trunk protection, downstream optical signal is not available on the protection link
- Extend ICCP to support synchronization of PON state and use PW redundancy to synchronize PW switchover

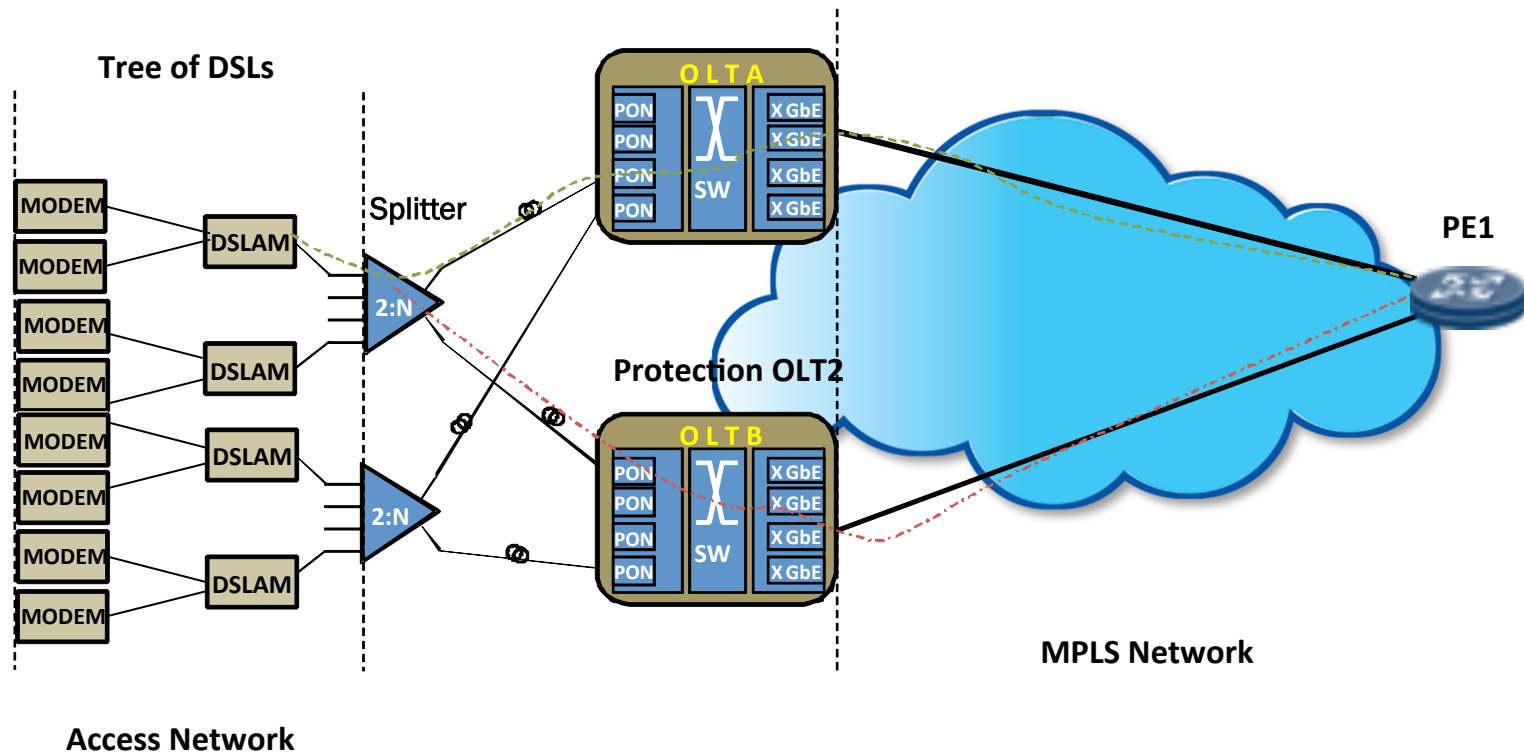
# Protection of a tree of ONUs

- Trunk protection can protect a tree of ONUs with scalability



# Protection of a tree of DSL

- DSL tree builds on existing subscriber lines
- PON further provides a section of aggregation
- Trunk protection can protect a tree of DSLs with scalability



# ***Main updates in revision 02***

---

- New co-authors are added
  - Chenbin Shen from China Telecom, and
  - Yimin Shen from Juniper
- New application scenarios are added
  - Protection of DSL tree is considered
  - This document does not consider pure multi-chassis DSL protection at present, as
    - Unique characteristic of trunk protection does not apply to pure DSL
    - It is better to be discussed in another standalone document

# ***Next Step***

---

- Can this be accepted as a WG item?

---

*Thank You*