

ND Option for NMS Discovery

([draft-liu-6man-nd-nms-discovery](#))

Bing Liu

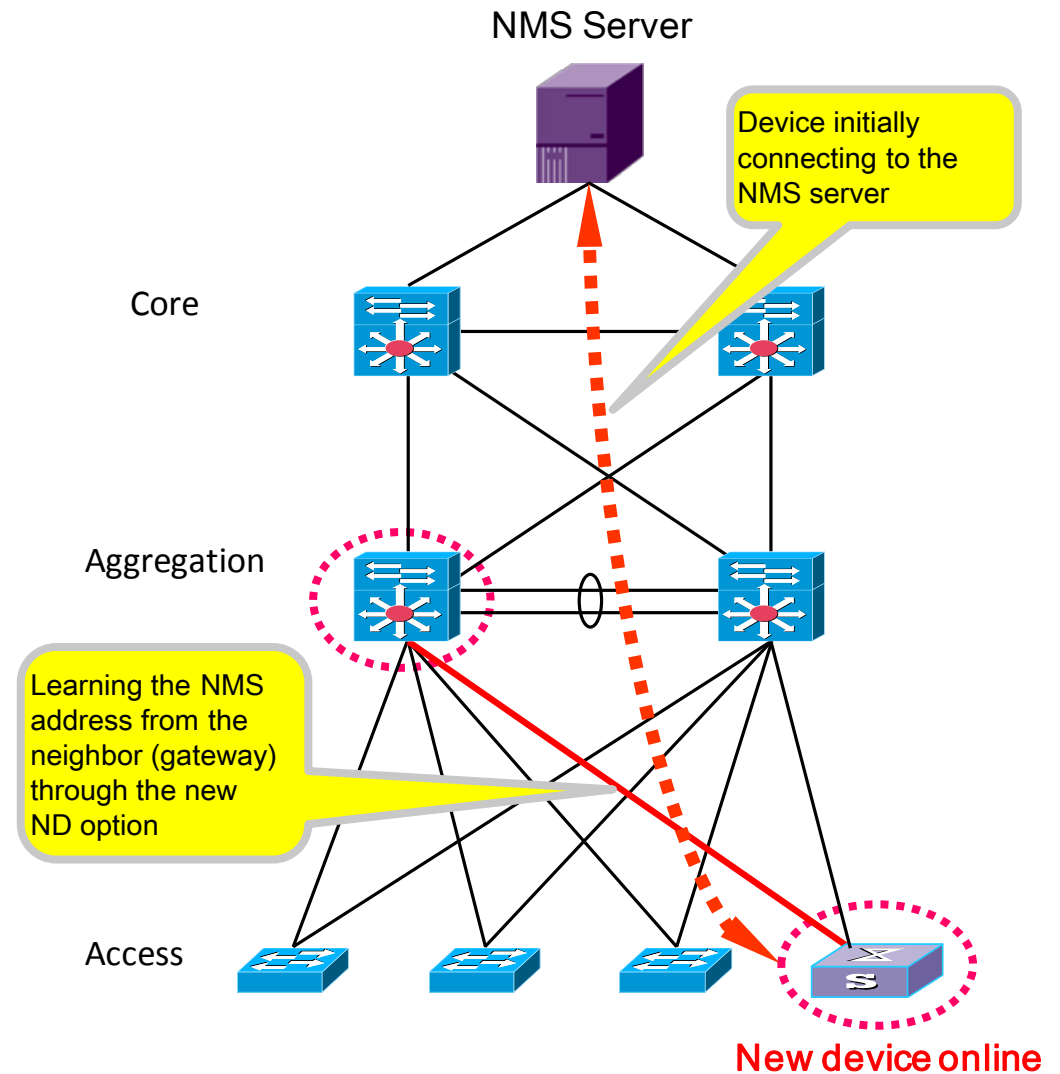
6man@ietf91, Nov 2014

Motivation

- NMS (Network Management System) is a MUST-HAVE component in modern ISP networks.
- Currently, most solutions are NMS initially discovering/connecting the devices
- We lack a standard way for the devices to initiatively discover/connect the NMS...
- which could improve the efficiency and automation

Approach

- Neighbor-Learning NMS Discovery
- Define a new ND Option for this purpose
- Why ND?
 - ND is a basic requirement for IPv6-enabled routers
 - It is a neighbor communication protocol, suitable for the scenarios
 - Leverage automation without adding too much human management burden



Next Steps

- Solicit more review/comments
- To see if 6man in favor of adopting such a work?

Thank you!

Your comments would be appreciated much.

leo.liubing@huawei.com

IETF91, Honolulu