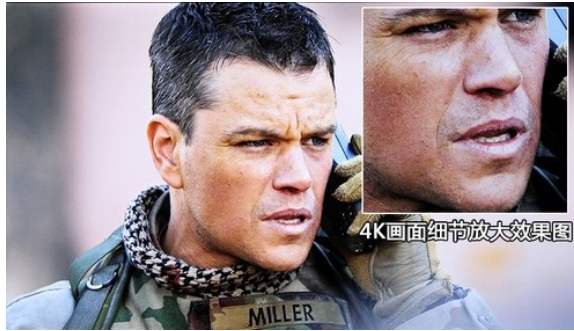


RTCP Feedback Message for Image Control

draft-huang-avtext-feedback-image-
control-00

ietf93@Prague

Motivations



- A detailed image of part of a picture may be preferred by users in some applications:
 - Monitoring applications.
 - Video conferencing calls.
 - Tele-medicine
- Done by the receiver (e.g. displaying SD image from a received 4k image)
 - No need for sender side but requires high bandwidth and processing
- Done by the sender (e.g. using camera zoom and move).

Overview of the New Method

- Use a new RTCP feedback message to signal the area that the receiver requests to enlarge.
- The specific area is a rectangle indicated by the coordinate of the upper left point and the length and width, based on the pixels of the current picture sent by the sender.
 - The new picture may display information outside of the current view (move the camera) but requires consent from the sender

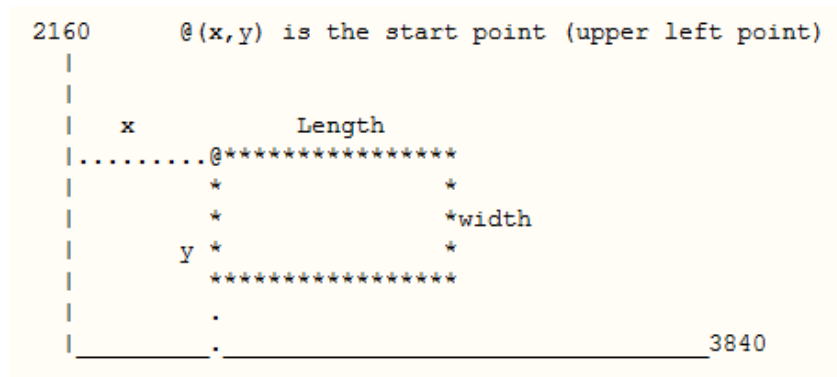
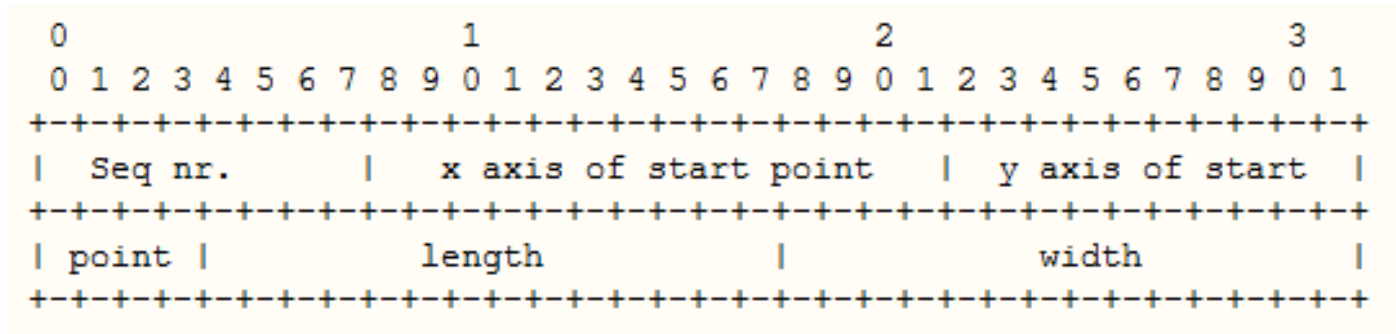
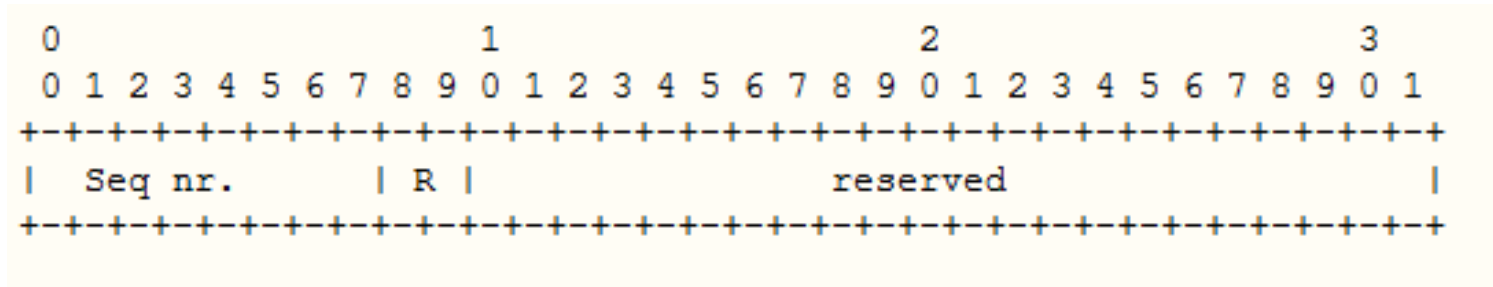


Image Control Request (ICR) Feedback Message



- Sent by a decoder to request a image change to an encoder.
- It indicates the required rectangle based on pixels of the current picture.
- The decoder is allowed to adjust the final presenting of the image if the rectangle does not suit well.
- Mixers should not forward the ICR message, but translators MAY forward the message if it doesn't support the image change.

Image Control Notification (ICN) Feedback Message



- R=0: the media sender applies the image change successfully
 - R=1 : the values of ICR message are invalid
 - R=2: the media sender does not support the image change.
- Used by the encoder to acknowledge the reception of an ICR.
 - A mixer or translator that acts on an ICR SHOULD send a corresponding ICN.
 - A translator that forwards an ICR MAY need to delay the ICN until the ICR it send has been responded to.

Discussion

- Liaison from 3GPP
 - Authors were not aware of the 3GPP work, does not appear in the IANA registration for RTP feedback messages
 - Have Region Of Interest in 26114-d00
 - Not clear what is “original” picture.
 - The first displayed picture may be a zoomed in picture of the room or just a slide.
 - Does not support move out what was the “original” view
- Suggest adding support allowing receiver to keep current views for later use. (3GPP has a sender side pre-defined)
- Look at having the actual view description in the ICN message and send it as an RTP header extension?
 - Not sure if important since the new view is as seen by the view requestor
- Welcome reviews and suggestions.

THANK YOU