

Evolving FPCP

Satoru Matsushima

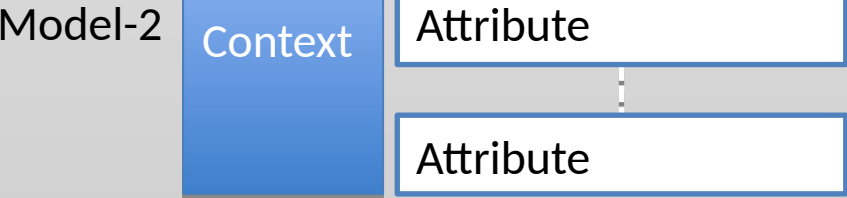
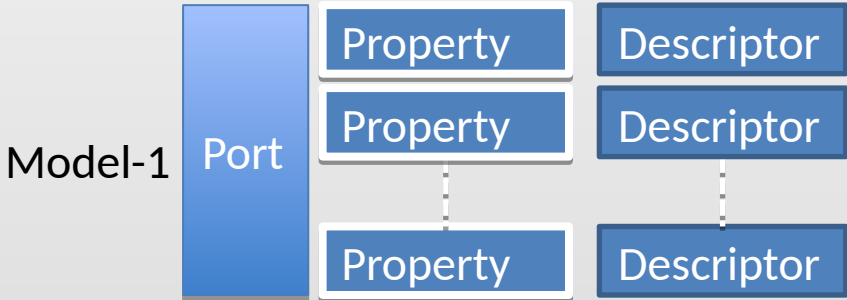
03/28 '16

Why?

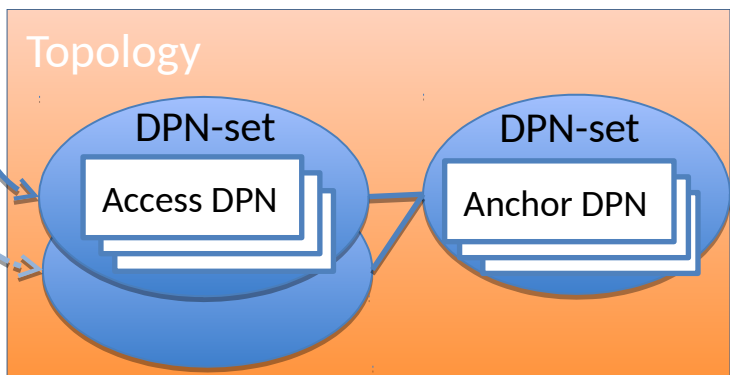
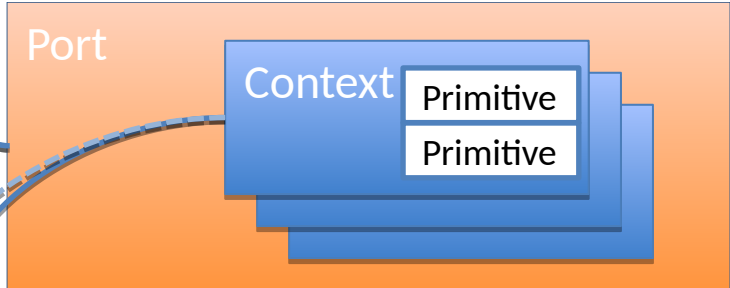
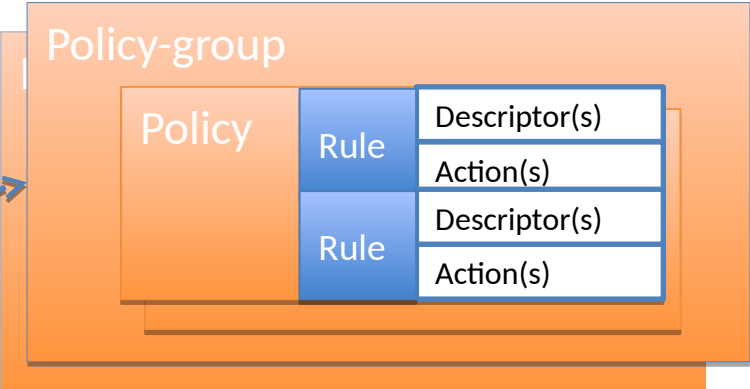
- We must converge Model-I and II into a consistent spec to bring to the WG
 - Those two are currently disconnected but just coexist in the same doc.
- FPCP must provide abstractions which is clearly distinguished from concretes
 - Current Model-I includes varied level of abstractions
 - Some of them are very similar with Model-II concretes
 - It makes much confusion of why that two are needed?

Modeling Concept

Current

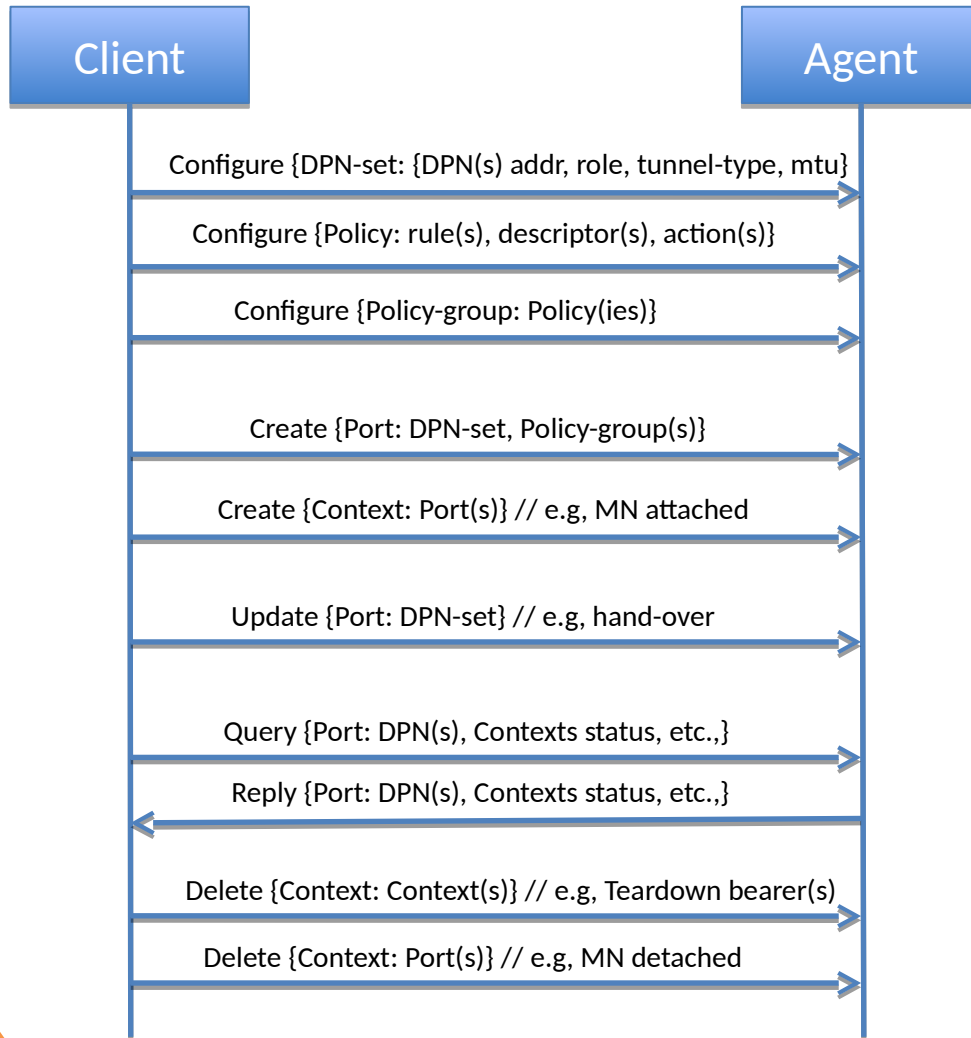


New

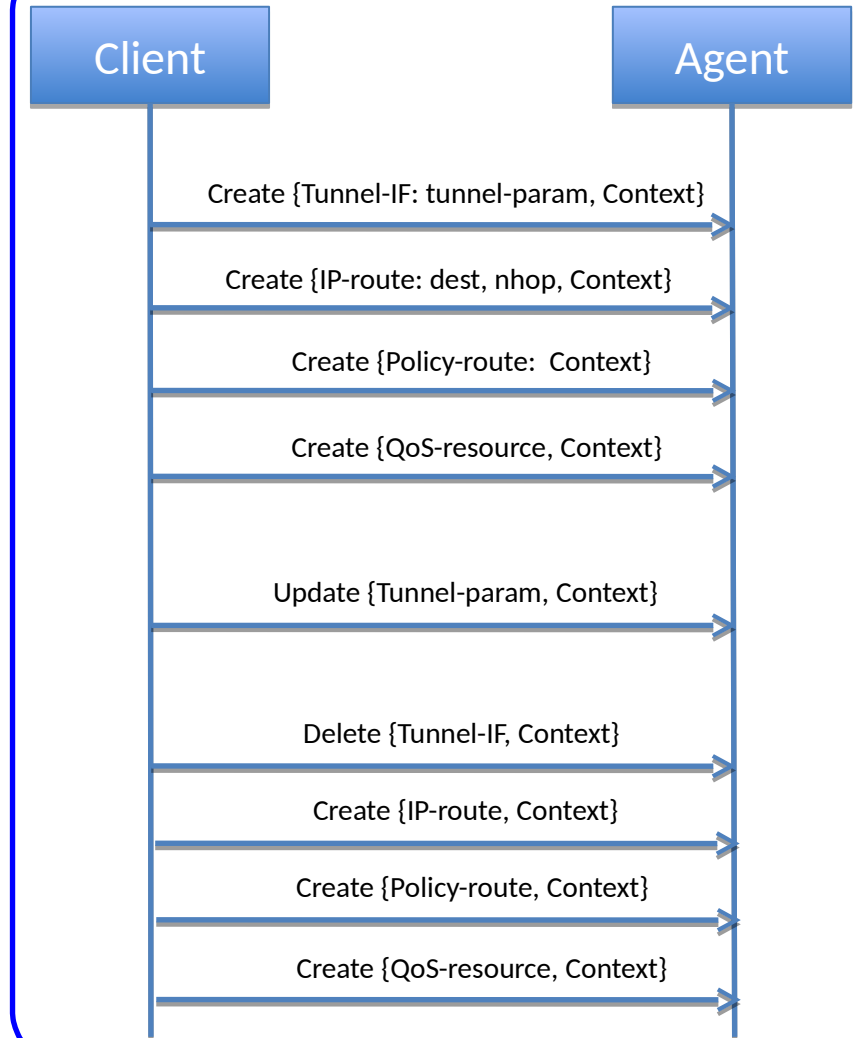


New Operational Concept

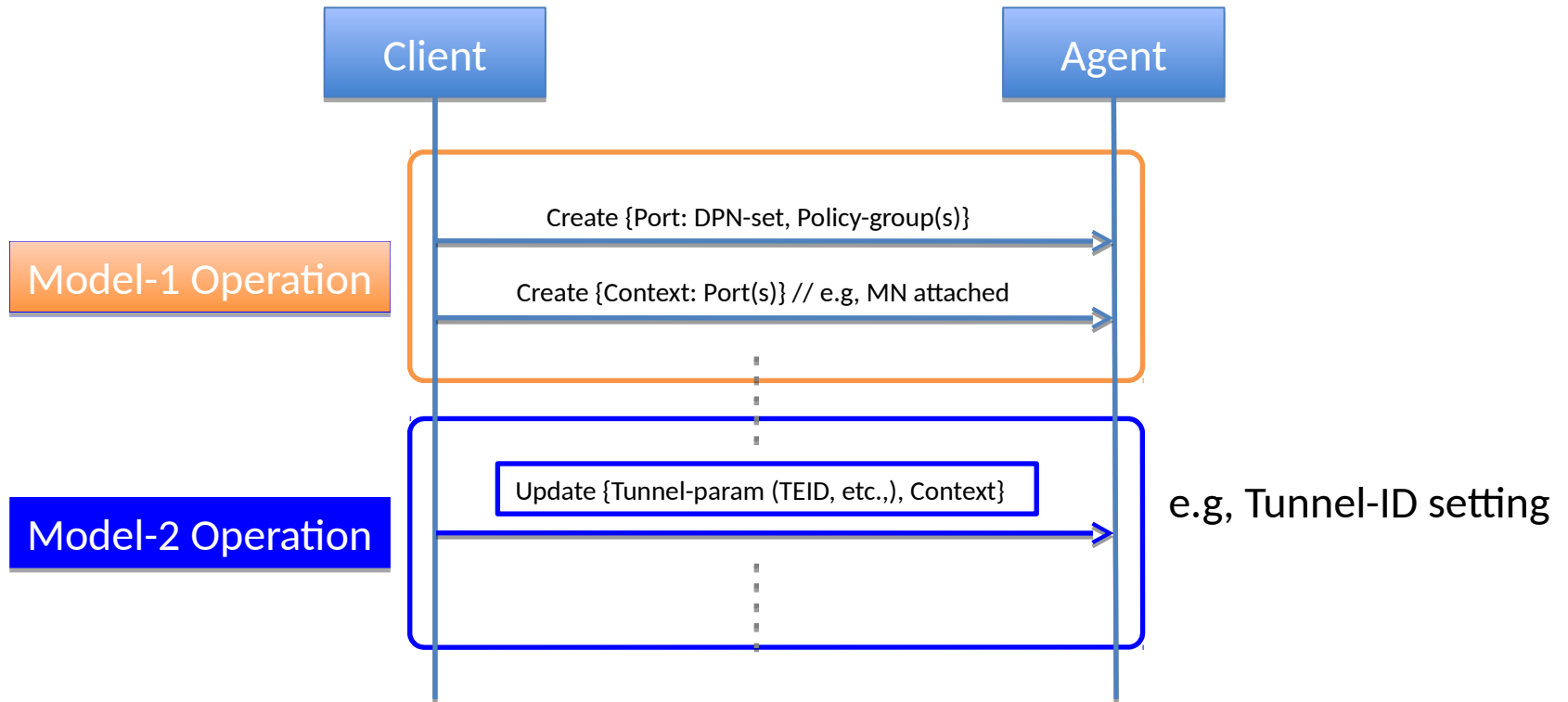
Model-1 Operation



Model-2 Operation



Model-2 Operations can reinforce Model-1 Operations



EOF