

draft-minaburo-lpwan-rohc- applicability-00

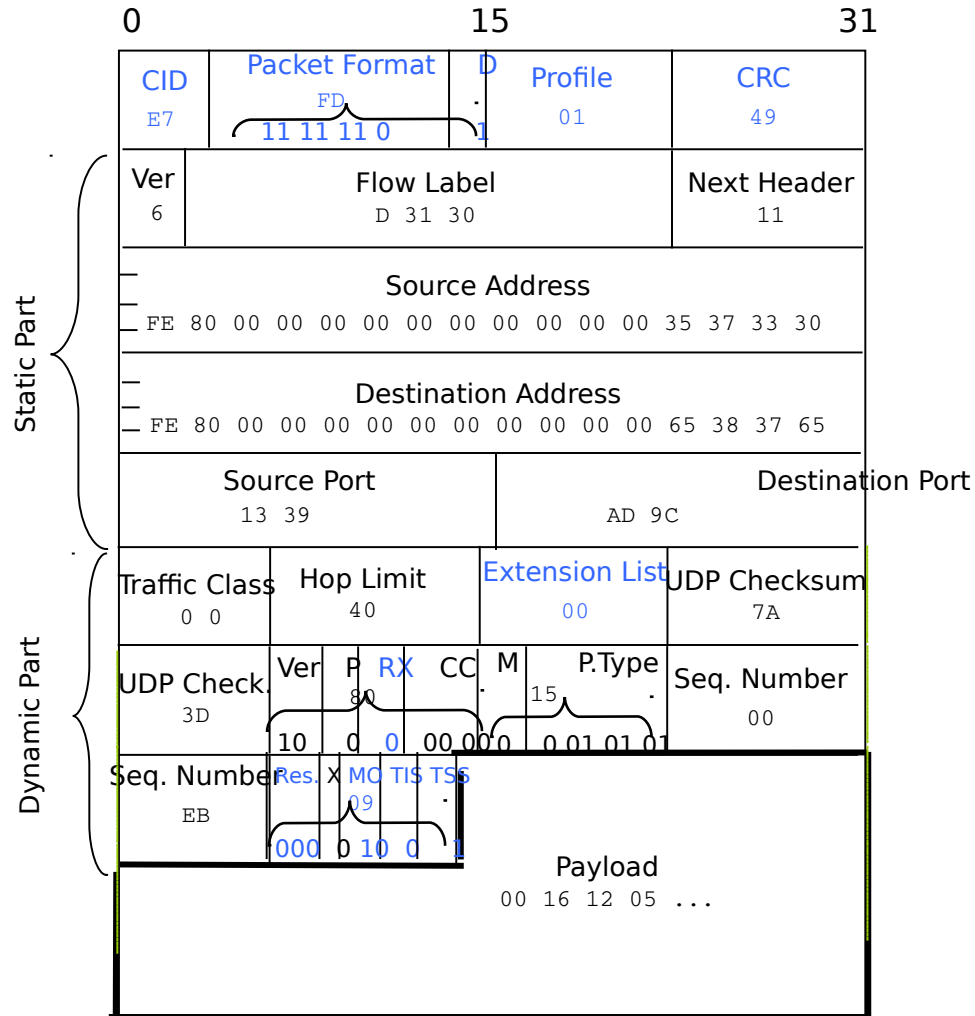
Ana Minaburo
Laurent Toutain

Outline

- RoHC functionality
- Next Steps

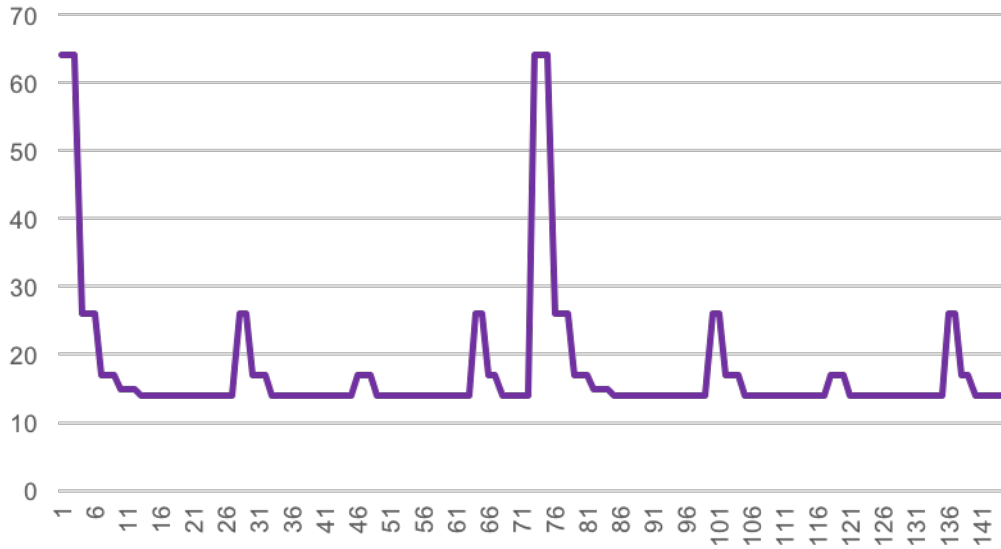
ROHC

Classification Fields



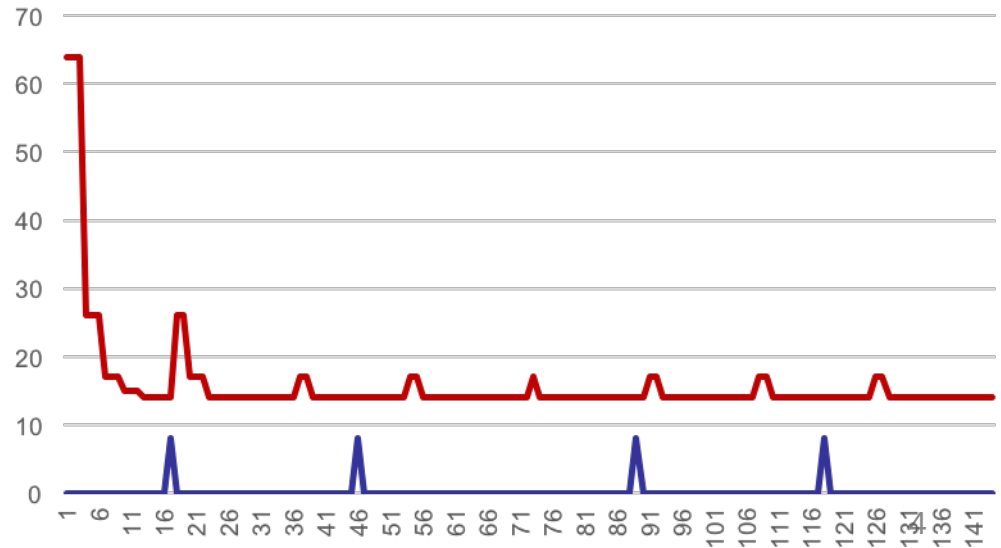
RoHC

RoHC U-Mode



Profile 2: IP/UDP

RoHC O-Mode



RoHC Applicability

- RoHC Framework (RFC 5795)
 - Use a Master SN to manage context synchronization, control compression and reduce the header size
 - Encoded with W-LSB
 - Complex (168p (RFC 3095) + 36p (RFC 5795) + 60p (RFC4997) + 122p (RFC5225)) vs to CoAP = 40p and IPv6 = 39p
 - Does not compress CoAP header, which is asymmetric
 - For multimedia flows
 - Not routable packets
 - Control information is sent in the format packet
 - ACL for small flows = 6 bytes
 - ACL for larger flows = 3 bytes

Next Steps

- RoHC for LPWAN
 - Work on CoAP profile
 - Proposed research work is trivial
 - Not enough for LPWAN
 - Adapt Framework to LPWAN networks
 - Asymmetric CoAP behavior – response can be a data packet
 - Patents?
- Or Concentrate efforts on a specific solution for LPWANs