

# CLUE Framework

CLUE Interim Meeting June 7-8, 2012

Mark Duckworth

Allyn Romanow

Brian Baldino

Andy Pepperell

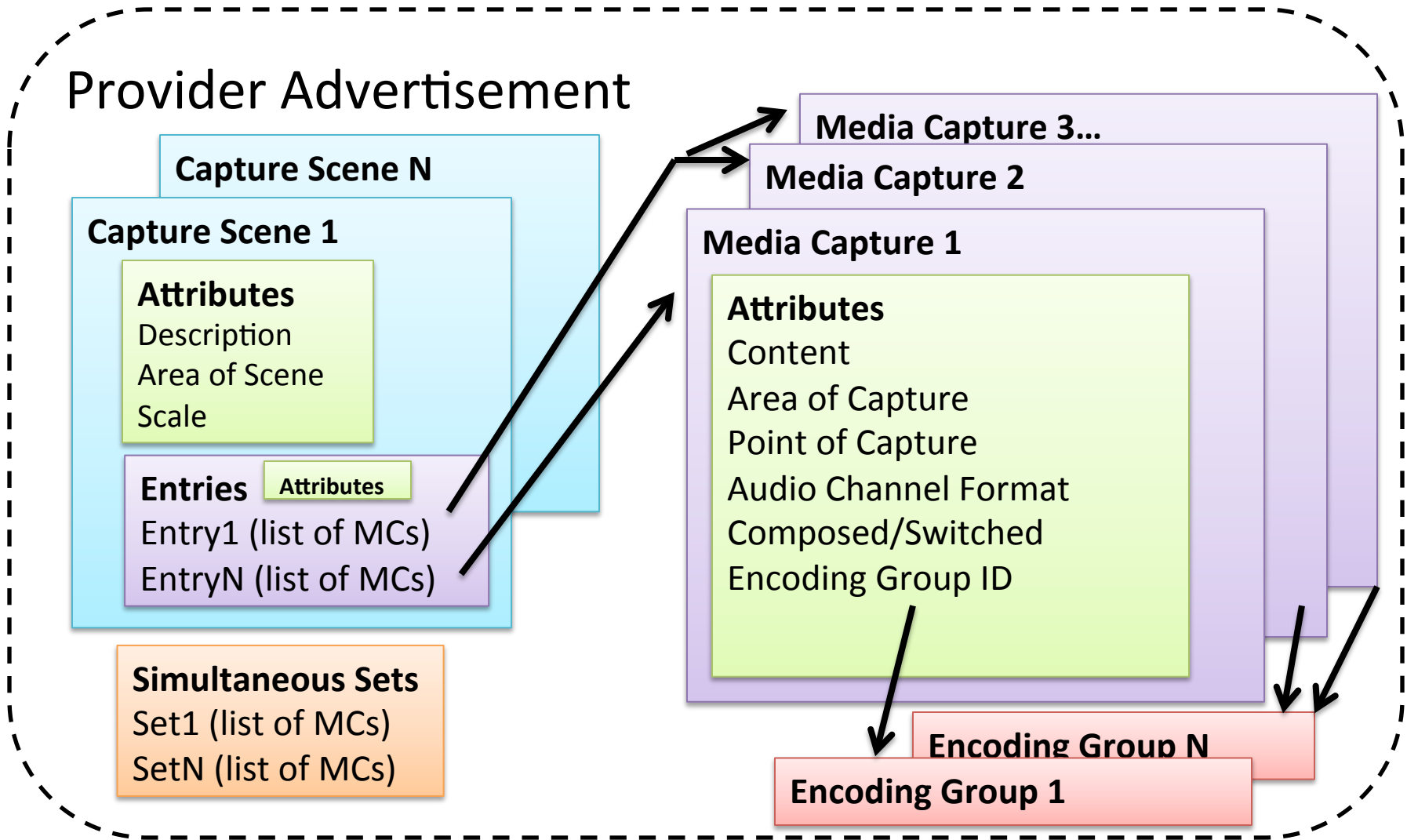
# Agenda

- Document changes from version 04 to 05
- Framework structure
- Issues and proposals
  - Ticket #8 – Differentiating capture scenes
  - Ticket #10 – Does consumer have enough info?
  - Switched capture example from Paris
  - Issues from Framework Appendix

# Changes since IETF83 Paris meeting

- Clarify limitations of the **composed** attribute
- Add attribute to a capture scene:
  - **Scene-switch-policy**: {site-switch, segment-switch}
  - text describing the policies came directly from the use case document
- Add **capture scene description** attribute and **description language** attribute.
- update examples to be consistent with the **content** attribute

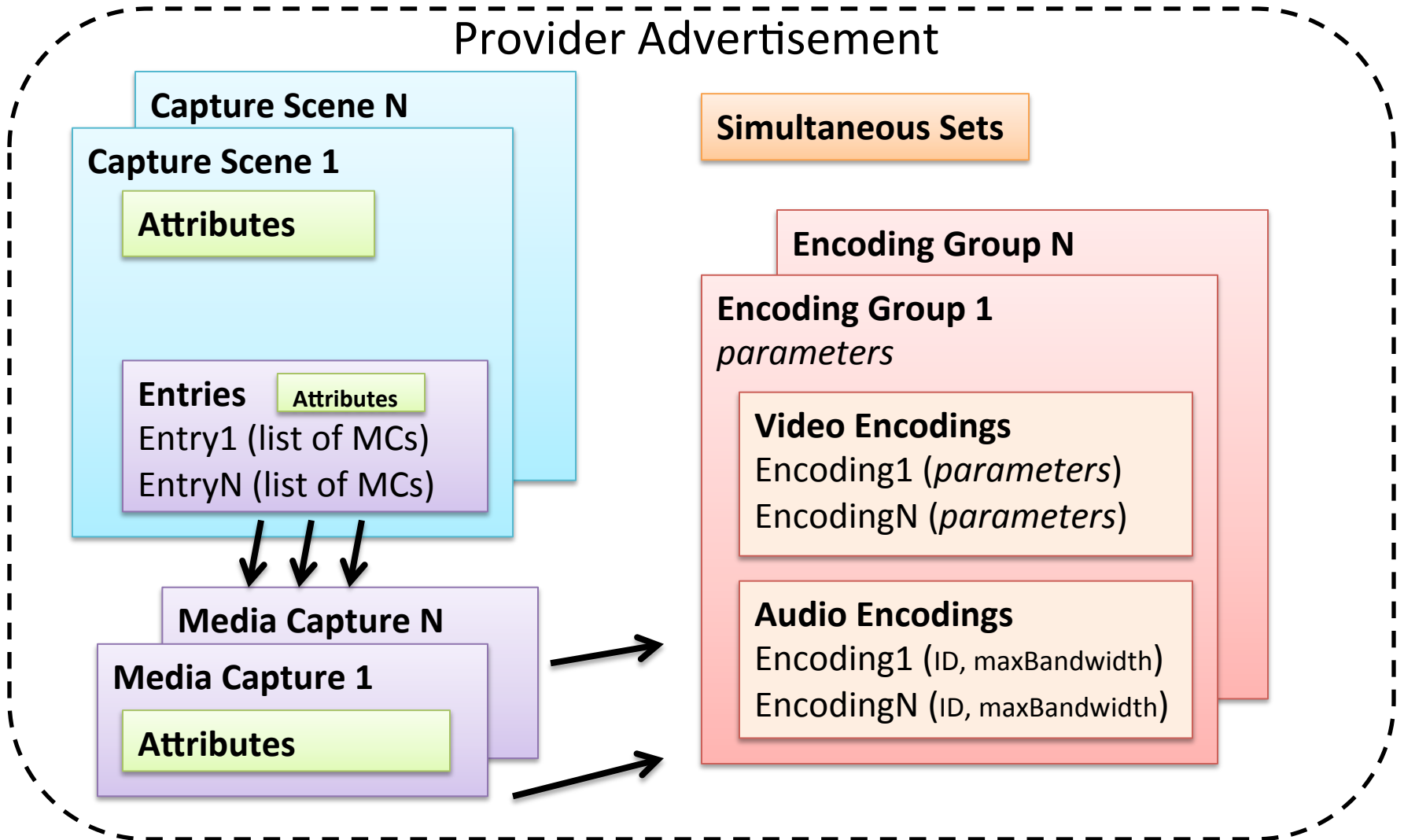
# Framework structure – Captures



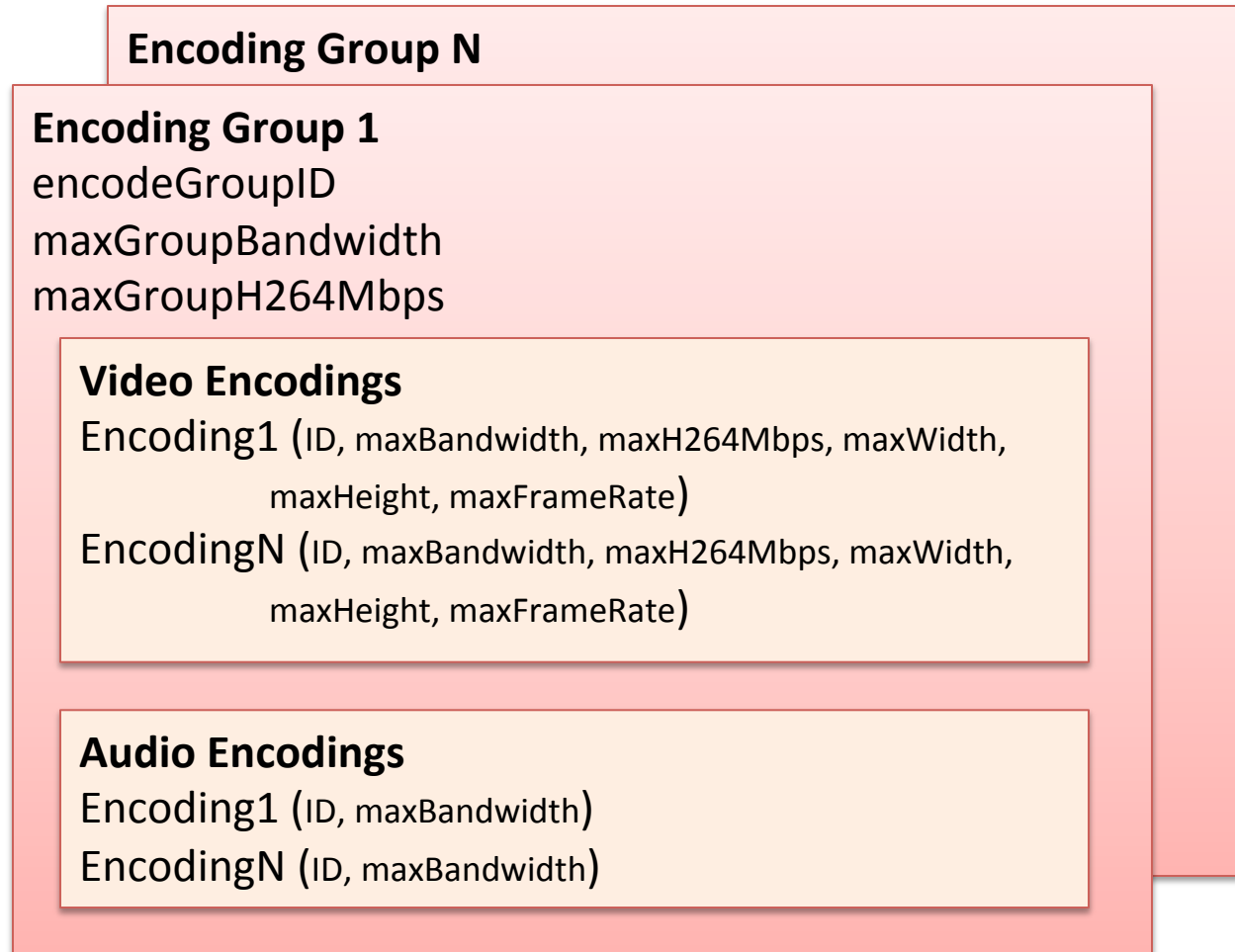
Note: each N can have a different value, they are not all the same

# Framework Structure Summary

## Provider Advertisement



# Framework Structure – Encoding Groups



# Ticket #8

## Differentiating capture scenes

- Adding a text **description** attribute to a capture scene
- Discussion on list about mandating all (or none) captures in a scene use coordinates. All or nothing.
- Discussion on list about adding a **content** attribute to a capture scene. Mandate that all media captures within a scene use the same value for **content** attribute (main, slides, ...)?

# Ticket #10

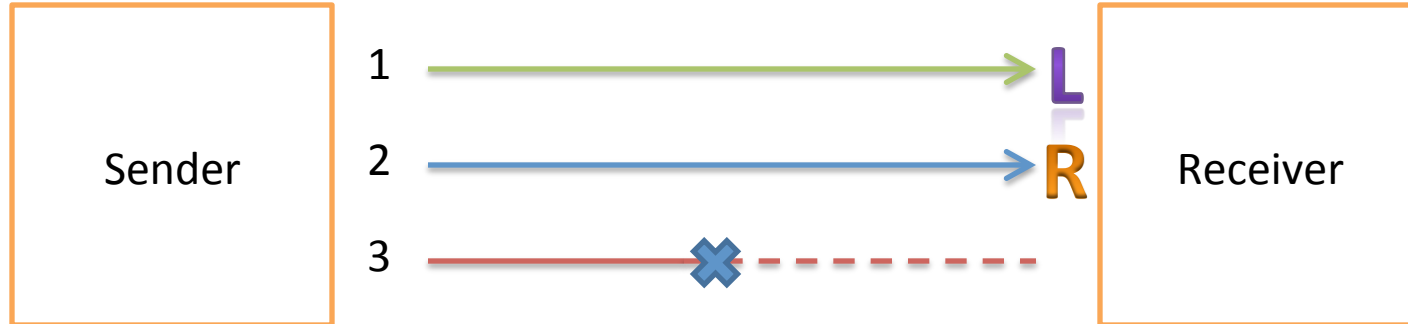
## Sufficient information for consumer?

- The provider can offer multiple capture scene entries, with different number of captures, to accommodate different consumers. Email discussion is about when provider doesn't do that.
  - mandate the provider to constrain itself to number of captures in a scene the consumer says it can handle?
- For multiple capture scenes, should provider give a “priority” attribute so consumer can automatically pick one?

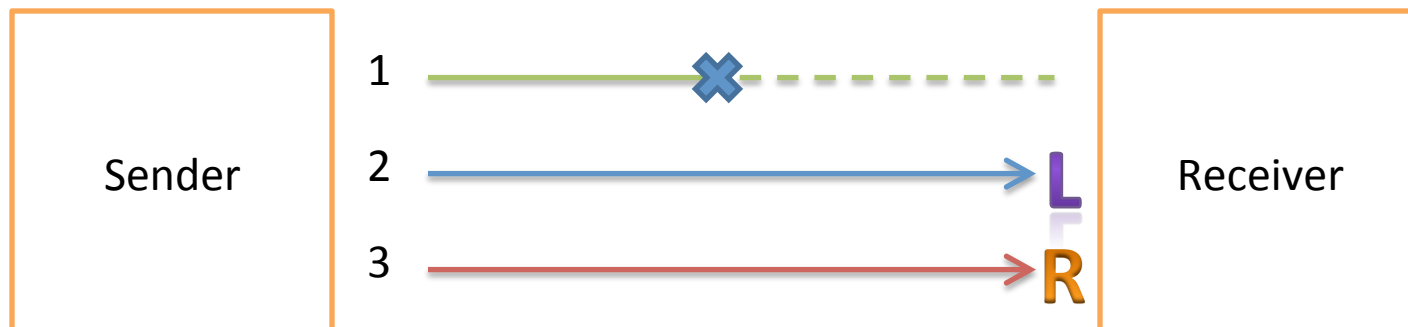


# Switched capture example

- Receiver, getting two switched captures (Left and Right).
- Initially, source 1 is sent for the Left switched capture, source 2 for the Right switched capture.



- After a change, source 2 is sent for the Left switched capture, source 3 for the Right switched capture.
- Notice that source 2 was Right, but is now Left. (see notes)



# A.1 video layout arrangements

- Can consumer request the provider to provide a certain type of layout arrangement or perform a certain composition algorithm?
- Proposal – No need for this in first version of framework, so remove this issue.

# A.2 and A.3 source selection

- Closely related to closed Ticket #1
- Proposal – remove these issues, since Ticket #1 says source selection is out of scope for now.

# A.4 – requesting many streams from MCU

- Proposal – remove this issue from the framework document
- Continue discussion with draft:
  - draft-hansen-clue-consumer-layout-00

## A.5 VAD audio tagging

- Proposal – remove this issue from the framework document
- Continue discussion with draft:
  - draft-romanow-clue-audio-rendering-tag-00