

# Optimizing NAT and Firewall Keepalives using PCP

draft-ietf-pcp-optimize-keepalives-03

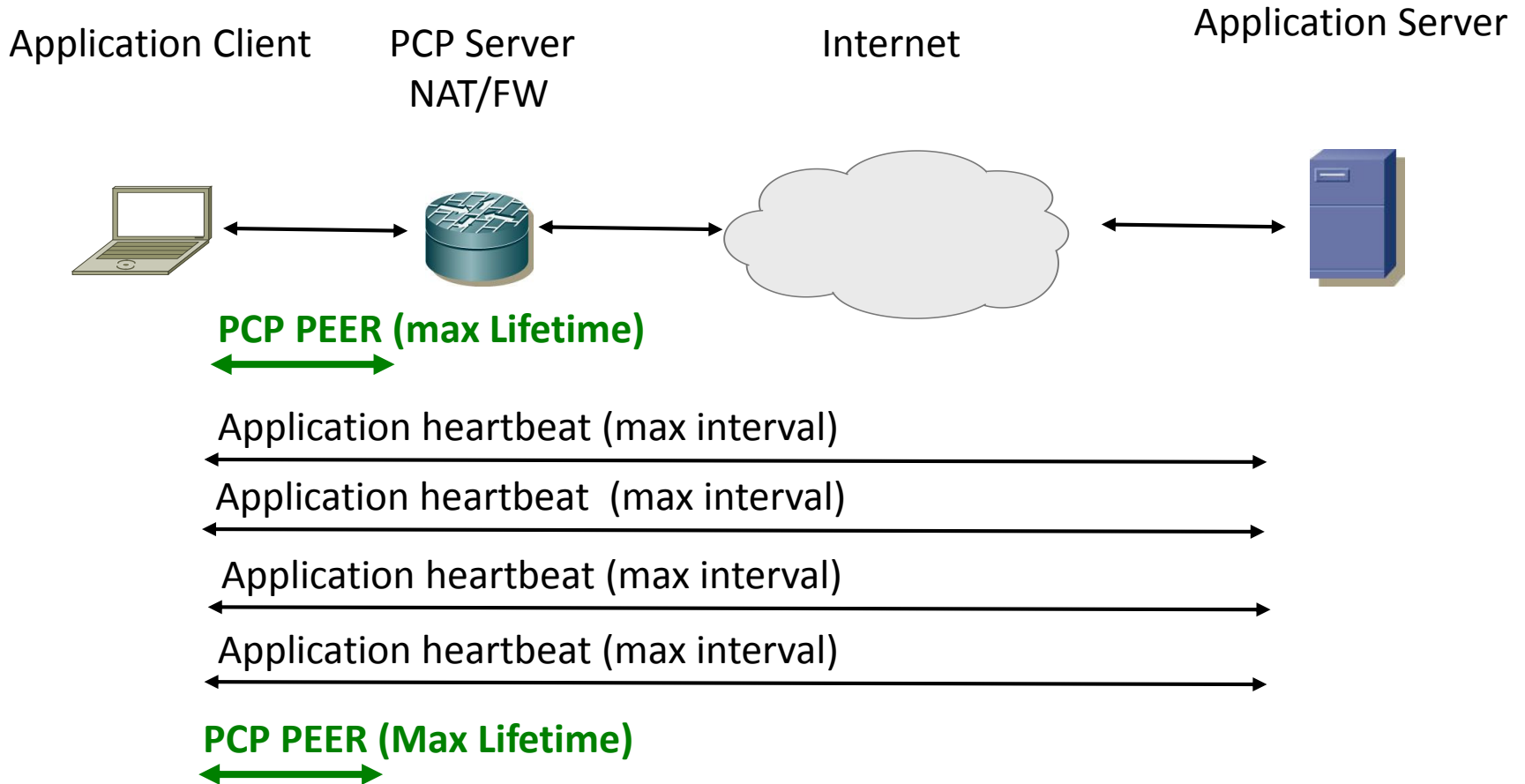
**August 2014**

**T.Reddy, M.Isomaki, D.Wing, P.Patil**

# Updates

Addressed all comments received on the mailer.

# Keep-alive Optimization



- Synchronize PCP and application messages to save power

# Next Update

- Add an example to illustrate savings due to PCP (with PCP proxy included)

**Ready for WGLC?**