

(U)SIM based PCP Authentication

draft-chen-pcp-authentication-sim-00

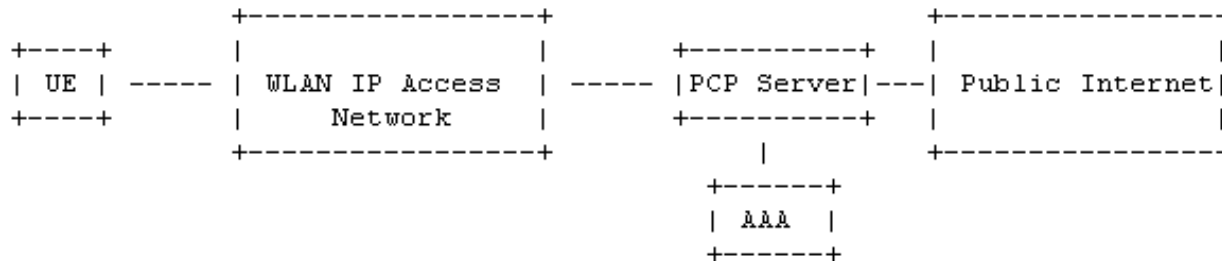
Gang Chen
China Mobile

Overview

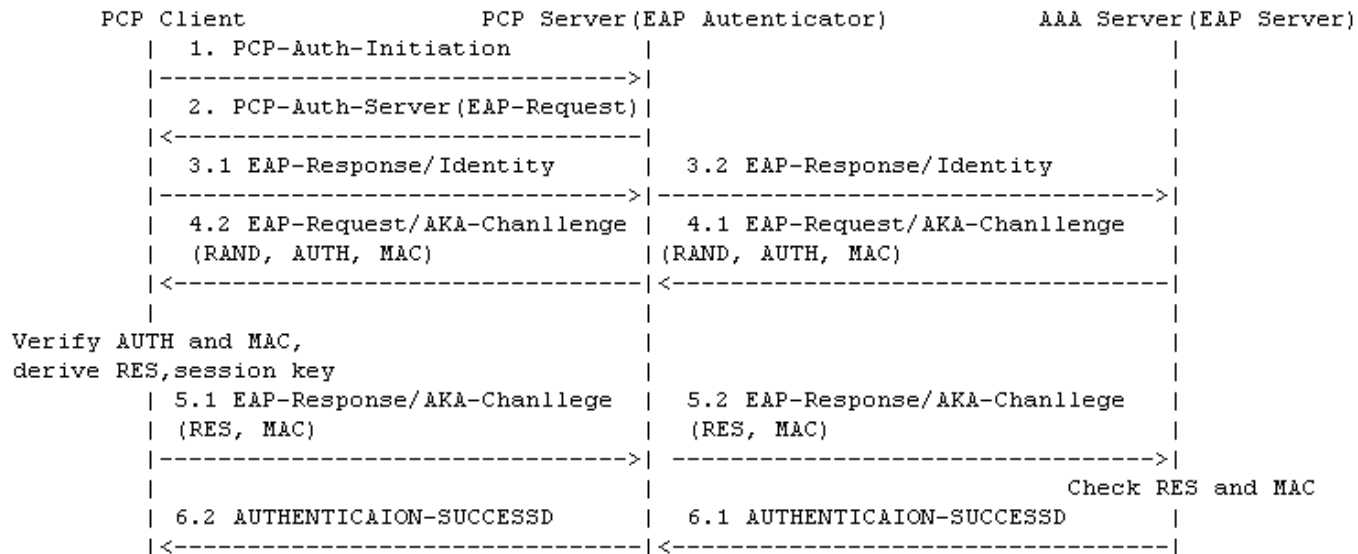
- The document details PCP authentication considerations based on (U)SIM support.
- With (U)SIM support, PCP authentication could leverage the credentials stored in (U)SIM
- The authentication procedures in EAP and GBA framework have been described

EAP Framework

The scenario: WLAN Access with EAP Support

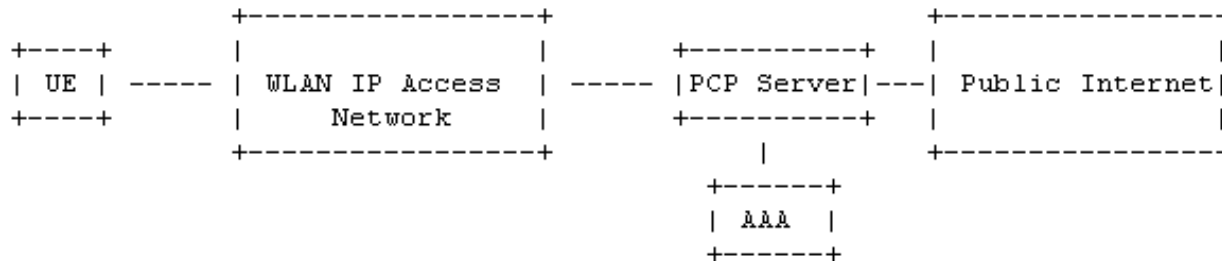


PCP authentication process with EAP-AKA/EAP-AKA'

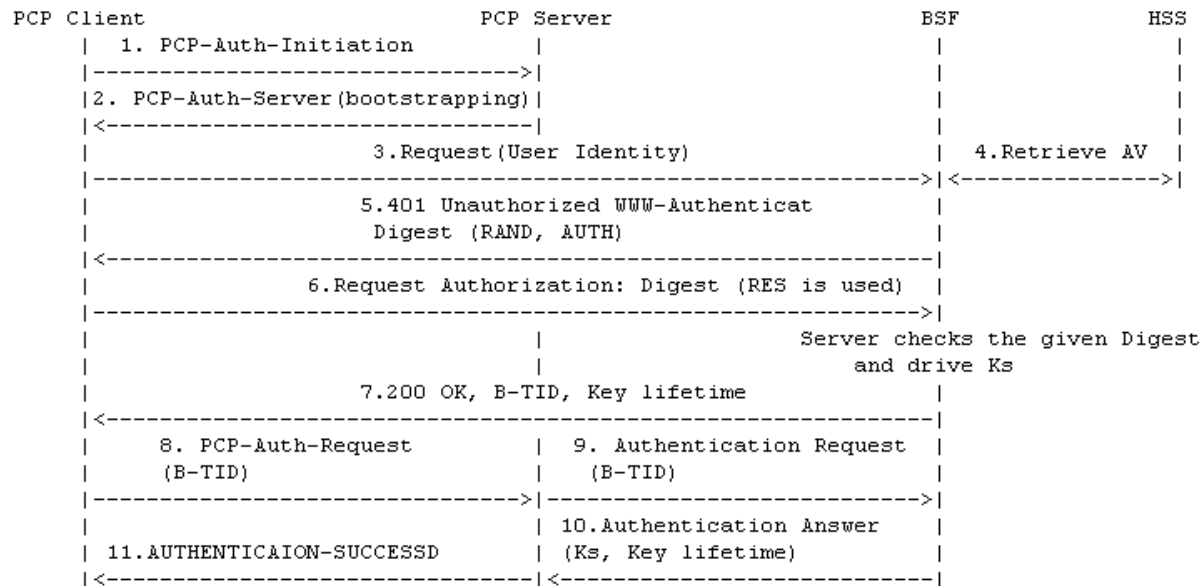


GBA Framework

The scenario: 3GPP Access with GBA Support



PCP authentication process in the GBA

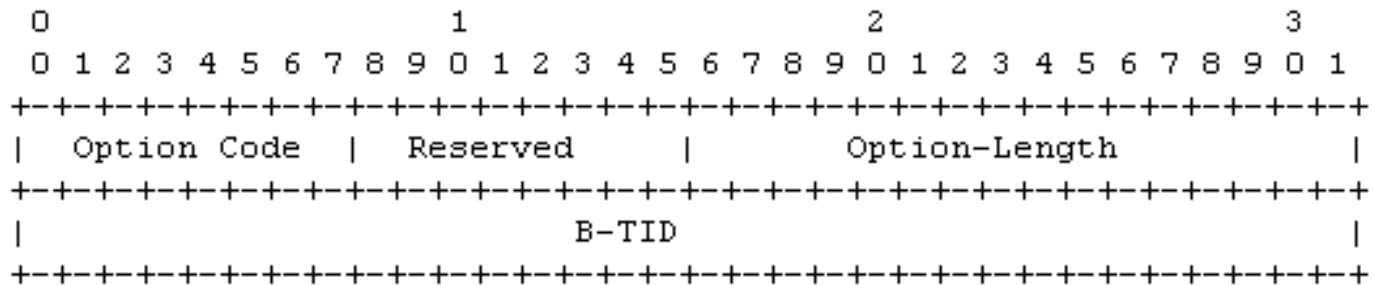


Proposals

One result code is required:

TBD BOOTSTRAPPING-INITIATION

B-TID option:



Comments

- Regarding the GBA framework, what is the need for this mechanism when EAP-SIM can be used ?
 - EAP is out of 3GPP-access security architecture [TS 33.401], which describes the security framework of 3GPP access
 - EAP is normally used at non-3GPP access [TS 33.402]
- It deviates from REQ-6 of fate sharing <http://tools.ietf.org/html/draft-reddy-pcp-auth-req-04>

REQ-6: To ease troubleshooting and ensure fate sharing, PCP authentication and PCP messages MUST be multiplexed over the same port.

- There is no request to use different port for PCP authentication and PCP message. This document is compliant with draft-ietf-pcp-authentication

What's Next?

- Is it valid statement to wg?
- Should we continue the work within wg?

Comments/Questions?