

I2RS Primitives

Dean Bogdanovic

Juniper Networks

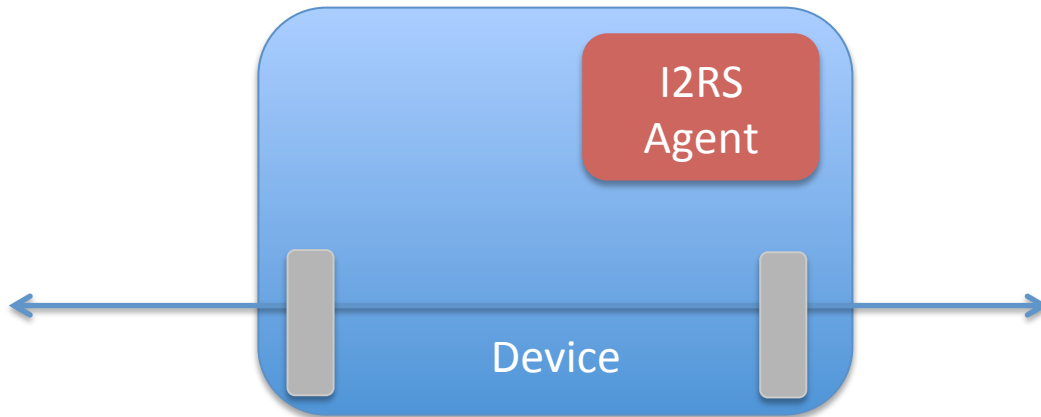
I2RS interim meeting Feb 5th, 2015

Use case

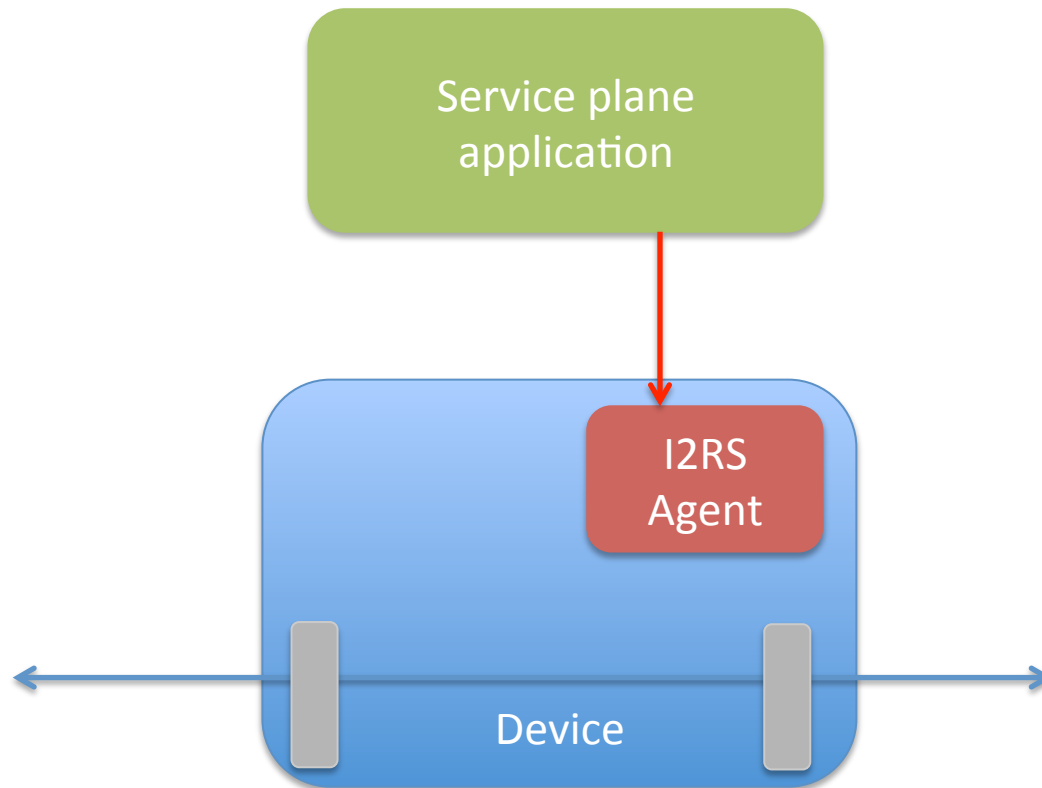
Service plane
application

I2RS
Agent

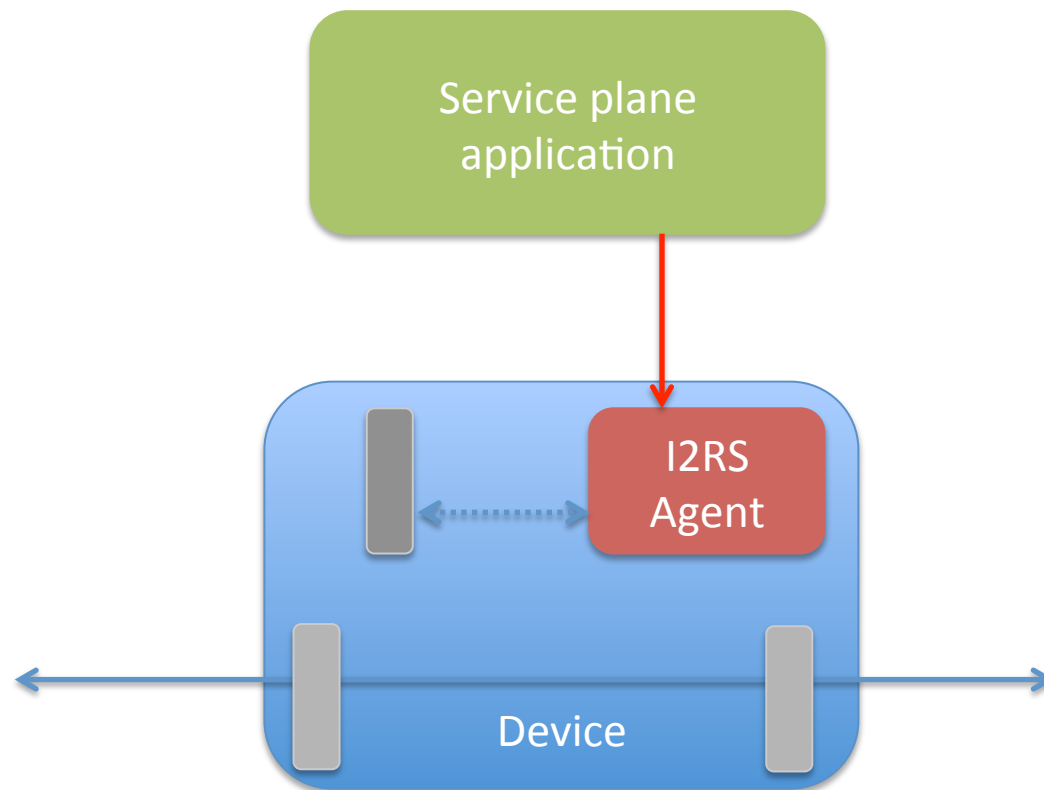
Device



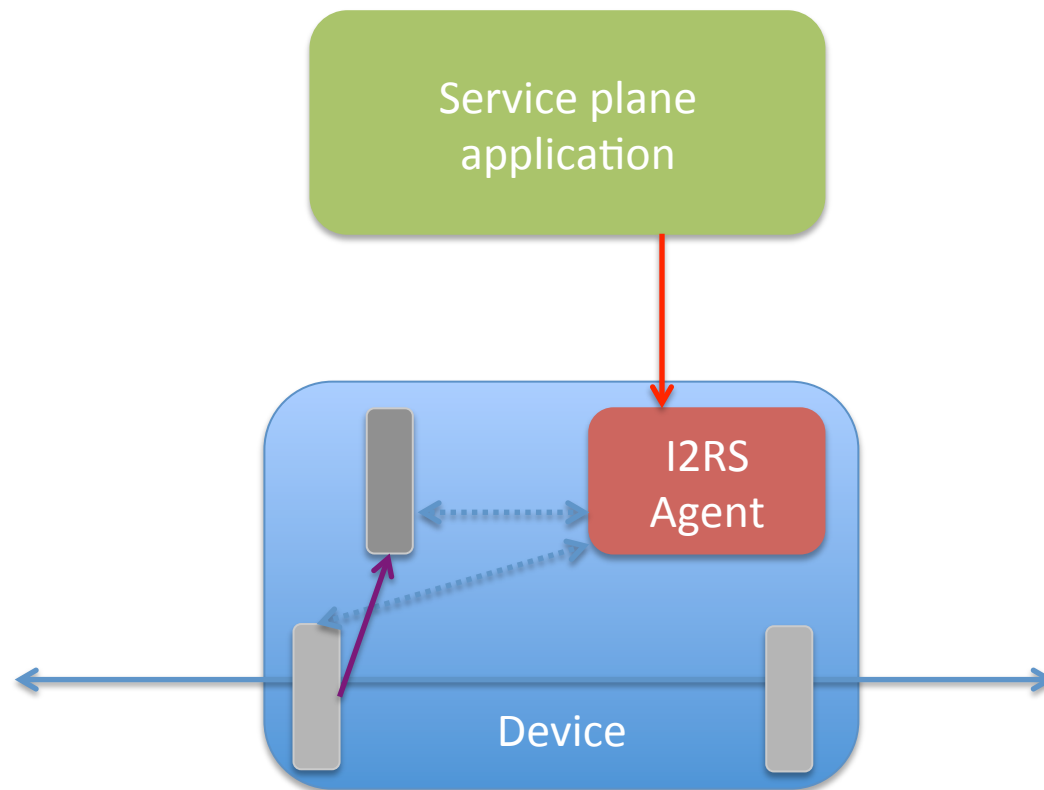
Use case



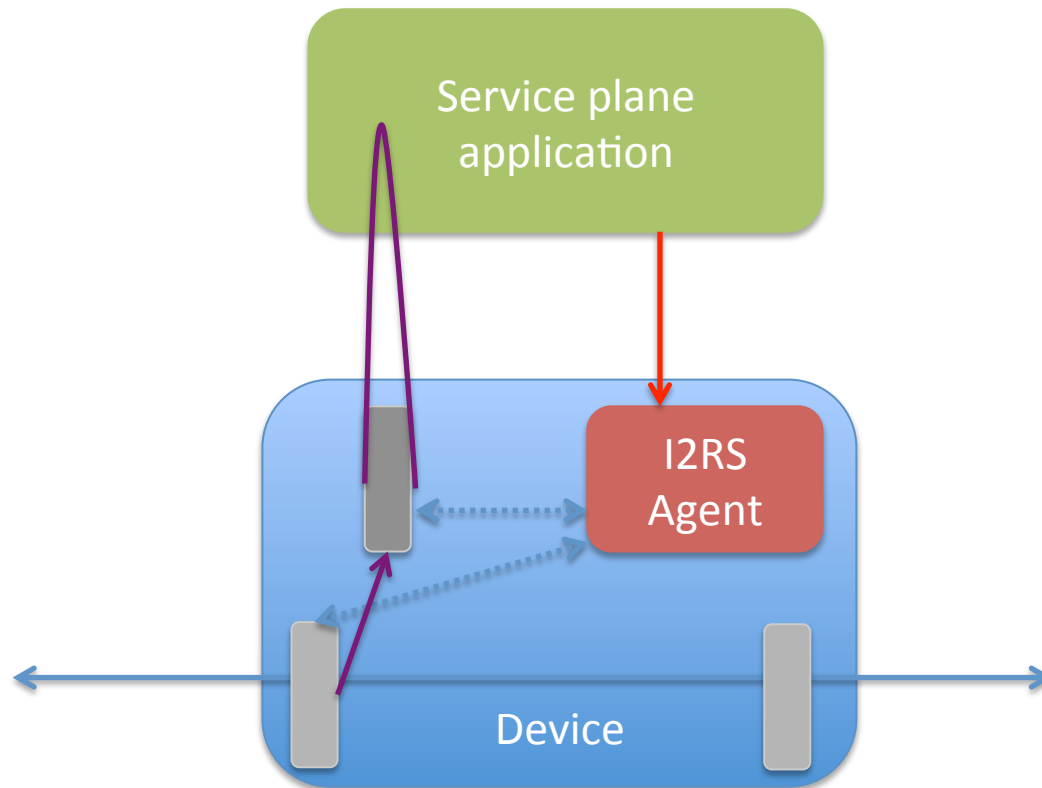
Use case



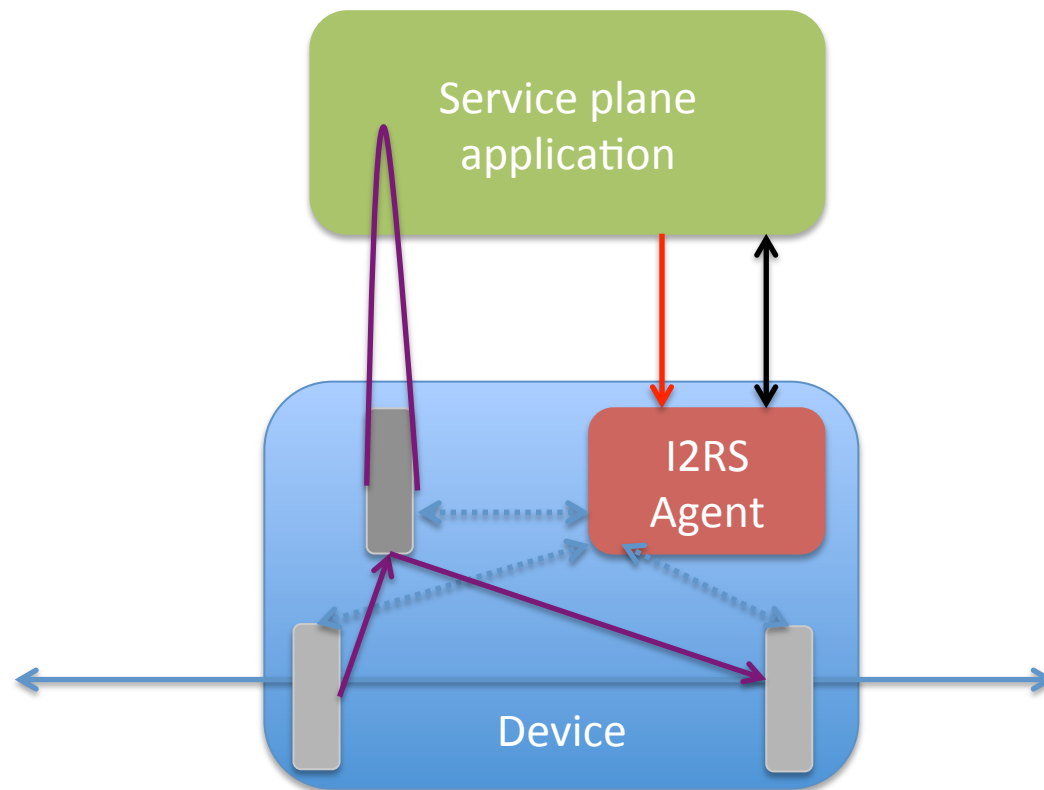
Use case



Use case



Use case



Basic networking concepts

- When writing network applications following elements are used most of the time
 - Interfaces
 - Can represent host, subscriber, application
 - Routing
 - Filtering
 - Class of Service
 - Define traffic forwarding behavior

Existing models

- [RFC7223](#)
 - Defines filter model that is easily extendable
- [routing model](#)
 - Routes
 - Routing tables
 - Routing instances
- [filtering model](#)
 - easily extendable filter model
- [diff serve draft](#)
 - Early work, but it defines a very extendable policy model for CoS

What do we miss from I2RS perspective?

- I2RS as interface between
 - Service plane
 - Control plane
 - Data plane
- Notification mechanism between planes

Use case

